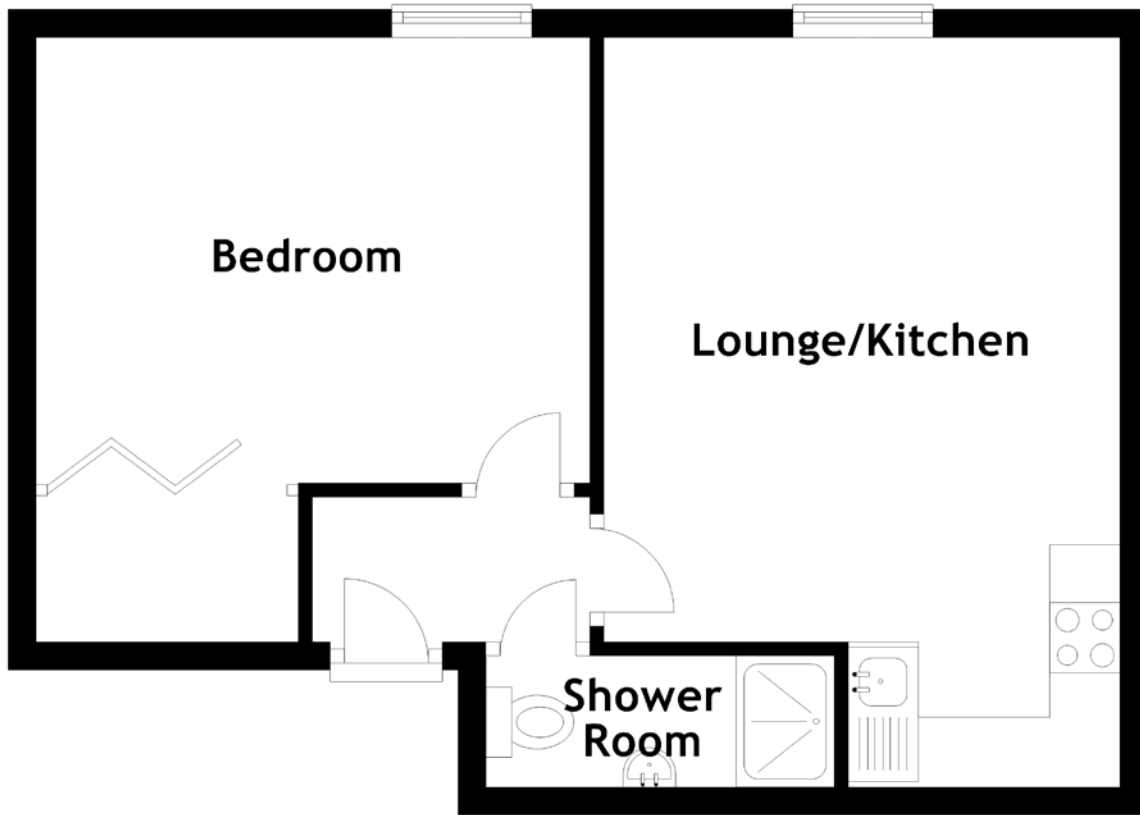


FLOOR PLAN, DIMENSIONS & MAP



Approximate Dimensions (Taken from the widest point)

Lounge/Kitchen	5.35m (17'7") x 3.68m (12'1")	Gross internal floor area (m ²): 39m ²
Bedroom	3.95m (13') x 3.18m (10'5")	
Shower Room	2.48m (8'2") x 0.86m (2'10")	EPC Rating: D

