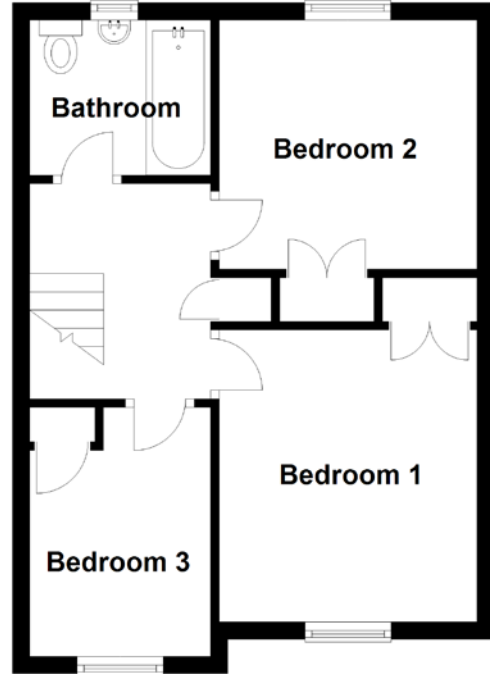
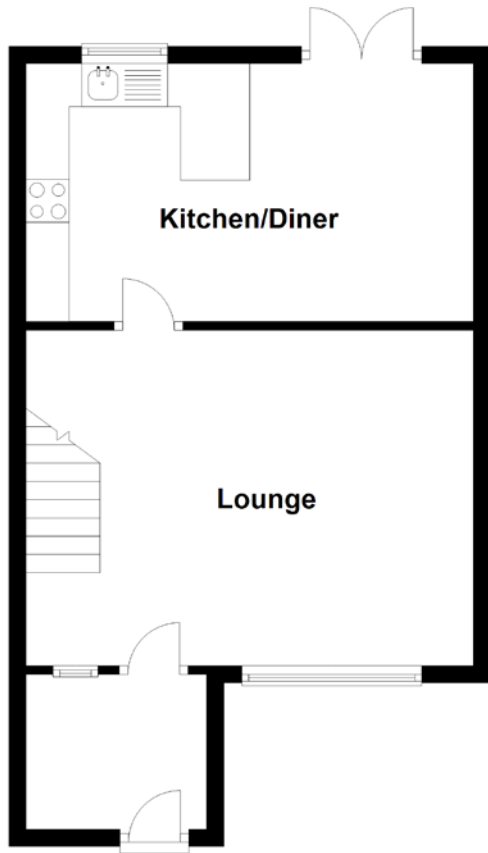


FLOOR PLAN, DIMENSIONS & MAP



Approximate Dimensions
(Taken from the widest point)

Lounge	5.20m (17'1") x 3.90m (12'10")
Kitchen/Diner	5.20m (17'1") x 3.00m (9'10")
Bathroom	2.10m (6'11") x 1.80m (5'11")

Bedroom 1	3.40m (11'2") x 3.00m (9'10")
Bedroom 2	3.00m (9'10") x 2.90m (9'6")
Bedroom 3	2.90m (9'6") x 2.10m (6'11")

Gross internal floor area (m²): 77m²
EPC Rating: D

