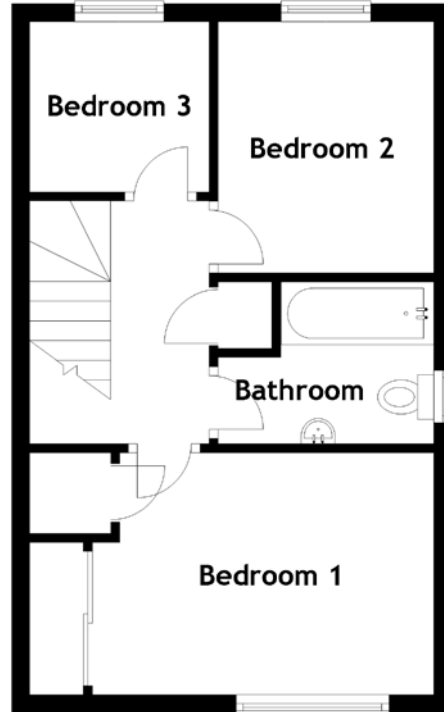
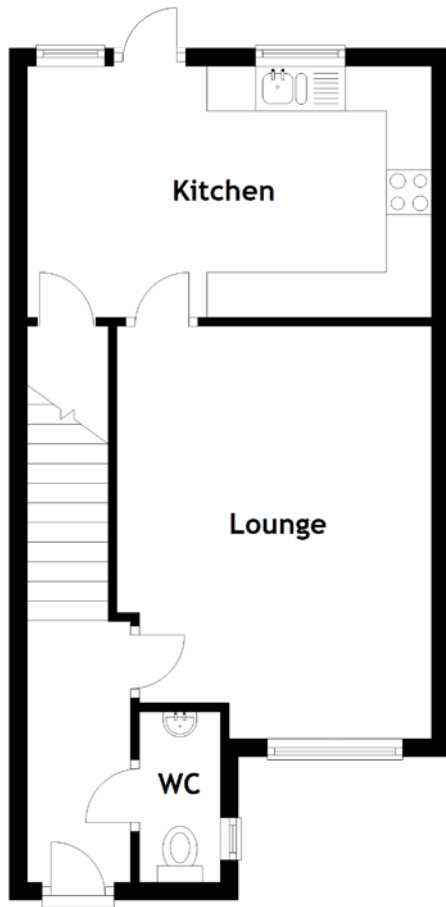


FLOOR PLAN, DIMENSIONS & MAP



Approximate Dimensions (Taken from the widest point)

| | |
|----------|-------------------------------|
| Lounge | 4.60m (15'1") x 3.50m (11'6") |
| Kitchen | 4.50m (14'9") x 2.80m (9'2") |
| WC | 1.90m (6'3") x 0.90m (2'11") |
| Bathroom | 2.40m (7'11") x 1.80m (5'11") |

| | |
|-----------|-------------------------------|
| Bedroom 1 | 3.80m (12'6") x 2.70m (8'10") |
| Bedroom 2 | 2.80m (9'2") x 2.40m (7'11") |
| Bedroom 3 | 2.00m (6'7") x 1.90m (6'3") |

Gross internal floor area (m²): 92m²
EPC Rating: B

