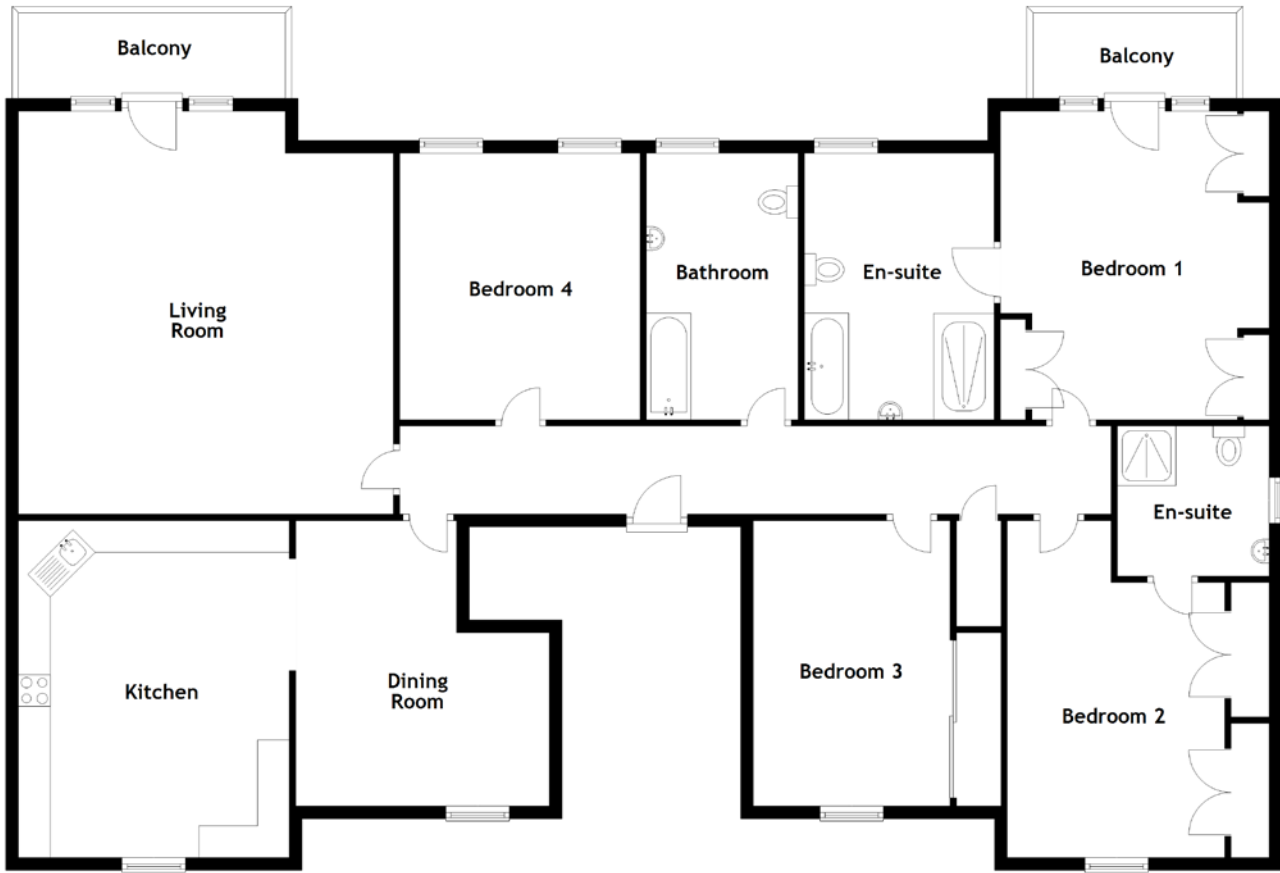


FLOOR PLAN, DIMENSIONS & MAP



Approximate Dimensions
(Taken from the widest point)

Living Room	5.91m (19'5") x 5.69m (18'8")
Kitchen	5.31m (17'5") x 4.27m (14')
Dining Room	4.50m (14'9") x 4.00m (13'1")
Bathroom	4.20m (13'9") x 2.39m (7'10")
Bedroom 1	4.86m (15'11") x 4.24m (13'11")

En-suite	4.20m (13'9") x 2.99m (9'10")
Bedroom 2	5.31m (17'5") x 3.43m (11'3")
En-suite	2.39m (7'10") x 2.37m (7'9")
Bedroom 3	4.50m (14'9") x 3.10m (10'2")
Bedroom 4	4.20m (13'9") x 3.79m (12'5")

Gross internal floor area (m²): 201m²
EPC Rating: C

