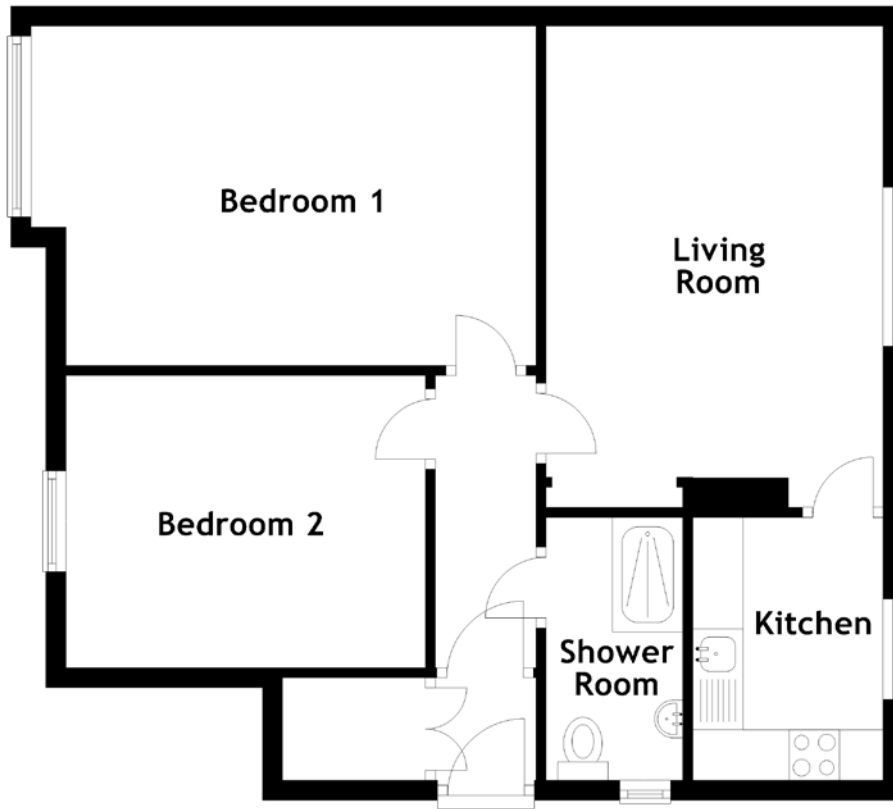


FLOOR PLAN, DIMENSIONS & MAP



Approximate Dimensions (Taken from the widest point)

Living Room 4.78m (15'8") x 3.35m (11')
 Kitchen 2.61m (8'7") x 1.89m (6'2")
 Shower Room 2.61m (8'7") x 1.36m (4'6")

Bedroom 1 5.02m (16'6") x 3.37m (11'1")
 Bedroom 2 3.57m (11'9") x 2.90m (9'6")

Gross internal floor area (m²): 61m²
 EPC Rating: C

