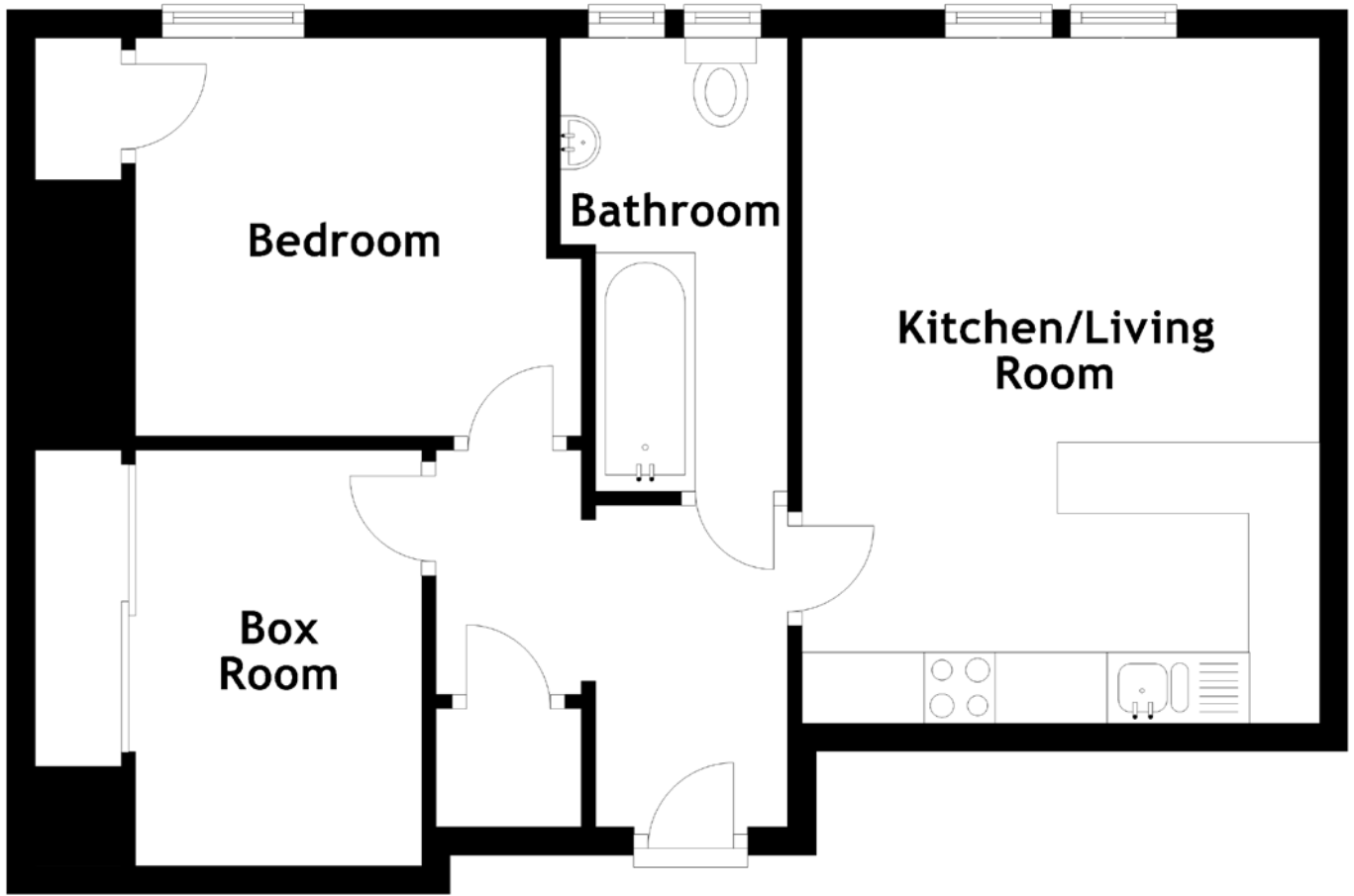


FLOOR PLAN, DIMENSIONS & MAP



Approximate Dimensions
(Taken from the widest point)

Kitchen/Living Room
Bedroom

4.82m (15'10") x 3.63m (11'11")
3.13m (10'3") x 2.80m (9'2")

Box Room
Bathroom

2.92m (9'7") x 2.01m (6'7")
3.19m (10'6") x 1.35m (4'5")

Gross internal floor area (m²): 47m²
EPC Rating: C

