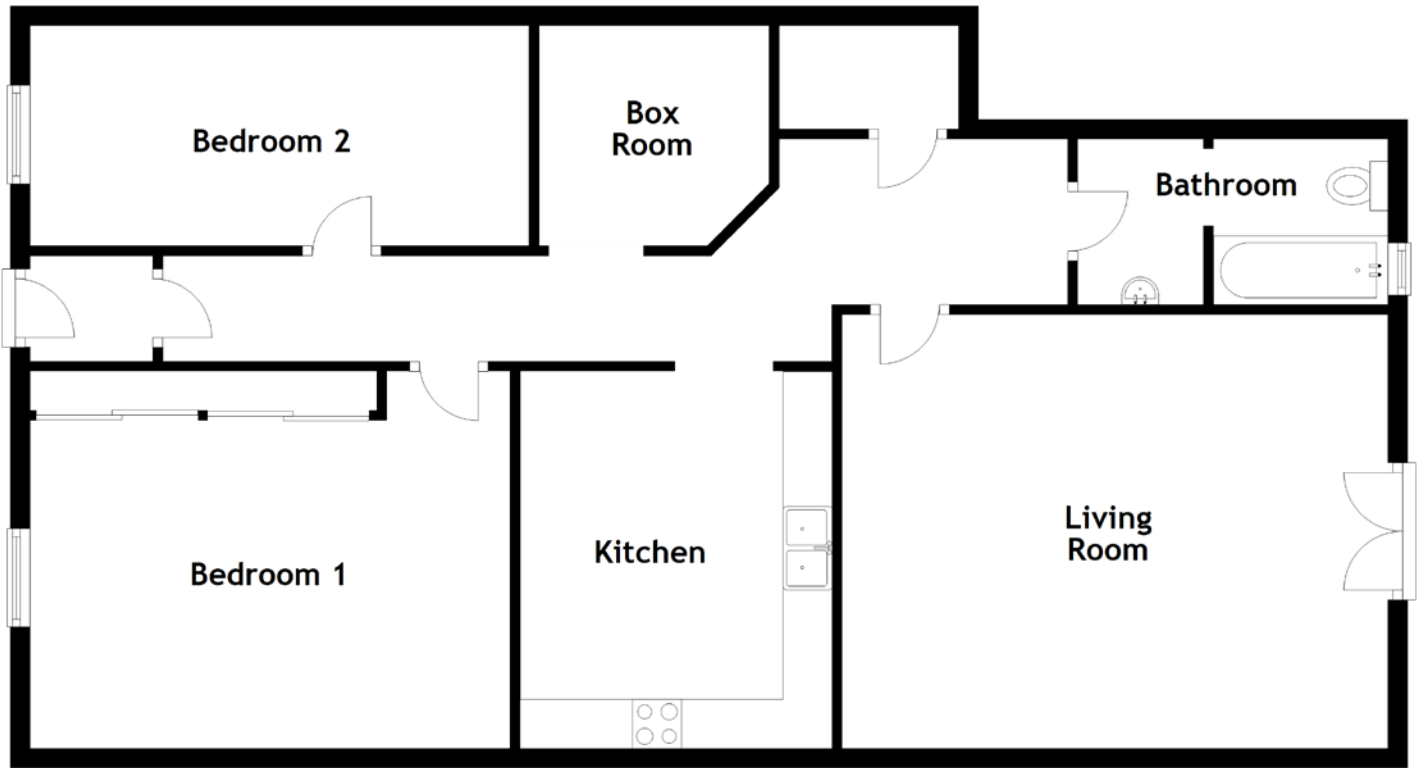


FLOOR PLAN, DIMENSIONS & MAP



Approximate Dimensions
(Taken from the widest point)

Living Room 5.56m (18'3") x 4.42m (14'6")
 Kitchen 3.84m (12'7") x 3.18m (10'5")
 Bedroom 1 4.89m (16'1") x 3.84m (12'7")

Bedroom 2 5.08m (16'8") x 2.24m (7'4")
 Box Room 2.35m (7'9") x 2.24m (7'4")
 Bathroom 3.16m (10'4") x 1.69m (5'6")

Gross internal floor area (m²): 102m²
 EPC Rating: C

