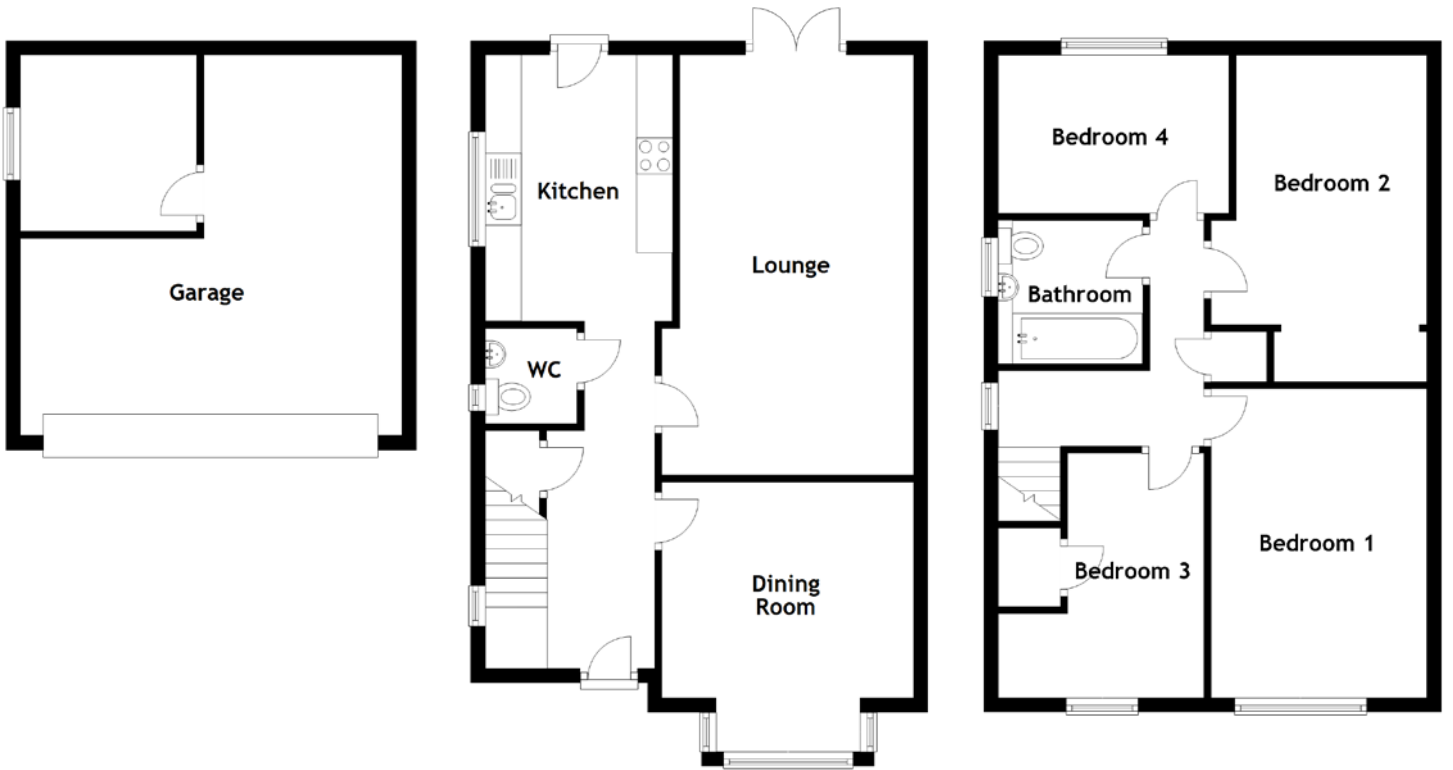


# FLOOR PLAN, DIMENSIONS & MAP



Approximate Dimensions  
(Taken from the widest point)

Lounge	5.85m (19'2") x 3.50m (11'6")
Kitchen	3.70m (12'2") x 2.60m (8'6")
Dining Room	3.75m (12'4") x 3.50m (11'6")
Bathroom	2.00m (6'7") x 2.00m (6'7")
Bedroom 1	4.30m (14'1") x 3.00m (9'10")
Bedroom 2	4.00m (13'1") x 3.10m (10'2")

Bedroom 3	3.40m (11'2") x 2.75m (9')
Bedroom 4	3.20m (10'6") x 2.20m (7'3")
Garage	5.30m (17'5") x 5.30m (17'5")

Gross internal floor area (m<sup>2</sup>): 100m<sup>2</sup>  
EPC Rating: D

Extras: Floor coverings, light fittings, blinds, window dressings and integrated appliances.

