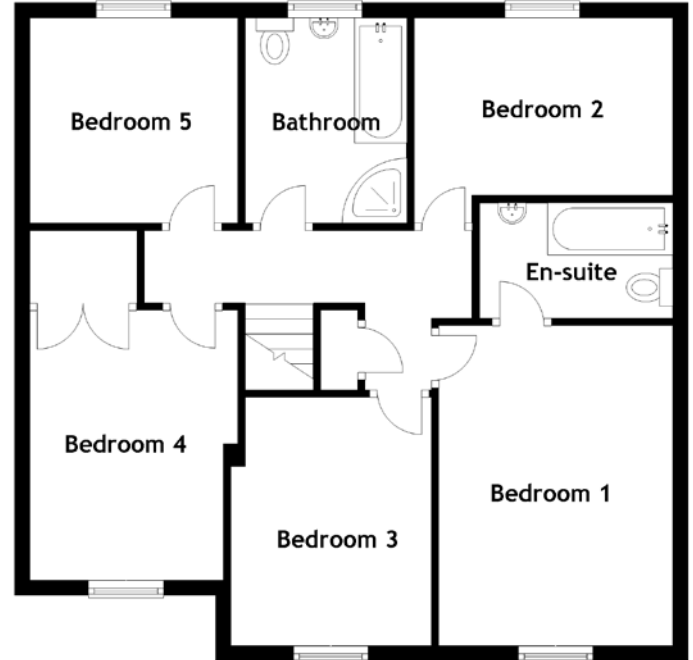
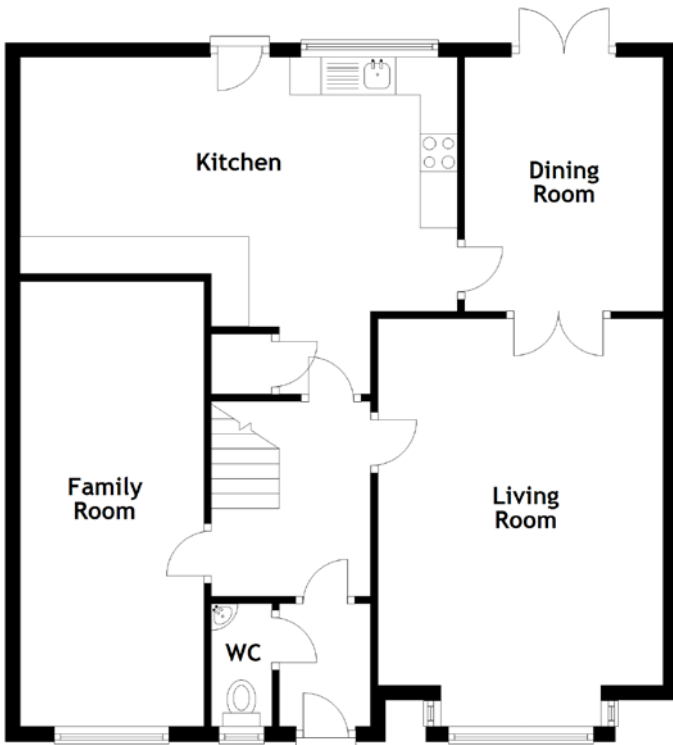


FLOOR PLAN, DIMENSIONS & MAP



Approximate Dimensions
(Taken from the widest point)

Living Room	5.47m (17'11") x 3.82m (12'6")
Dining Room	3.40m (11'2") x 2.66m (8'9")
Family Room	5.97m (19'7") x 2.46m (8'1")
Kitchen	5.86m (19'3") x 3.40m (11'2")
WC	1.64m (5'5") x 0.81m (2'8")
Bathroom	2.75m (9') x 2.17m (7'1")

Bedroom 1	4.29m (14'1") x 3.14m (10'3")
En-suite	2.59m (8'6") x 1.55m (5'1")
Bedroom 2	3.60m (11'10") x 2.75m (9')
Bedroom 3	3.33m (10'11") x 2.69m (8'10")
Bedroom 4	3.62m (11'10") x 2.79m (9'2")
Bedroom 5	2.79m (9'2") x 2.75m (9')

Gross internal floor area (m²): 150m²
EPC Rating: C

