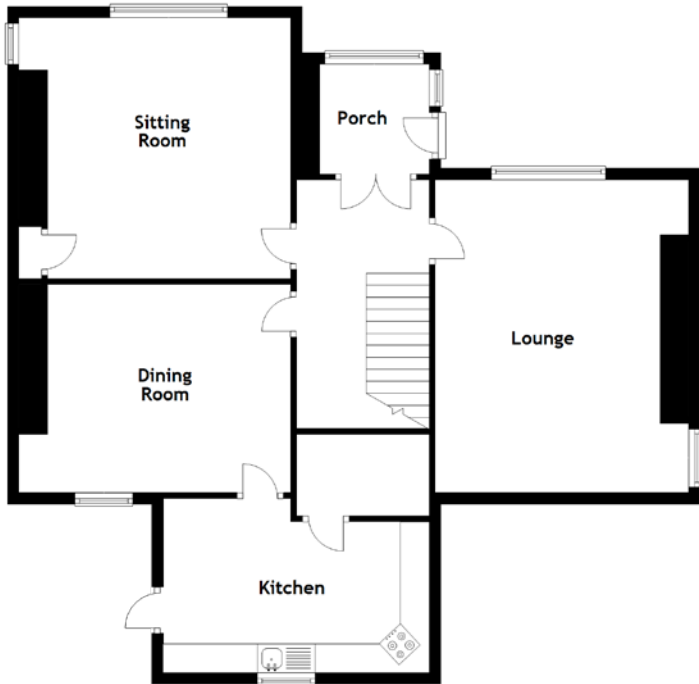


# FLOOR PLAN, DIMENSIONS & MAP



Approximate Dimensions  
(Taken from the widest point)

|              |                                |
|--------------|--------------------------------|
| Porch        | 1.90m (6'3") x 1.90m (6'3")    |
| Lounge       | 5.40m (17'9") x 3.90m (12'10") |
| Sitting Room | 4.50m (14'9") x 4.20m (13'9")  |
| Dining Room  | 4.20m (13'9") x 3.60m (11'10") |
| Kitchen      | 4.60m (15'1") x 3.00m (9'10")  |

|           |                                |
|-----------|--------------------------------|
| Bedroom 1 | 5.40m (17'9") x 3.90m (12'10") |
| Bedroom 2 | 4.30m (14'1") x 4.20m (13'9")  |
| Bedroom 3 | 4.30m (14'1") x 3.60m (11'10") |
| Bedroom 4 | 3.00m (9'10") x 1.90m (6'3")   |
| Bathroom  | 2.50m (8'2") x 1.90m (6'3")    |

Gross internal floor area (m<sup>2</sup>): 173m<sup>2</sup>  
EPC Rating: G

