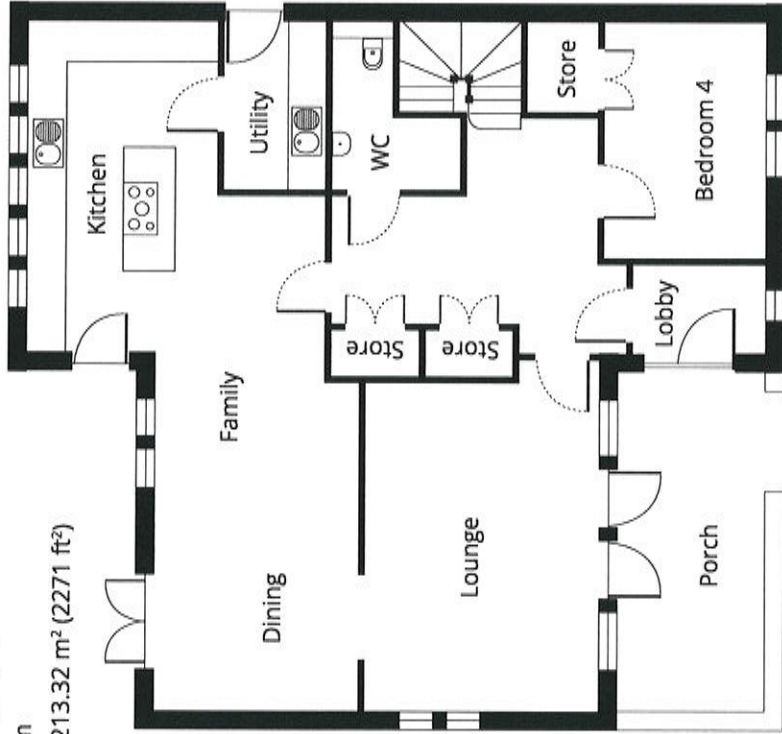


The Haliburton (HTE)

Plots: 12, 13, 14, 15

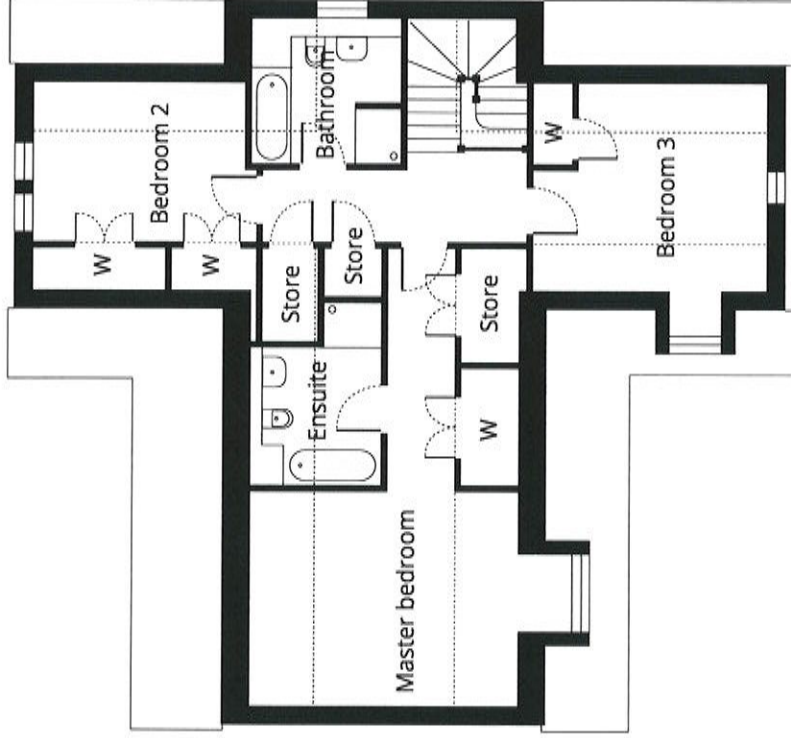
4 Bedroom

Total GIA 213.32 m² (2271 ft²)



Ground Floor

Room	Metric	Imperial
Kitchen	5.74 x 5.14	18'10" x 16'10"
Family	3.10 x 3.55	10'2" x 11'8"
Dining	3.20 x 3.55	10'6" x 11'8"
Lounge	5.74 x 4.08	18'10" x 13'5"
Bedroom 4	4.10 x 2.79	13'5" x 9'2"
Utility	2.90 x 1.71	9'6" x 5'7"
WC	2.64 x 2.07	8'8" x 6'9"



First Floor

Room	Metric	Imperial
Master Bedroom	3.78 x 5.86	12'5" x 19'3"
Ensuite	3.23 x 2.11	10'7" x 6'11"
Bedroom 2	2.77 x 3.57	9'1" x 11'9"
Bedroom 3	3.57 x 4.25	11'9" x 13'11"
Bathroom	2.47 x 2.61	8'1" x 8'7"

Contact the selling agent Simpson & Marwick
 Call: 01620 892000
 Email: castlemains@simpsonmarwick.com

