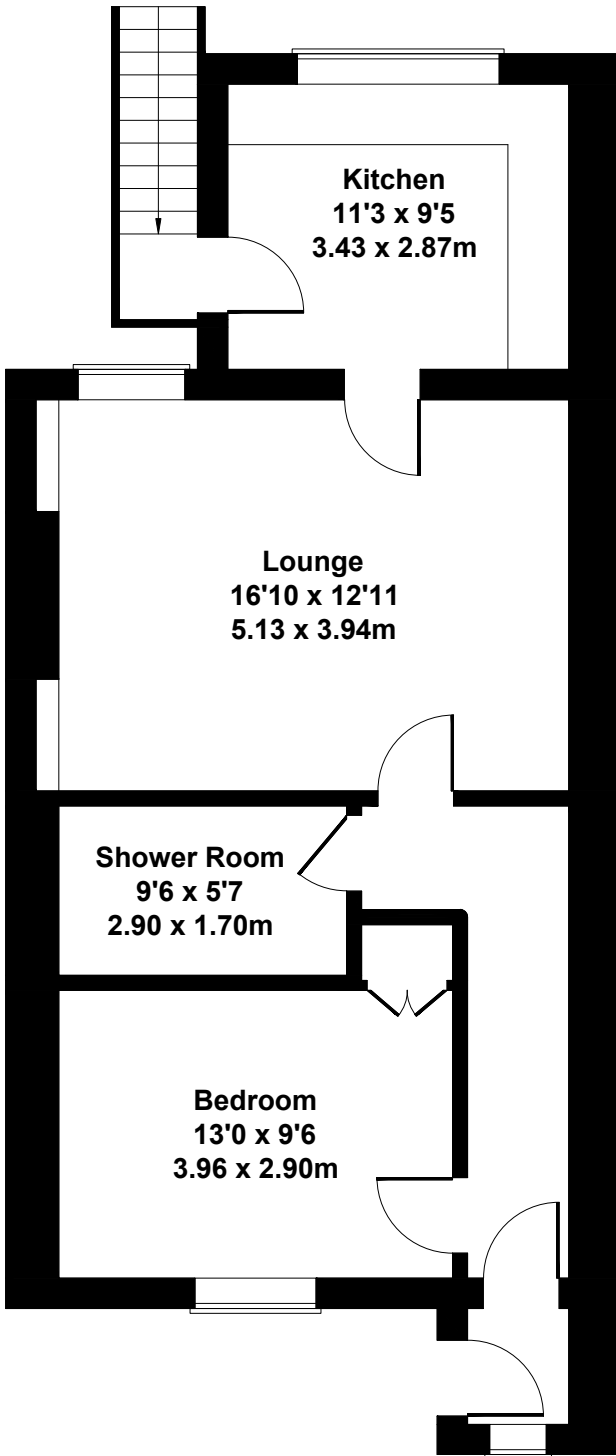


11 Lintmill Terrace, Neilston, Glasgow G78 3LH.

Approximate Gross Internal Area

621 sq ft - 58 sq m



SKETCH PLAN FOR ILLUSTRATIVE PURPOSES ONLY

All measurements walls, doors, windows, fittings and appliances, their sizes and locations, are approximate only. They cannot be regarded as being a representation by the seller, nor their agent.