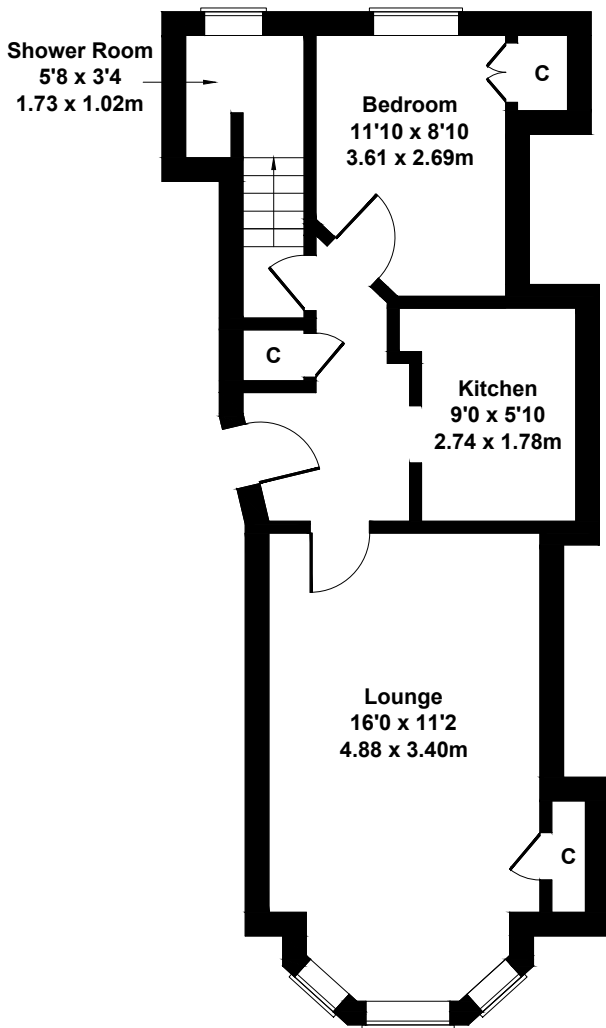


Flat 0-2, 9 Kings Park Road, Kings Park, Glasgow

Approximate Gross Internal Area

498 sq ft - 46 sq m



SKETCH PLAN FOR ILLUSTRATIVE PURPOSES ONLY

All measurements walls, doors, windows, fittings and appliances, their sizes and locations, are approximate only. They cannot be regarded as being a representation by the seller, nor their agent.