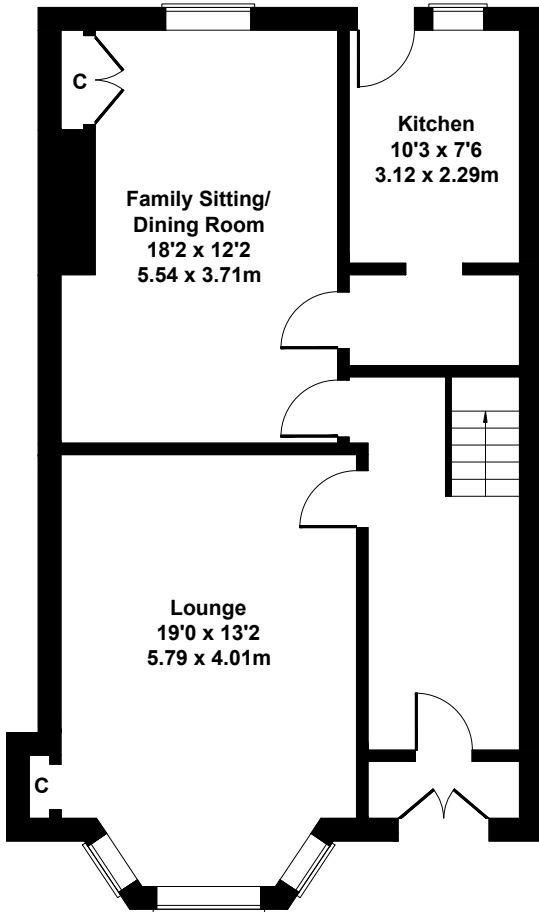


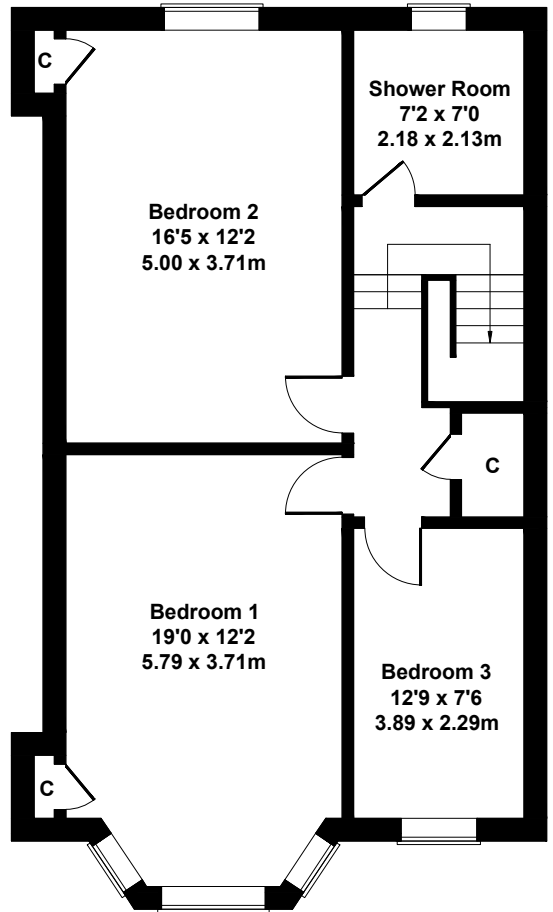
# 29 Second Avenue, Kings Park, Glasgow G44 4TD

Approximate Gross Internal Area

1457 sq ft - 135 sq m



**GROUND FLOOR**



**FIRST FLOOR**

## SKETCH PLAN FOR ILLUSTRATIVE PURPOSES ONLY

All measurements walls, doors, windows, fittings and appliances, their sizes and locations, are approximate only. They cannot be regarded as being a representation by the seller, nor their agent.