

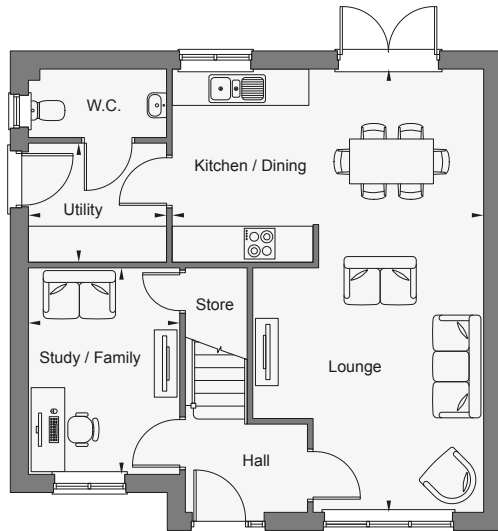
# THE RUM

FOXHALL GAIT

Version X – XXth Month 20XX

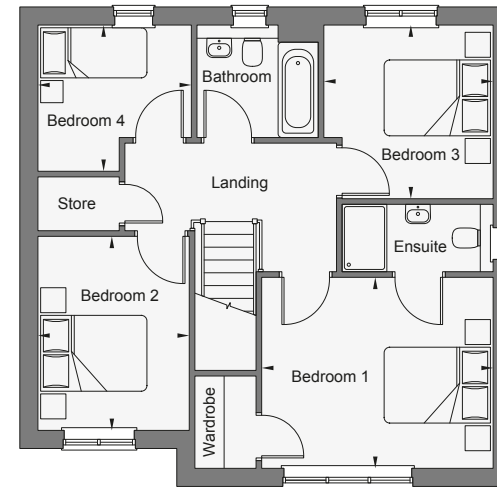
Homes shown: Plots X, X & X

Homes handed: Plots X, X & X



## Ground Floor

Kitchen / Dining / Lounge	5.57m x 7.91m	18'3" x 26'0"
Study / Family	2.74m x 3.68m	9'0" x 12'1"
Utility	2.47m x 2.12m	8'1" x 7'0"



## First Floor

Bedroom 1	4.13m x 3.41m	13'5" x 11'1"
Bedroom 2	2.71m x 3.46m	8'9" x 11'4"
Bedroom 3	3.05m x 3.10m	10'0" x 10'2"
Bedroom 4	2.73m x 2.60m	9'0" x 8'5"