



18 Pinkerton Road, Crail, KY10 3UB

Offers Over £250,000



Spacious 3 Bedroom Detached Bungalow with a conservatory in a SOUGHT-AFTER LOCATION within walking distance of The Fife Coastal Path, Beach and Harbour making this an IDYLLIC LIFESTYLE CHOICE. Local amenities include restaurants/cafes, Shops and Primary School. Accommodation: Hall, sitting room, conservatory, kitchen, 3 bedrooms and a bathroom. DG. GCH. Gardens. Driveway and DETACHED GARAGE. PERSONAL PROPERTY TOUR and LOCATION TOUR available online.



LOCATION

Crail is a charming village in the East Neuk of Fife with several local amenities and has mobile banking facilities, cafes, restaurants, pharmacy and convenience stores. Located 10 miles south of St Andrews, the Home of Golf, its main industries are tourism, fishing and farming. Recreationally there is a park, harbour, golf course and the beautiful Fife Coastal Path for walking and running as well as excellent B roads for cycling and tracks for mountain biking. Education is provided by the local primary school and secondary schooling at Waid Academy Anstruther, which is one of the top performing secondary schools in Fife. Undoubtedly making this one of the most desirable places to live for those seeking the ultimate in lifestyle living.

DIRECTIONS

Please contact agent for further information.

HALL

Access is via a timber door with opaque double-glazed inlets leading into the hallway. Cupboard provides storage space and houses the hot water tank. Hatch provides access to the attic via a fixed metal ladder. Coving. Radiator. Carpeted.

SITTING ROOM

19'8" x 10'11" (6.00m x 3.33m)

Bright sitting room with a double-glazed window to the front. Coving. 2 radiators. Carpeted.

KITCHEN

14'0" x 7'10" (4.28m x 2.39m)

Fitted kitchen comprising: Wall mounted, floor standing units with contrasting worktops and tiled splashbacks. Wall mounted gas central heating condensing combi boiler. Double-glazed window to the side. Radiator. Laminate flooring. Timber door provides access to the rear garden.

BEDROOM 1

11'7" x 8'7" (3.54m x 2.62m)

Spacious double bedroom with double-glazed window to the front. Coving. Radiator. Carpeted.

BEDROOM 2

8'6" x 7'8" (2.60m x 2.36m)

Good-sized single bedroom with double-glazed window to the side. Coving. Radiator. Carpeted.

BEDROOM 3

13'10" x 8'6" (4.22m x 2.60m)

Good-sized double bedroom with glazed timber doors providing natural light and access to the conservatory. Coving. Radiator. Carpeted.

CONSERVATORY

11'10" x 9'1" (3.61m x 2.77m)

Bright Conservatory with double-glazed wrap around windows overlooking the garden. Electric heater. Laminate flooring. UPVC door provides access to the garden.

BATHROOM

8'2" x 6'5" (2.49m x 1.98m)

4-piece suite comprising: W.C, wash hand basin, bath and a shower enclosure with folding door and an electric shower unit. Opaque double-glazed window to the rear. Fully tiled. Radiator. Tiled flooring.

GARDEN

To the front of the property is a low maintenance garden laid with gravel containing established shrubs with a driveway to the side providing access to the garage and additional off-street parking. Timber gate to the side leads to the rear garden. The rear garden is enclosed within a timber fence surround and is again low maintenance with established plants and shrubs. Ample space for garden furniture to relax and enjoy recreation time in the sun. Timber door provides access to the garage. Shed provides storage space.

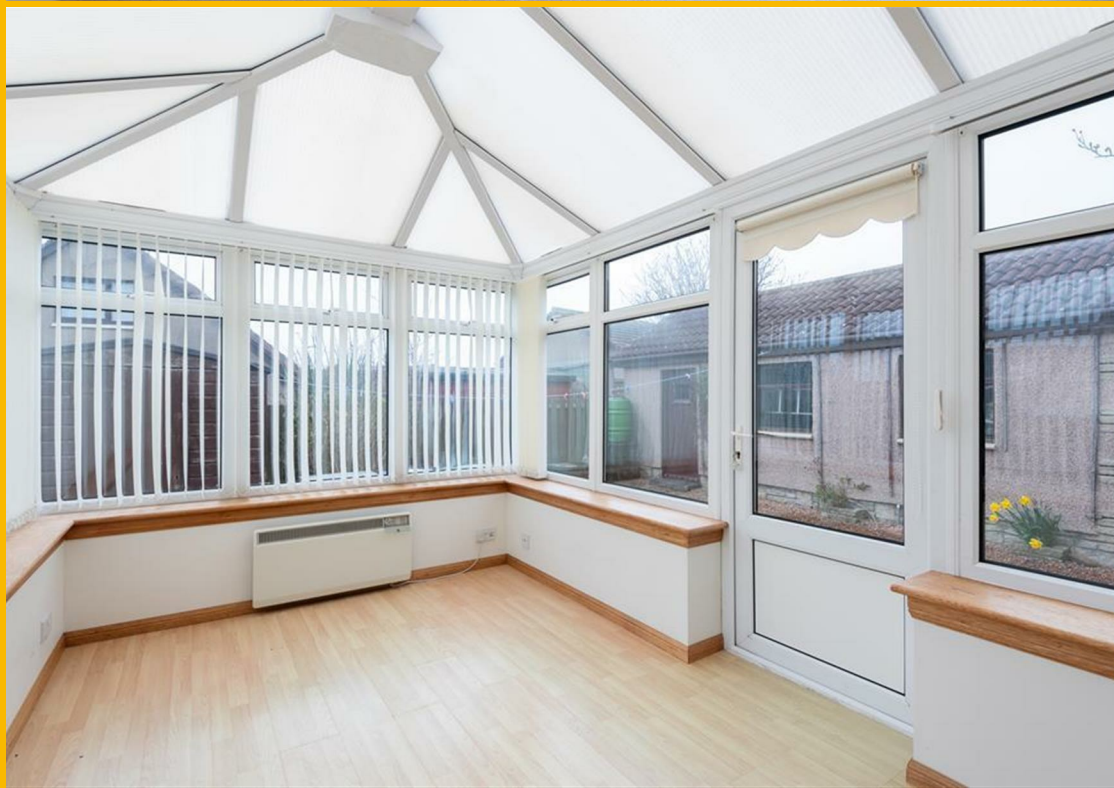
GARAGE

21'2" x 9'7" (6.47m x 2.94m)

Spacious detached garage accessed via a metal up and over door provides secure parking with space for additional storage. Provision for light and power with concrete flooring.

AGENTS NOTES

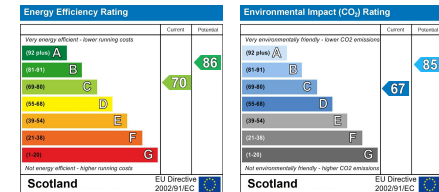
Please note that all room sizes are measured approximate to widest points.







THIS FLOORPLAN IS PROVIDED WITHOUT WARRANTY OF ANY KIND. SENSOPIA DISCLAIMS ANY WARRANTY INCLUDING, WITHOUT LIMITATION, SATISFACTORY QUALITY OR ACCURACY OF DIMENSIONS.



Under the Property Misdescription Act 1991 we endeavour to make our sales details accurate and reliable but they should not be relied upon as statements or representations of fact and they do not constitute any part of an offer of contract. The seller does not make any representations to give any warranty in relation to the property and we have no authority to do so on behalf of the seller. Services, fittings and equipment referred to in the sales details have not been tested (unless otherwise stated) and no warranty can be given as to their condition. We strongly recommend that all the information which we provide about the property is verified by yourself or your advisers. Under the Estate Agency Act 1991 you will be required to give us financial information in order to verify your financial position before we can recommend any offer to the vendor.