

first for homes

first for property in life - [firstforhomes.co.uk](https://www.firstforhomes.co.uk)

Contact Allan England's Team

01592 752 944



Durriss Drive, Glenrothes

Offers over £106,995

Durriss Drive, Glenrothes

Beautifully Upgraded 3 Bedroom Terraced Villa Situated In Glenrothes! Ideal First Time Purchase.

Allan England's Award-Winning Team at first for homes are proud to welcome to the market this beautifully presented 3-bedroom Terraced family home situated within the area of Tanshall, Glenrothes. This property offers living space for all the family comprising; lounge, kitchen, dining room, 3 bedrooms family bathroom & cloaks/WC. Externally, there are low maintenance garden grounds to the front and rear. This property is an Ideal First Home or Buy-To-Let Investment. Don't miss out! Viewing highly recommended.

HOME REPORT - £112,000

EPC - C

COUNCIL TAX - B

Call first for homes - First for trust... first for service... first for aftercare.

Glenrothes is regarded as one of the most successful Towns in Scotland with a wealth of local amenities including Kingdom Shopping Centre as well as sport and leisure at Michael Woods and a multi-screen cinema. Glenrothes boasts its very own 18-hole Golf course and both Primary and Secondary schooling are available. For the commuter the A92 allows swift access to Edinburgh and there are railway stations at both Thornton and Markinch.

- Beautifully Upgraded 3 Bedroom Terraced Villa
- Situated In Glenrothes, Fife!
- Ideal First Time Purchase.
- 3 Bedrooms
- Family Bathroom & Separate WC
- Ideal Investment Opportunity
- HOME REPORT - £112,000
- EPC - C
- COUNCIL TAX - B





SITUATION – Glenrothes

ENTRANCE HALLWAY

LOUNGE 18'6" x 11'11" approx (5.66m x 3.64m approx)

KITCHEN 8'11" x 8'9" approx (2.72m x 2.68m approx)

DINING ROOM

9'4" x 8'10" approx (2.86m x 2.70m approx)

STAIRS TO THE UPPER LEVEL

BEDROOM 1

12'1" x 9'8" approx (3.70m x 2.96m approx)

BEDROOM 2

10'2" x 8'7" approx (3.10m x 2.63m approx)

BEDROOM 3

8'9" x 7'10" approx (2.67m x 2.40m approx)

BATHROOM 8'1" x 5'7" approx (2.48m x 1.72m approx)

WC CLOAKS

FRONT & REAR GARDEN GROUNDS

INFORMATION



Information

These particulars are prepared on the basis of information provided by our clients. We have not tested the electrical system or any electrical appliances, nor where applicable, any central heating system. All sizes are recorded by electronic tape measurement to give an indicative, approximate size only. Prospective purchasers should make their own enquiries – no warranty is given or implied. This schedule is not intended to, and does not form any contract.

FREE Valuation

Selling Your Home?

Choose first for homes - a highly experienced estate agency team you can trust to sell your home at the highest possible price. Offering fantastic savings on selling fees, with no compromise on service, free professional photography highlighting your home in its best light, first for homes will be your first choice. Contact us today to arrange your appointment.



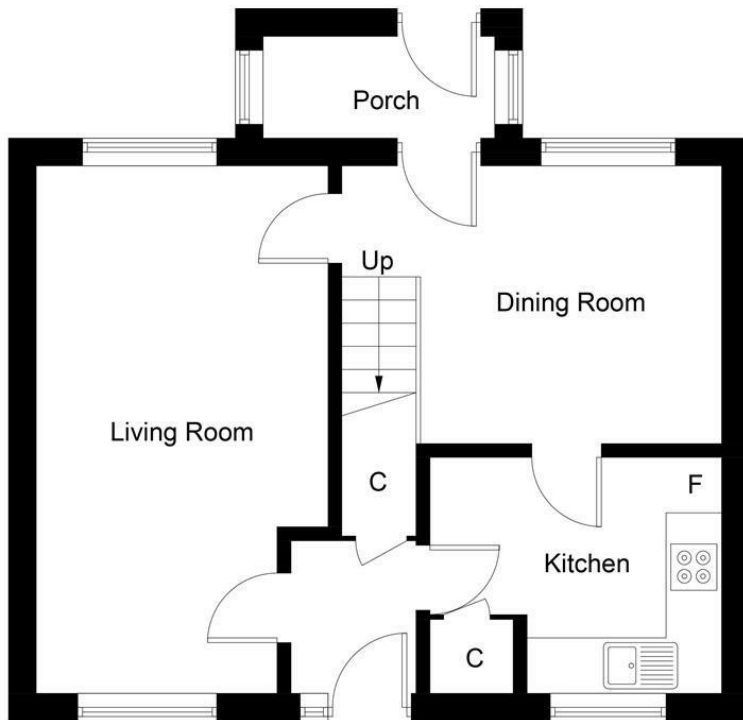
first for trust



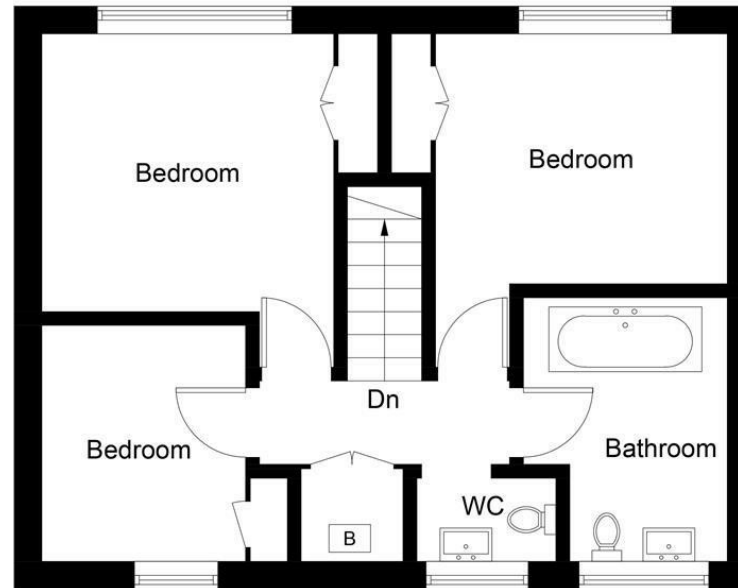
first for service



first for aftercare



Ground Floor



First Floor

Illustration for identification purposes only, measurements are approximate, not to scale. floorplansUsketch.com © (ID1073383)

first for homes
first for property in life - firstforhomes.co.uk

Contact Allan England's Team
01592 752 944

32 North Street, Glenrothes, Fife KY7 5NA
Fax: 01592 807947
sales@firstforhomes.co.uk
www.firstforhomes.co.uk