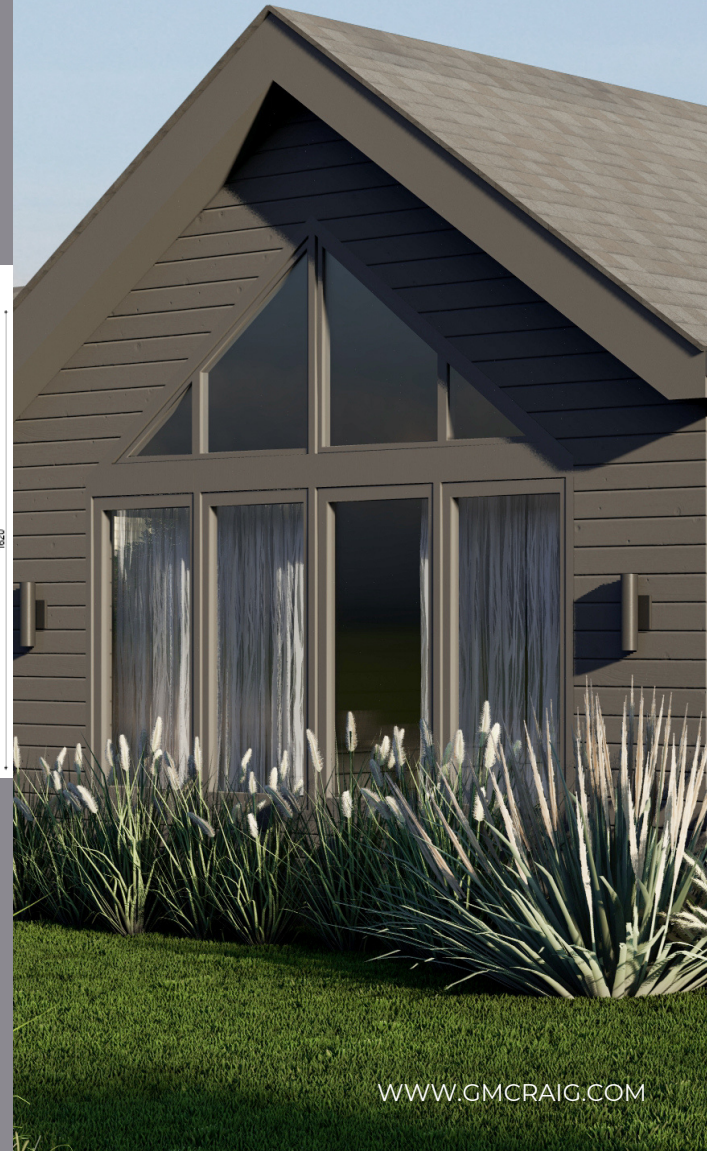




## SPECIFICATIONS

- Spacious 4 bedroom layout
- 2 bathrooms (one ensuite)
- Exclusive development
- Spacious garden
- Fitted kitchen
- Ceramic tiling
- Under floor heating
- Low energy home
- Air source heat pump
- MVHR (Mechanical Ventilation Heat Recovery)
- High performance doors and windows
- High performance timber frame

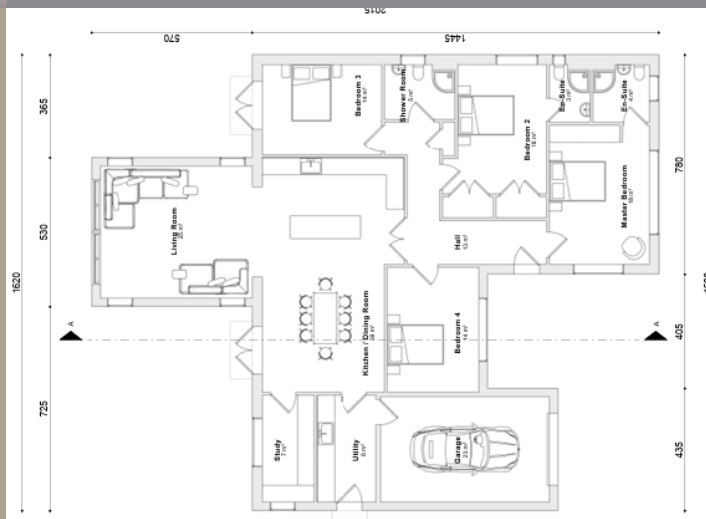
## PLOT 24 BROCHURE



## VILLAGE MEADOWS

Village Meadows is more than just a housing development; it's a gateway to a lifestyle that embraces nature, tranquillity, and community. Nestled in the heart of Northumberland, residents will have access to scenic walking trails, charming local amenities, and the warmth of village life, all within reach of the region's natural wonders.

With only a limited number of these exceptional properties available, now is the time to secure your place in this unique rural haven. Contact GMC to arrange a viewing and take the first step toward making Village Meadows your new home.



01289 - 304409

info@gmcraig.com

www.gmcraig.com

Visit our social media

@gmcbuilders

WWW.GMCRAIG.COM

# OPEN PLAN

The open plan kitchen living area at Plot 24 is a harmonious fusion of modernity and functionality. Designed to be the heart of the home, this space seamlessly integrates the kitchen and living areas, creating a welcoming environment for relaxation and entertainment.

The stylish kitchen, equipped with state-of-the-art appliances, flows effortlessly into the spacious living area, where natural light bathes the room, creating an inviting atmosphere. Whether you're entertaining guests or enjoying a quiet evening in, the open plan layout ensures a fluid and inclusive living experience, perfect for modern lifestyles.



# SLEEP

The four bedrooms at Plot 24 epitomise comfort and luxury. The master bedroom complete with stylish ensuite.

Each room is thoughtfully designed to provide a serene retreat, with ample space and natural light.



# RELAX

The two full bathroom suites at Plot 24 blend elegant design with modern functionality.

Each suite features sophisticated fixtures and sleek finishes.