



19 Westwood Road

Newmains, Wishaw, ML2 9DA

Offers in the region of £85,000

A lovely bright spacious upper flat within Newmains, Wishaw, central to all amenities.

The immaculate accommodation comprises entrance hall, large lounge, modern fitted dining kitchen, 2 double bedrooms and shower room.

Further benefits include double glazing, gas central heating, ample parking to front and communal gardens to rear.

This apartment in Westwood Road is situated central to all local amenities including shops, schooling and transport links, with regular bus services into Wishaw Town Centre. For the commuter the M8 and M74 motorway networks allow for fast and easy access to Glasgow, Edinburgh and all points beyond.

EPC D.

Viewing

Please contact our Pomphreys Properties Ltd Office on 01698373365 if you wish to arrange a viewing appointment for this property or require further information.

- Upper flat central to all amenities
- 2 double bedrooms
- Ample parking to front
- Modern kitchen



2



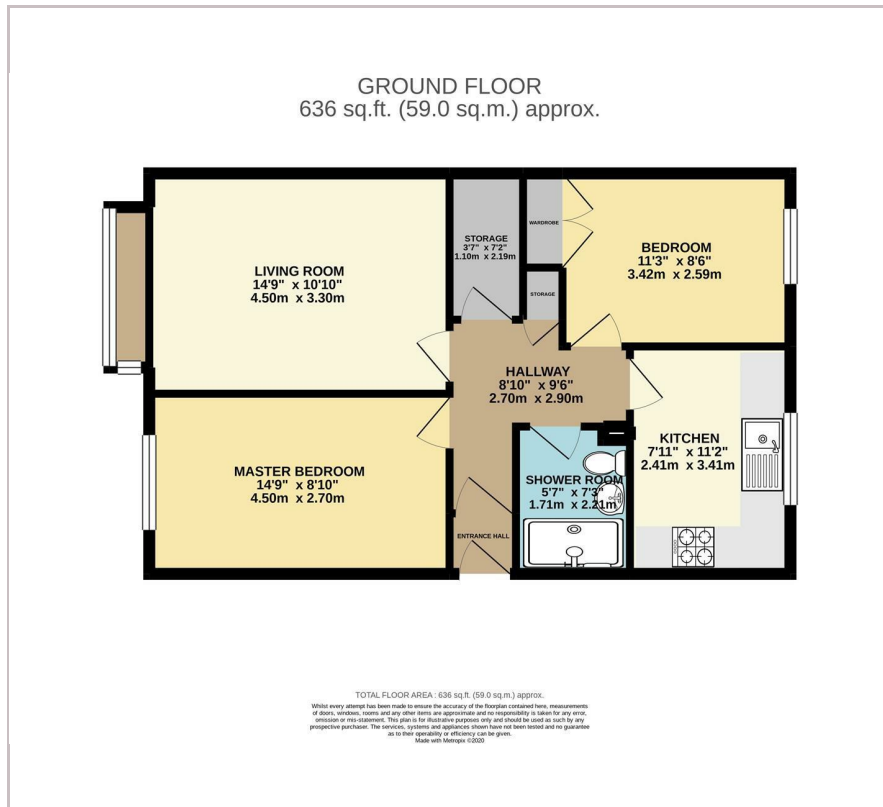
1



1



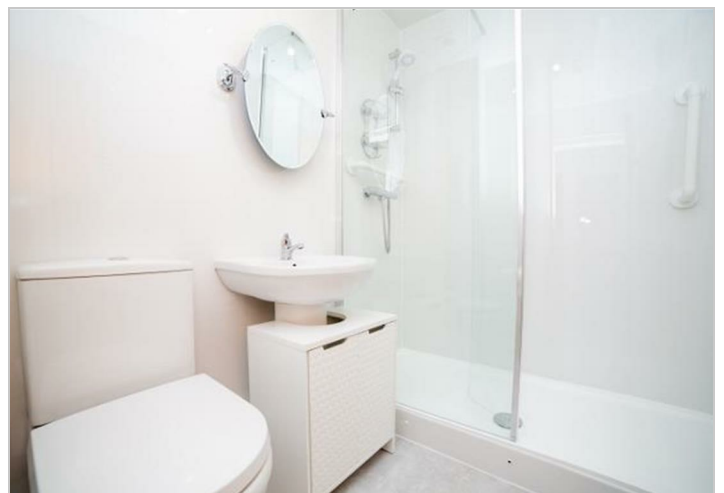
Floor Plan



Area Map



Energy Efficiency Graph



These particulars, whilst believed to be accurate are set out as a general outline only for guidance and do not constitute any part of an offer or contract. Intending purchasers should not rely on them as statements of representation of fact, but must satisfy themselves by inspection or otherwise as to their accuracy. No person in this firm's employment has the authority to make or give any representation or warranty in respect of the property.