



13 Selkirk Street

, Wishaw, ML2 8PA

Offers over £103,000

Pomphreys Properties are delighted to present to the market this spacious end terraced villa situated within a highly sought after popular yet quiet residential area,

Early internal viewing is advised to appreciate the size of accommodation on offer.

Formed over two levels, the accommodation comprises, on the ground floor, bright reception hallway, great sized lounge with dual aspects, a fab dining kitchen and utility room. On the upper level are three well proportioned bedrooms and wet room.

Additionally, the property benefits from easily maintained enclosed landscaped gardens to front and rear, long driveway with ample parking, timber garage, gas central heating and double glazing.

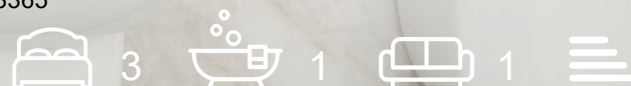
Selkirk Street is situated a few minutes from the Town Centre, where all-day-to-day requirements can be catered for, including all shopping, schooling, recreational pursuits and various public transport links. For the commuter the M8 and M74 motorway networks allow for fast and easy access to Glasgow, Edinburgh and all points beyond.

EPC D.

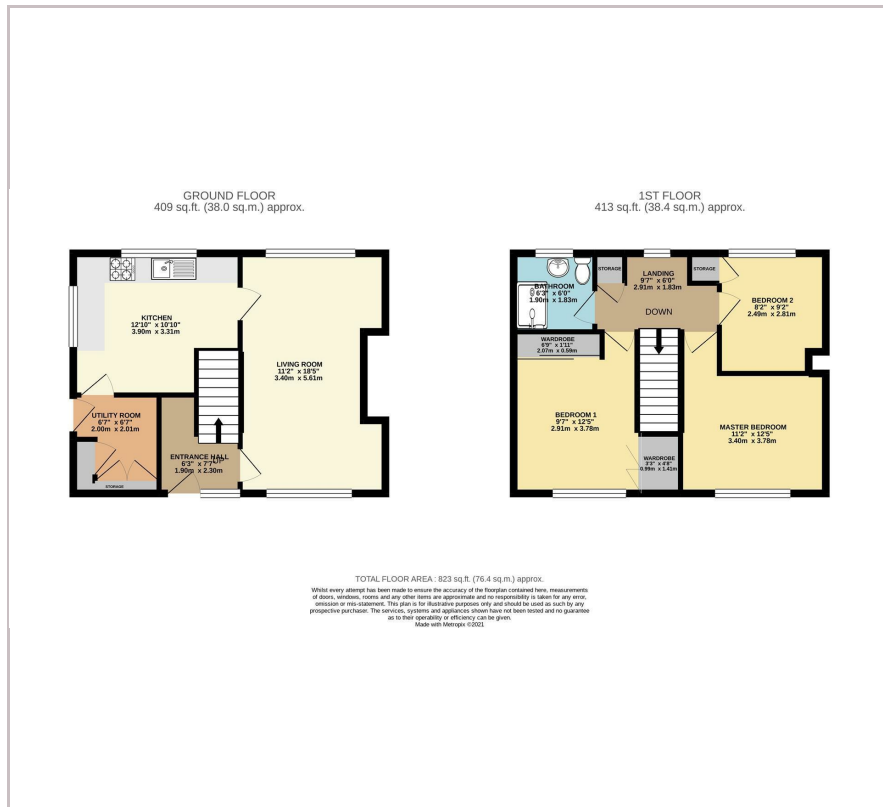
Viewing

Please contact our Pomphreys Properties Ltd Office on 01698373365 if you wish to arrange a viewing appointment for this property or require further information.

- Three bedrooms!
- Large Kitchen with utility room
- Driveway
- Landscaped Gardens



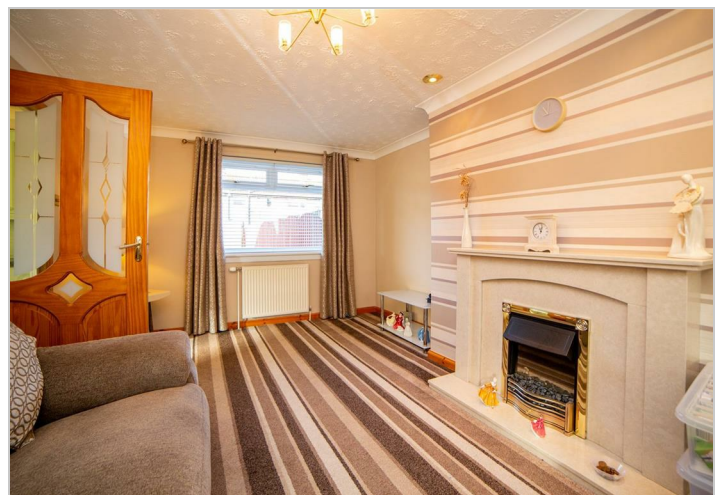
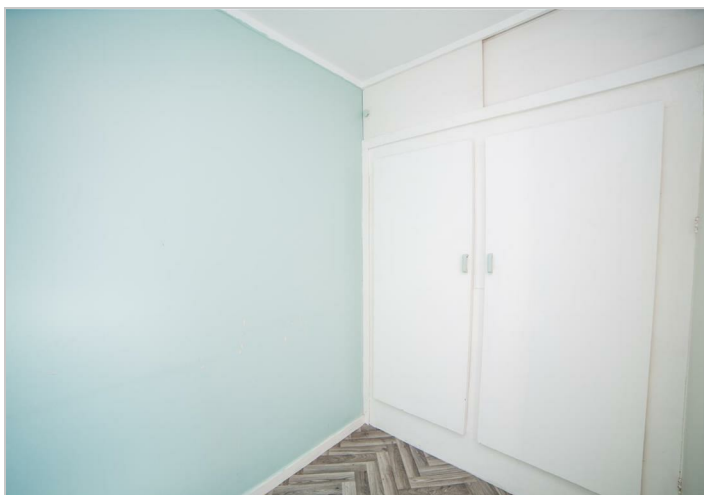
Floor Plan



Area Map



Energy Efficiency Graph



These particulars, whilst believed to be accurate are set out as a general outline only for guidance and do not constitute any part of an offer or contract. Intending purchasers should not rely on them as statements of representation of fact, but must satisfy themselves by inspection or otherwise as to their accuracy. No person in this firm's employment has the authority to make or give any representation or warranty in respect of the property.