



## 6 Noddleburn Meadow

, Largs, KA30 8UD

**Offers over £178,000**

Pomphreys Properties are delighted to present to the market this stunning, spacious and immaculate semi detached villa.

Located in this popular small development of modern homes on the north side of Largs and presented in truly walk in condition early viewing is highly recommended.

This family home is formed over two levels and comprises, on the ground level, entrance hallway, large lounge, modern conservatory, fitted dining kitchen with integrated appliances and cloakroom/wc. On the upper level are three bedrooms (two with fitted wardrobes) and shower room. Karndean flooring is laid to the entrance hall, lounge and conservatory, providing a natural flow between rooms.

A monoblocked driveway providing ample off street parking leads to the beautiful and private landscaped rear garden, professionally paved for easy maintenance with a selection of shrubs, bushes, flower beds and enclosed by timber fencing.

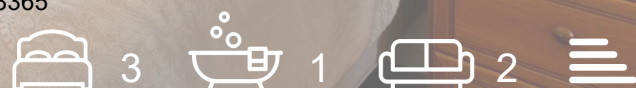
Further benefits include double glazing and gas central heating.

EPC C.

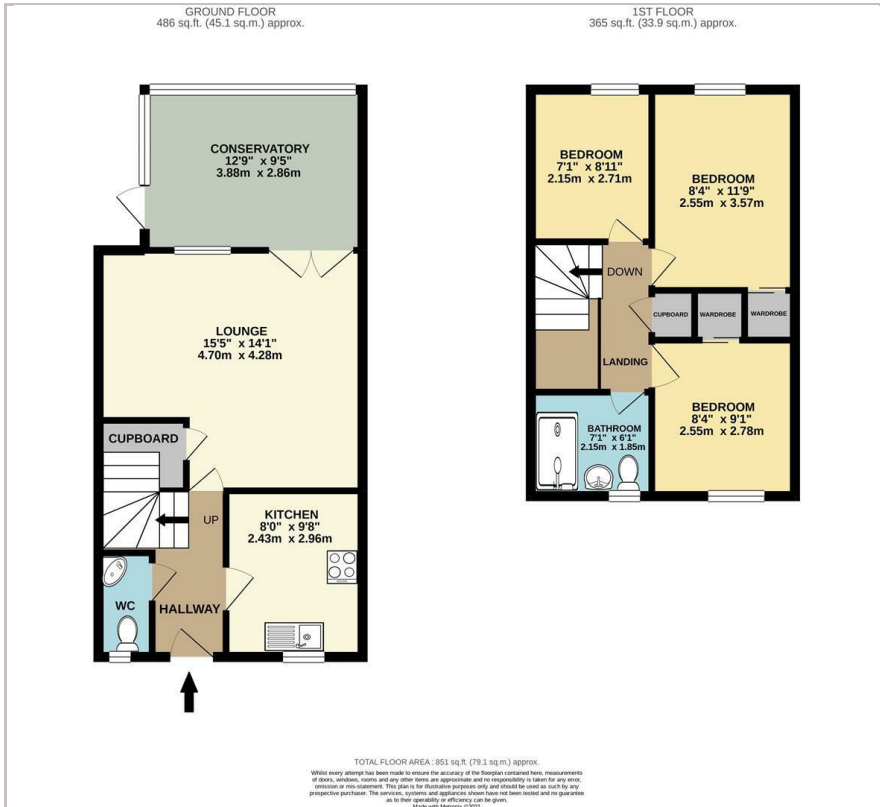
### Viewing

Please contact our Pomphreys Properties Ltd Office on 01698373365 if you wish to arrange a viewing appointment for this property or require further information.

- A stunning and immaculate property
- Conservatory
- Three bedrooms
- Lovely landscaped garden grounds
- Driveway



## Floor Plan



## Area Map



## Energy Efficiency Graph



These particulars, whilst believed to be accurate are set out as a general outline only for guidance and do not constitute any part of an offer or contract. Intending purchasers should not rely on them as statements of representation of fact, but must satisfy themselves by inspection or otherwise as to their accuracy. No person in this firm's employment has the authority to make or give any representation or warranty in respect of the property.