



## 7 Braehead Quadrant

, Motherwell, ML1 5DJ

**Offers over £103,000**

NEW TO THE MARKET!

An extremely spacious semi detached villa, situated within large enclosed landscaped gardens.

The accommodation comprises reception hall, bright lounge, great sized dining kitchen, 3 well proportioned double bedrooms and bathroom.

Further benefits include double glazing, gas central heating, well maintained gardens to front and rear with a long driveway to the side.

Newarthill lies to the North of Motherwell, a great commuter area serving the whole of central Scotland with good road networks including the M8 and M74 motorways nearby. There is also a local train station, Carfin, not far from the property. Good amenities and facilities are close by, including an excellent 18 hole golf course and new leisure complex, Motherwell College, excellent schools to both Primary and Secondary levels and a great variety of shops and retail parks.

EPC D

### Viewing

Please contact our Pomphreys Properties Ltd Office on 01698373365 if you wish to arrange a viewing appointment for this property or require further information.

- Three Double Bedrooms
- Fitted Dining Kitchen
- Landscaped enclosed gardens
- Large rear garden
- Driveway



3



1

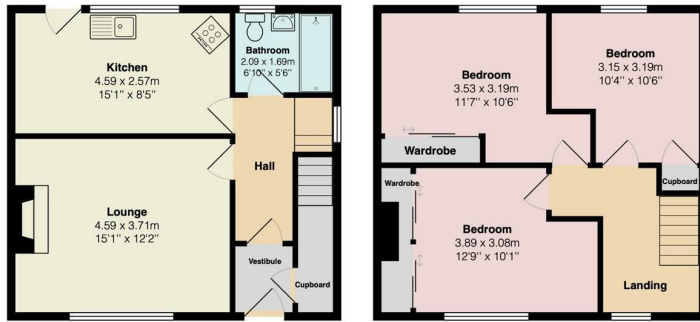


1



## Floor Plan

7 Breahead Quadrant, Newarthill



Total Area: 86.9 m<sup>2</sup> ... 935 ft<sup>2</sup>

All measurements are approximate and for display purposes only

## Area Map



## Energy Efficiency Graph



These particulars, whilst believed to be accurate are set out as a general outline only for guidance and do not constitute any part of an offer or contract. Intending purchasers should not rely on them as statements of representation of fact, but must satisfy themselves by inspection or otherwise as to their accuracy. No person in this firms employment has the authority to make or give any representation or warranty in respect of the property.