



RESIDENCE

6 Braehead Court, Strathaven, ML10 6LR

www.residenceestateagents.co.uk

Viewing by appointment with Residence Strathaven
T: 01357 572222 | E: strathaven@residenceestateagents.co.uk | A: 3 Bridge Street, Strathaven, ML10 6AN



We believe these details to be accurate; however, they do not form any part of a contract. Fixtures and fittings are not included unless specified in the enclosed. Photographs are for general information and it must not be inferred that any item is included for sale with the property. All distances and measurements are approximate. Floorplans may not be to scale and are for illustration purposes only.

2 Bedrooms | 1 Public Rooms | 1 Bathrooms

807.00 sq ft | EER = C

This spacious and beautifully presented 2-bedroom ground floor flat has been modernised and upgraded throughout. The property features its own lock up garage and substantial, residents only communal gardens.

The flat is sure to appeal to a wide audience and is in walk in condition. The accommodation comprises, welcoming reception hallway, generous sized open plan lounge and dining room with aspects to front, modern fitted integrated kitchen that has a range of base and wall mounted storage units with worktop surfaces. The flat has 2 bedrooms, both with fitted wardrobes whilst there is a contemporary designed and fitted family bathroom with 4-piece suite.

Features of the flat include gas fired central heating, double glazing, security-controlled entry system and lock up garage.

Early viewing of this sure to be popular apartment is highly advised.

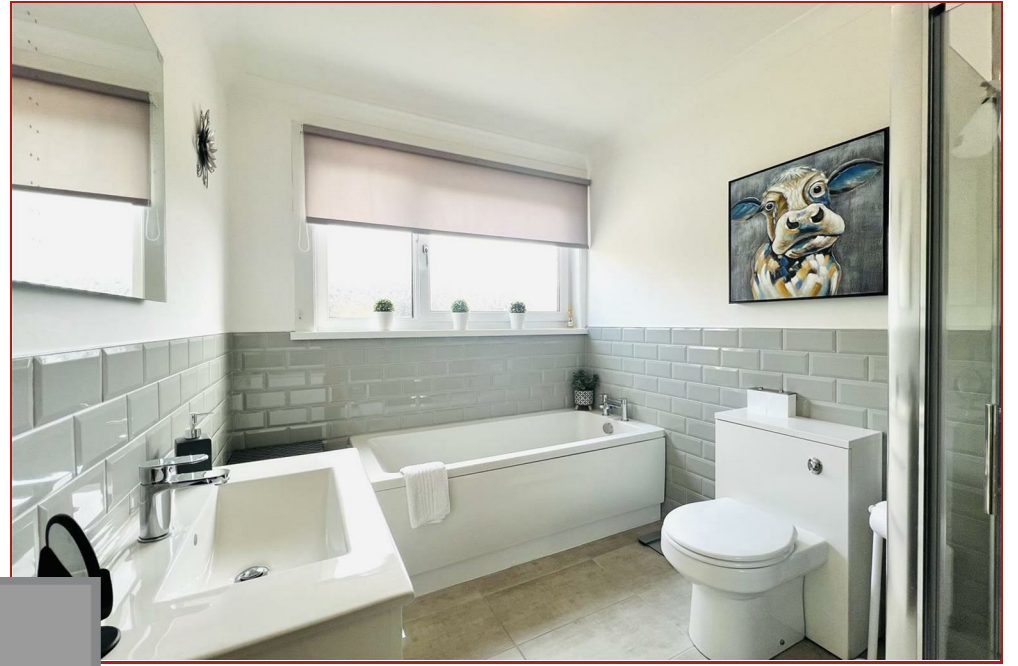
Strathaven is an admired and popular village which offers an excellent mix of shopping facilities and sports facilities including swimming baths, bowling clubs, golf courses, public parks and country walks. The area is highly regarded for its schooling whilst for those commuting, there are excellent road links to the surrounding towns which include East Kilbride, Hamilton and also links to the M74 motorway which connects the M8 motorway to Glasgow and Edinburgh

Braehead Court



Floor Plan measurements are approximate and are for illustrative purposes only. While we do not doubt the floor plans accuracy, we make no guarantee, warranty or representation as to the accuracy and completeness of the floor plan. You or your advisors should conduct a careful, independent investigation of the property to determine to your satisfaction as to the suitability of the property for your space requirements.

Produced by Plush Plans Ltd



RESIDENCE

