

# first for homes

first for property in life - [firstforhomes.co.uk](https://www.firstforhomes.co.uk)

Contact Allan England's Team

01592 752 944



Falcon Drive, Glenrothes

**Offers over £109,995**



# Falcon Drive, Glenrothes

## ANOTHER OPPORTUNITY TO VIEW

Bright & Spacious 2-Bedroom End-Terraced Villa Situated Within Dovecot, Central Glenrothes!

Allan England's award-winning team at first for homes welcome to the market this bright and spacious 2 bed End-Terraced Villa situated within the desirable area of Dovecot, Glenrothes. The property offers spacious living accommodation comprising: entrance hall, lounge/diner, kitchen, 2 double bedrooms with built in storage and family bathroom. Externally, there are beautiful landscaped gardens to the front and rear and a 2 car driveway. Early viewing advised to ensure you don't miss out!

EPC RATING - D  
COUNCIL TAX BAND - B

Call first for homes - first for trust... first for service... first for aftercare!

Glenrothes is regarded as one of the most successful Towns in Scotland with a wealth of local amenities including Kingdom Shopping Centre as well as sport and leisure at Michael Woods and a multi-screen cinema. Glenrothes boasts its very own 18-hole Golf course and both Primary and Secondary schooling are available. For the commuter the A92 allows swift access to Edinburgh and there are railway stations at both Thornton and Markinch.

- End Terraced Villa In A Sought After Location of Dovecot, Glenrothes
- Move In Condition
- 2 Double Bedrooms With Storage
- 2 Car Driveway
- Beautiful Landscaped Gardens
- Early Viewing Recommended
- Home Report Value £115,000
- EPC Rating D
- Council Tax Band B







**SITUATION – Glenrothes**

**ENTRANCE HALLWAY**

**LOUNGE/DINER**

19'4" x 11'2" (approx) (5.91 x 3.41m (approx))

**KITCHEN** 9'6" x 7'11" (approx) (2.90 x 2.43m (approx))

**STAIRS TO UPPER LEVEL**

**BEDROOM 1**

14'8" x 9'4" (approx) (4.48 x 2.87m (approx))

**BEDROOM 2**

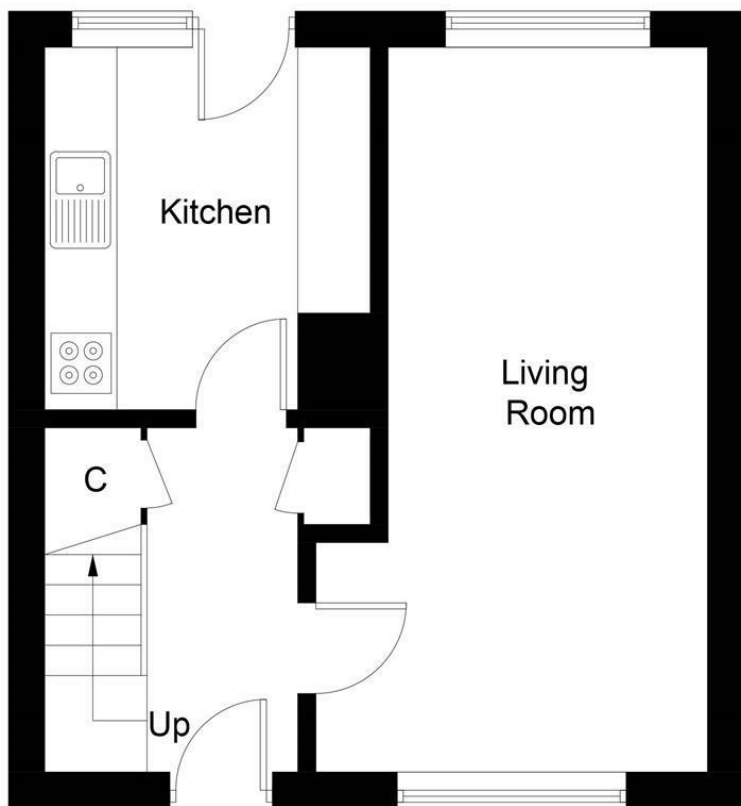
11'3" x 8'8" (approx) (3.45 x 2.66m (approx))

**FAMILY BATHROOM**

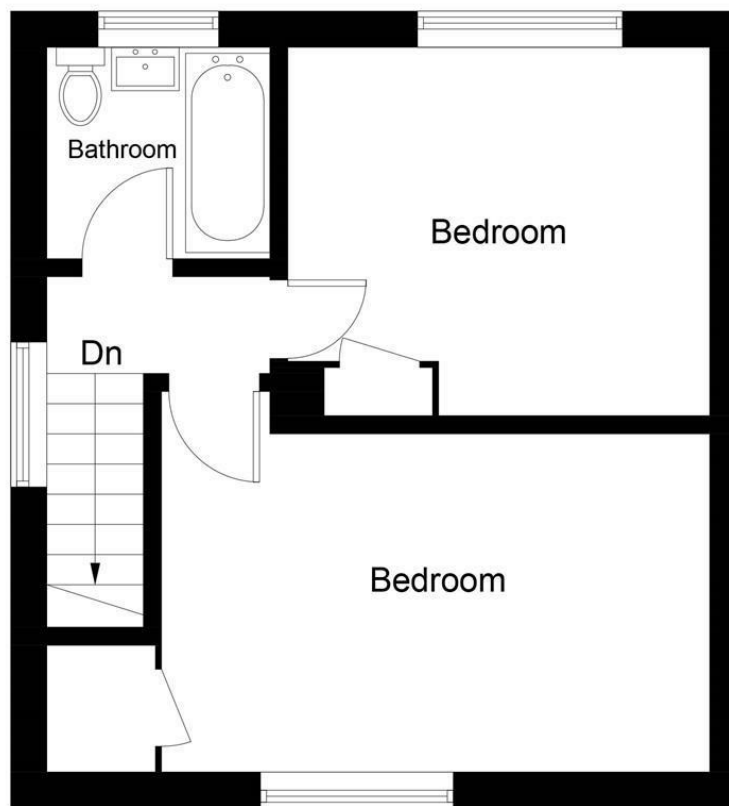
**LANDSCAPED FRONT AND REAR GARDEN GROUNDS**

**DRIVEWAY TO REAR WITH SIDE ACCESS**

**INFORMATION**



**Ground Floor**



**First Floor**

Illustration for identification purposes only, measurements are approximate, not to scale. floorplansUsketch.com © (ID1062026)

## Information

These particulars are prepared on the basis of information provided by our clients. We have not tested the electrical system or any electrical appliances, nor where applicable, any central heating system. All sizes are recorded by electronic tape measurement to give an indicative, approximate size only. Prospective purchasers should make their own enquiries – no warranty is given or implied. This schedule is not intended to, and does not form any contract.

## FREE Valuation

### Selling Your Home?

Choose first for homes - a highly experienced estate agency team you can trust to sell your home at the highest possible price. Offering fantastic savings on selling fees, with no compromise on service, free professional photography highlighting your home in its best light, first for homes will be your first choice. Contact us today to arrange your appointment.

-  **first for trust**
-  **first for service**
-  **first for aftercare**

**first for homes**  
 first for property in life - firstforhomes.co.uk

Contact Allan England's Team  
**01592 752 944**

32 North Street, Glenrothes, Fife KY7 5NA  
 Fax: 01592 807947  
 sales@firstforhomes.co.uk  
 www.firstforhomes.co.uk