

first for homes

first for property in life - [firstforhomes.co.uk](https://www.firstforhomes.co.uk)

Contact Allan England's Team

01592 752 944



Kings Meadow, Coaltown of Balgonie

Price £225,000

Kings Meadow, Coaltown of Balgonie

IT'S ALL INCLUDED! MANY EXTRAS COME AS STANDARD!

Exceptional Quality Comes Standard!

Buy your dream home with your own choice of interior

JONATHAN - A STUNNING/LUXURIOUS 2 BEDROOM SEMI DETACHED BUNGALOW WITH DRIVEWAY! Built By Easy Living Developments!

Allan England's team at First for Homes are proud to offer for sale this impressive 2-Bed Semi Detached Bungalow (70m²) located in a highly sought-after new development of Kings Meadow, Coaltown of Balgonie built by Easy Living Developments, a Fife based multi award winning builder you can trust to build your dream home.

The immaculate new build provides luxurious family living accommodation comprising open plan lounge/kitchen with bi-fold doors leading to rear garden, stunning high specification German kitchen (with NEFF integrated appliances), utility room, storage facilities, 2 double bedrooms with built-in wardrobes, family bathroom with separate shower. There are gardens grounds with a driveway for minimum 2 cars. EV charging points as standard. Option to include solar panels. Ground Source Heating

* Photographs for Illustration Purposes Only

* Reservation Fee Applies

* Call to Enquire

PHOTOS ARE FOR ILLUSTRATION PURPOSES ONLY

- Stunning Semi Detached Bungalow "JONATHAN"
- New Development Kings Meadow, Coaltown of Balgonie
- BUILT BY EASY LIVING DEVELOPMENTS
- Open Plan Lounge/Luxury German Kitchen / Space for Table and Chairs (fitted with NEFF appliances)
- 2 Double Bedrooms with Fitted Wardrobes
- 4- Piece Family Bathroom Fitted with Luxury Porcelanosa Tiling & Luxury Fixtures
- Driveway Minimum 2 Cars
- Generous Garden Grounds
- EV charging points as standard. Option to include solar panels. Ground Source Heating
- Design your dream home with kitchen/tiling choices





SITUATION – Coaltown of Balgonie

PHOTOGRAPHS (Illustration Purposes Only)

FLOOR SPACE - 70m²

ENTRANCE VESTIBULE

HALLWAY 10'8 x 7'6 approx (3.25m x 2.29m approx)

LOUNGE/KITCHEN/DINER
26'1 x 13'10 approx (7.95m x 4.22m approx)

UTILITY 6'3 x 5'11 approx (1.91m x 1.80m approx)

BEDROOM 1 9'6 x 9'6 approx (2.90m x 2.90m approx)

BEDROOM 2 9'6 x 9'6 approx (2.90m x 2.90m approx)

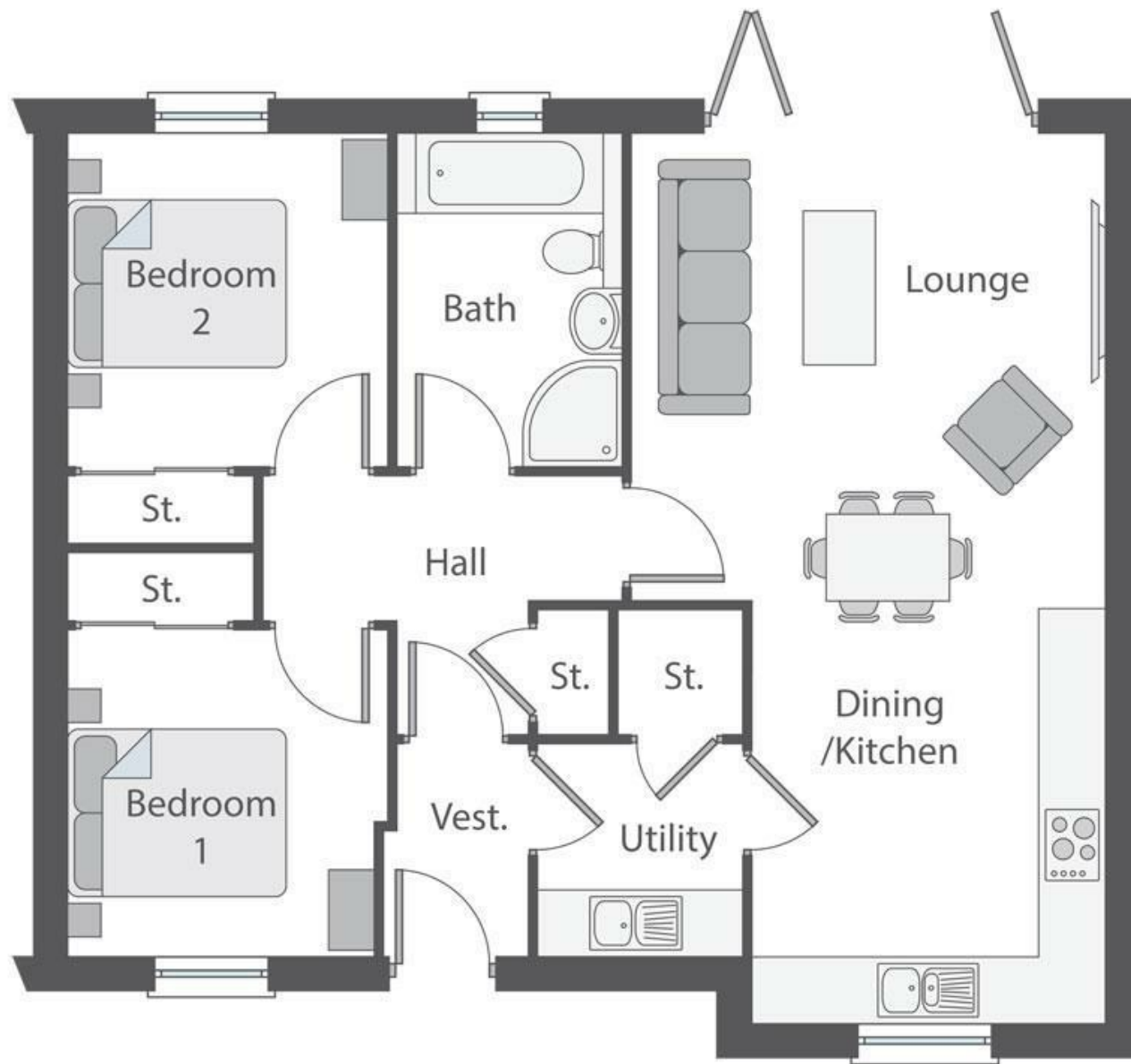
FAMILY BATHROOM WITH SEPERATE SHOWER
9'9 x 6'9 approx (2.97m x 2.06m approx)

GARDEN GROUNDS

DRIVEWAY FOR APPROX 2 CARS

INFORMATION





Information

These particulars are prepared on the basis of information provided by our clients. We have not tested the electrical system or any electrical appliances, nor where applicable, any central heating system. All sizes are recorded by electronic tape measurement to give an indicative, approximate size only. Prospective purchasers should make their own enquiries – no warranty is given or implied. This schedule is not intended to, and does not form any contract.

FREE Valuation

Selling Your Home?

Choose first for homes - a highly experienced estate agency team you can trust to sell your home at the highest possible price. Offering fantastic savings on selling fees, with no compromise on service, free professional photography highlighting your home in its best light, first for homes will be your first choice. Contact us today to arrange your appointment.



first for trust



first for service



first for aftercare

first for homes

first for property in life - firstforhomes.co.uk

Contact Allan England's Team

01592 752 944

32 North Street, Glenrothes, Fife KY7 5NA

Fax: 01592 807947

sales@firstforhomes.co.uk

www.firstforhomes.co.uk