

**first for homes**

first for property in fife - [firstforhomes.co.uk](https://www.firstforhomes.co.uk)

Contact Allan England's Team

**01592 752 944**



**Veronica Crescent, Kirkcaldy**

**Offers over £152,995**

# Veronica Crescent, Kirkcaldy

Beautifully Renovated 3-Bed Terraced Villa With 4-Car Driveway Situated In A Desirable Area of Kirkcaldy!

Allan England's award winning team at first for homes are proud to welcome to the market this Beautifully Presented 3-Bedroom Terraced Villa situated within a desirable area of Kirkcaldy. The property offers lovely, bright and spacious living accommodation throughout comprising: entrance hall, lounge with oak wood doors and finishing's, modern kitchen, downstairs bathroom, stairs to upper level provide master bedroom with upgraded en-suite and 2 further generous bedrooms. Externally, there are gardens to the front and rear and the benefit of a 4 car driveway. The property has been re rendered and the roof replaced recently. Boiler approx. 5 year old. New windows 2018. Early viewing is highly recommended to ensure you don't miss out!

EPC RATING- C  
COUNCIL TAX BAND - B

Call first for homes - first for trust... first for service... first for aftercare!

The popular coastal Town of Kirkcaldy has a wide range of services including shopping, banking, schools and a host of recreational facilities such as the stunning Beveridge Park and the Adam Smith Theatre. For the commuter Kirkcaldy boasts a mainline train station and the A92 road link giving access to Edinburgh and all major local towns.

- Beautifully Presented 3 Bed Mid Terraced Villa
- Lounge With Oak Wood Doors & Finishings
- Modern Kitchen
- Master Bedroom With Upgraded En-Suite
- Family Bathroom Downstairs
- Front & Rear Gardens
- 4 Car Driveway
- EPC Rating- C
- Council Tax Band- B





**SITUATION - Kirkcaldy**

**ENTRANCE HALLWAY**

**LOUNGE**

19'1" x 11'1" (approx) (5.82m x 3.38m (approx))

**KITCHEN**

11'10" x 7'9" (approx) (3.63m x 2.37m (approx))

**BATHROOM DOWNSTAIRS**

**STAIRS TO UPPER LEVEL**

**BEDROOM 1**

12'3" x 8'3" (approx) (3.74m x 2.53m (approx))

**MASTER EN-SUITE**

7'8" x 4'1" (approx) (2.36m x 1.26m (approx))

**BEDROOM 2**

14'10" x 8'10" (approx) (4.54m x 2.71m (approx))

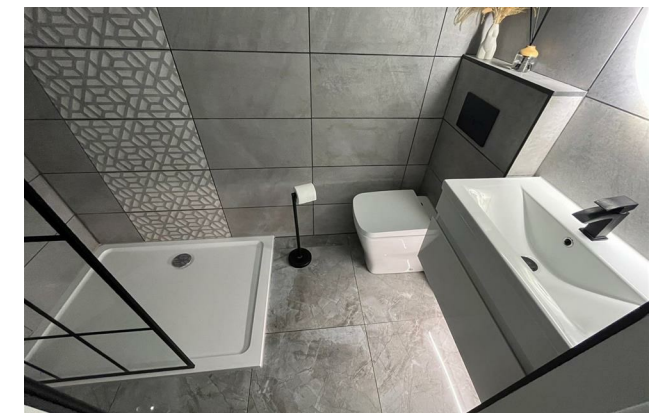
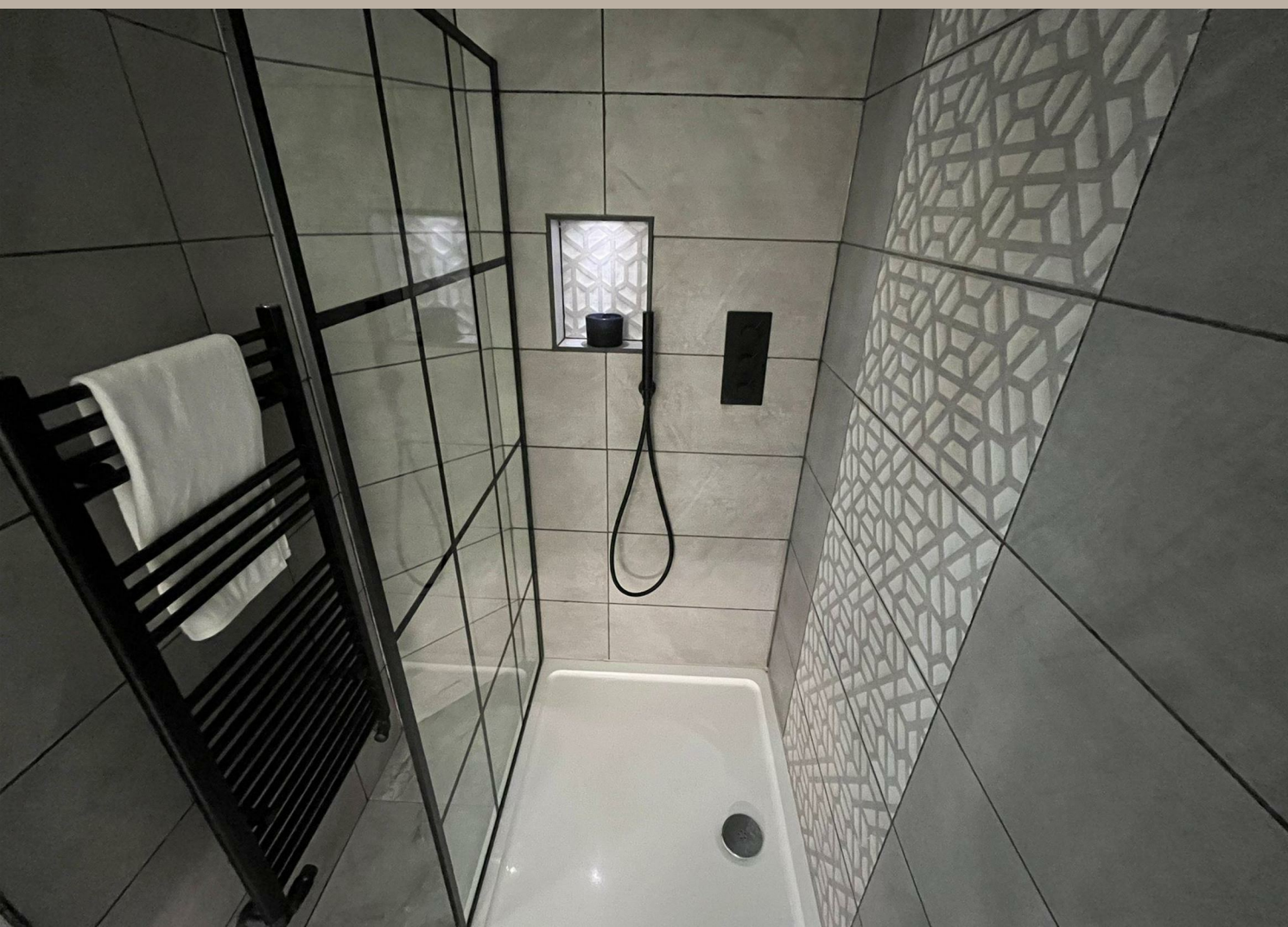
**BEDROOM 3**

11'1" x 9'10" (approx) (3.38m x 3.03m (approx))

**4 CAR DRIVEWAY**

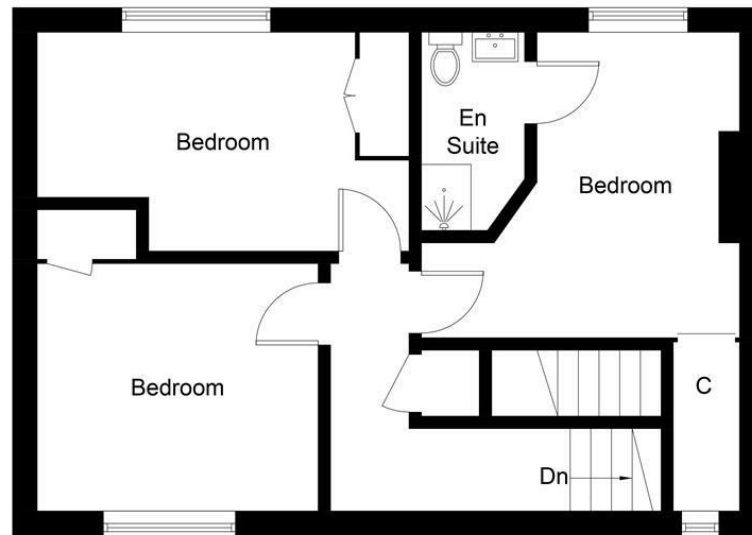
**FRONT & REAR GARDENS**

**INFORMATION**





Ground Floor



First Floor

Illustration for identification purposes only, measurements are approximate, not to scale. floorplansUsketch.com © (ID1068353)

## Information

These particulars are prepared on the basis of information provided by our clients. We have not tested the electrical system or any electrical appliances, nor where applicable, any central heating system. All sizes are recorded by electronic tape measurement to give an indicative, approximate size only. Prospective purchasers should make their own enquiries – no warranty is given or implied. This schedule is not intended to, and does not form any contract.

## FREE Valuation

### Selling Your Home?

Choose first for homes - a highly experienced estate agency team you can trust to sell your home at the highest possible price. Offering fantastic savings on selling fees, with no compromise on service, free professional photography highlighting your home in its best light, first for homes will be your first choice. Contact us today to arrange your appointment.



**first for trust**



**first for service**



**first for aftercare**

**first for homes**  
 first for property in life - firstforhomes.co.uk

Contact Allan England's Team  
**01592 752 944**

32 North Street, Glenrothes, Fife KY7 5NA  
 Fax: 01592 807947  
 sales@firstforhomes.co.uk  
 www.firstforhomes.co.uk