

first for homes

first for property in life - [firstforhomes.co.uk](https://www.firstforhomes.co.uk)

Contact Allan England's Team
01592 752 944



Garvald Way, Glenrothes
Offers over £90,000

Garvald Way, Glenrothes

Lovely Well Presented 3-Bedroom Mid Terraced Villa With Landscaped Gardens To Front & Rear Situated in Glenrothes, Fife!

Allan England's Team at First For Homes are proud to present to the market this Bright and Spacious 3-Bedroom Mid Terraced Villa situated in a popular area of Glenrothes. This bright and spacious family home offers versatile living accommodation for all the family comprising: entrance hallway, lounge, dining room with space for a family sized table & chairs, modern kitchen, stairs to the upper level, 3 generous sized bedrooms - 2 of which have built in wardrobes, family bathroom. Externally there are stunning sunny landscaped garden grounds to the rear and enclosed garden grounds to the front. On street parking. Viewing is highly recommended to fully appreciate what this immaculate family home has to offer! Dont miss out!

Home Report Value- £95,000

EPC Rating- C

Council Tax Band- A

Don't miss out, call first for homes - first for trust... first for service... first for aftercare.

Glenrothes is regarded as one of the most successful Towns in Scotland with a wealth of local amenities including Kingdom Shopping Centre as well as sport and leisure at Michael Woods and a multi-screen cinema. Glenrothes boasts its very own 18-hole Golf course and both Primary and Secondary schooling are available. For the commuter the A92 allows swift access to Edinburgh and there are railway stations at both Thornton and Markinch.

- Lovely Well Presented 3 Bed Terraced Villa
- Popular Area Of Glenrothes, Fife!
- Landscaped Sunny Garden Grounds
- Modern Kitchen
- Stunning Upgraded Family Bathroom
- On Street Parking
- Home Report Value- £95,000
- Council Tax Band- A
- EPC - C
- Early Viewing Is Advised!





SITUATION – Glenrothes

ENTRANCE HALLWAY

LOUNGE

18'6" x 11'8" (approx) (5.66m x 3.57m (approx))

KITCHEN

8'11" x 8'10" (approx) (2.72m x 2.70m (approx))

DINING ROOM

STAIRS TO UPPER LEVEL

BEDROOM 1

11'11" x 9'8" (approx) (3.64m x 2.97m (approx))

BEDROOM 2

12'9" x 8'5" (approx) (3.90m x 2.58m (approx))

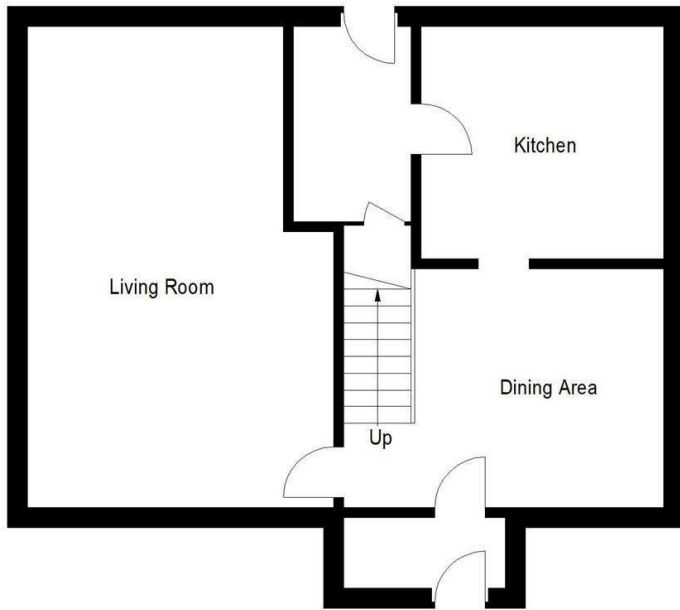
BEDROOM 3

8'10" x 8'1" (approx) (2.71m x 2.48m (approx))

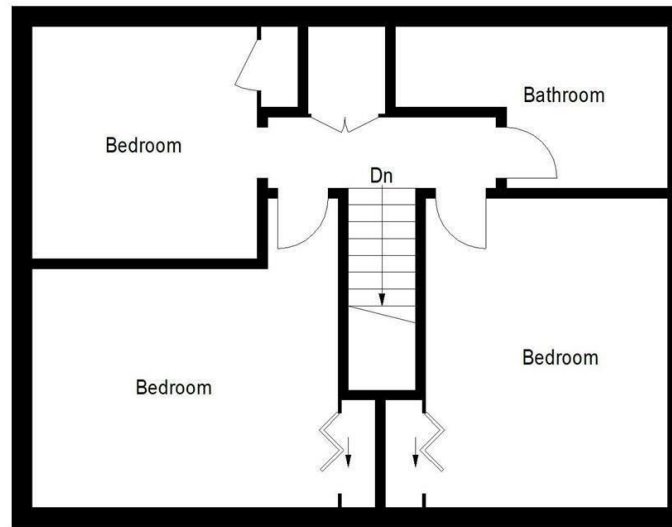
FAMILY BATHROOM

LANDSCAPED GARDENS FRONT & REAR

INFORMATION



Ground Floor



First Floor

Illustration for identification purposes only, measurements are approximate, not to scale. floorplansUsketch.com © (ID430251)

Information

These particulars are prepared on the basis of information provided by our clients. We have not tested the electrical system or any electrical appliances, nor where applicable, any central heating system. All sizes are recorded by electronic tape measurement to give an indicative, approximate size only. Prospective purchasers should make their own enquiries – no warranty is given or implied. This schedule is not intended to, and does not form any contract.

FREE Valuation

Selling Your Home?

Choose first for homes - a highly experienced estate agency team you can trust to sell your home at the highest possible price. Offering fantastic savings on selling fees, with no compromise on service, free professional photography highlighting your home in its best light, first for homes will be your first choice. Contact us today to arrange your appointment.



first for trust



first for service



first for aftercare

first for homes
first for property in life - firstforhomes.co.uk

Contact Allan England's Team
01592 752 944

32 North Street, Glenrothes, Fife KY7 5NA
Fax: 01592 807947
sales@firstforhomes.co.uk
www.firstforhomes.co.uk