

Murray House

Portgower, Sutherland, KW8 6HL



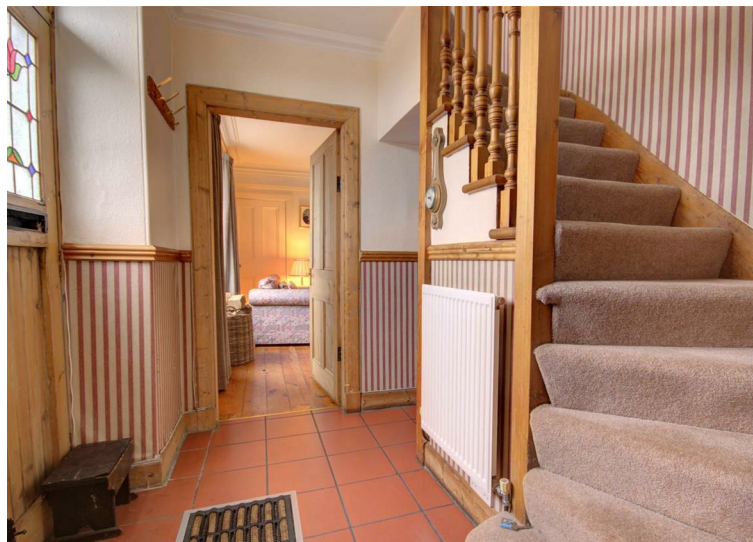
Offers Over £155,000



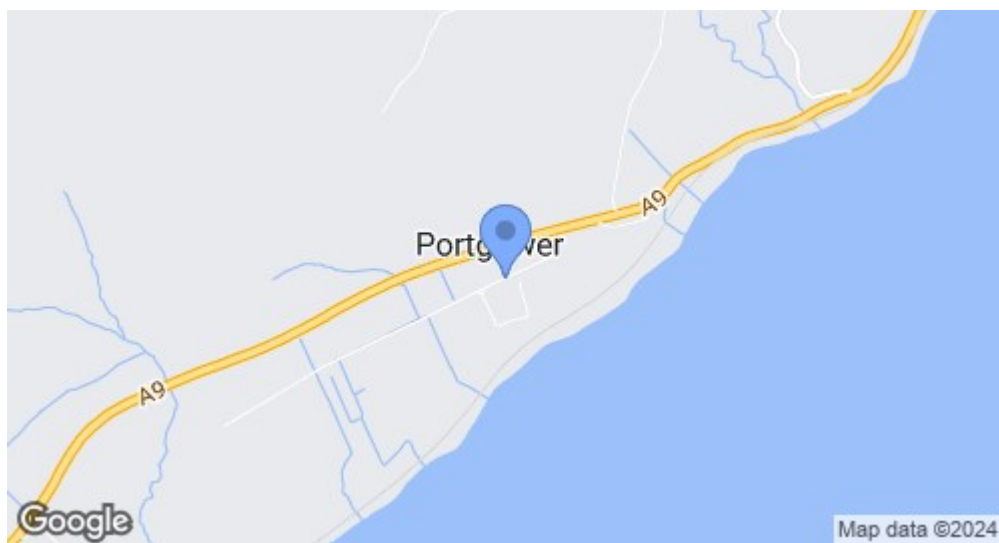
A character cottage over-looking the sea in the hamlet of Portgower along the A9 (NC500 Route). Nestled by the coast just 2 miles south of Helmsdale, Murray House is a 2/3 bedroom stone built 1 3/4 storey cottage with original features. The property overlooks its enclosed garden and then out to the sea.

A garage is accessed from the road and a stone byre is located in the garden and has lots of potential.





- 2/3 Bedroom Stone Built Cottage
- Large Mature Garden
- Sea Views
- Original Period Features



Thistle House, Main Street, Golspie, KW10 6TG
 sales@monster-moves.co.uk
 www.monster-moves.co.uk
 Sutherland - 01408 525001
 Inverness - 01463 263063



monstermoveshighland



monster_moves_estate_agents



HALLWAY

Entry to the cottage is through 2 half doors with stained windows and the name Murray House etched in glass above. Terracotta tiles are on the floor and there is access to the sitting room, living room/bedroom 3 bathroom and pine stairs to the 2 bedrooms.

SITTING ROOM

13'5" x 10'9"

Into the sitting room with its high ceilings and open stone fireplace with a log burner sitting on a brick hearth. Views out to sea. Door leads to the kitchen.

KITCHEN

12'8" x 7'2"

A well fitted kitchen with base and wall units and ample worktop. The room has dual aspect windows and space for a kitchen table and chairs. Integrated appliances are fridge/freezer, oven and hob. Tiled floor.



LIVING ROOM/BEDROOM 3

13'5" x 11'1"

This room has high ceiling, cornice, pine skirting and facings, doors and wood floor. The main feature being the open fireplace with high mantle and cast iron fire with ornamental tiles to the side.

BATHROOM

6'2" x 7'2"

The bathroom has a white bathroom suite with hand held shower tap in the bath. Vinyl on the floor.



UPPER HALLWAY

The pine stairs curve to the first floor and the 2 bedrooms. On the landing is a window looking out to the sea.

BEDROOM 1 with EN SUITE

13'5" x 10'10" (6'2" x 7'2")

A spacious bedroom with 3/4 height coombed ceiling allowing for plenty of head height and one gable wall of fitted wardrobes. A door leads into the en suite with three piece bathroom suite and overhead shower .



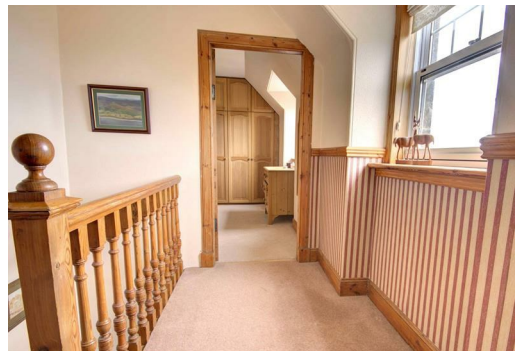
BEDROOM 2

13'5" x 11'1"

A spacious bedroom with 3/4 height coombed ceiling allowing for plenty of head height. The original fireplace is still in situ.

GARDEN & OUTBUILDINGS

The garden is all at the front on the lower terrace and accessed via steps from the parking area and the steps at the side of the garage. Level with the road is a brick garage with wooden door. The garden is mature and has been lovingly tended throughout the years, it is made up of lawn and established borders and a patio area. The stone byre is in need of some repair and has many potential uses.



Thistle House, Main Street, Golspie, KW10 6TG

sales@monster-moves.co.uk

www.monster-moves.co.uk

Sutherland - 01408 525001

Inverness - 01463 263063



monstermoveshighland



monster_moves_estate_agents





ADDITIONAL INFORMATION

Council Tax Band -C

VIRTUAL TOURS

360 Tour - <https://www.madesnappy.co.uk/tour/lgl7lgec22>

Virtual Walkthrough - <https://youtu.be/vZ0EN5DHMIw>



Thistle House, Main Street, Galspie, KW10 6TG

sales@monster-moves.co.uk

www.monster-moves.co.uk

Sutherland - 01408 525001

Inverness - 01463 263063

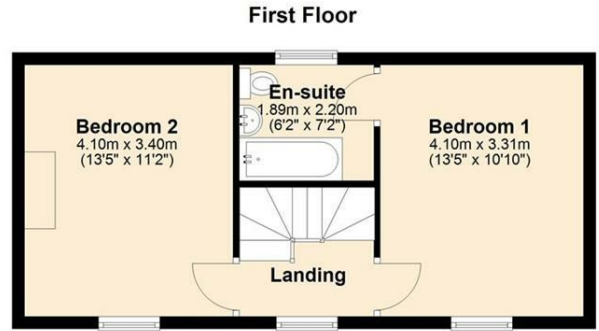
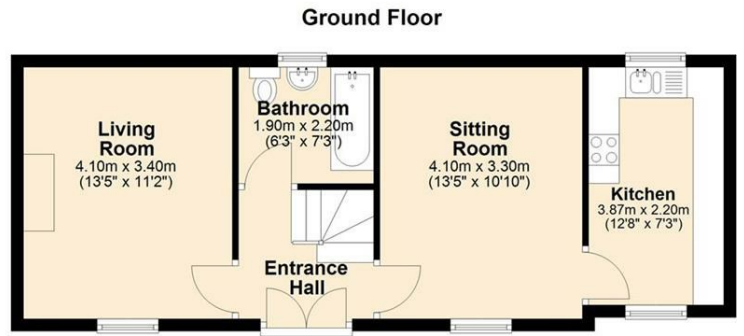


monstermoveshighland



monster_moves_estate_agents





For illustrative purposes only. Produced by Monster Moves Ltd 2024
Plan produced using PlanUp.

Murray House, Portgower



Energy Efficiency Rating		Current	Potential
Very energy efficient - lower running costs			
(92 plus) A			
(81-91) B			
(69-80) C			69
(55-68) D			
(39-54) E			
(21-38) F		12	
(1-20) G			
Not energy efficient - higher running costs			
Scotland		EU Directive 2002/91/EC	

Environmental Impact (CO ₂) Rating		Current	Potential
Very environmentally friendly - lower CO ₂ emissions			
(92 plus) A			
(81-91) B			
(69-80) C			72
(55-68) D			
(39-54) E			
(21-38) F		26	
(1-20) G			
Not environmentally friendly - higher CO ₂ emissions			
Scotland		EU Directive 2002/91/EC	



Thistle House, Main Street, Golspie, KW10 6TG
 sales@monster-moves.co.uk
 www.monster-moves.co.uk
 Sutherland - 01408 525001
 Inverness - 01463 263063



monstermoveshighland



monster_moves_estate_agents





Under the Property Misdescription Act 1991 we endeavour to make our sales details accurate and reliable but they should not be relied upon as statements or representations of fact and they do not constitute any part of an offer of contract. The seller does not make any representations to give a warranty in relation to the property and we have no authority to do so on behalf of the seller. Services, fittings and equipment referred to in the sales details have not been tested (unless otherwise stated) and no warranty can be given as to their condition. We strongly recommend that all the information that we provide about the property is verified by yourself or your advisors. Under the Estate Agency Act 1991 you will be required to give us financial information in order to verify your financial position before we can recommend any offer to the vendor. A sonic tape measure has been used to measure this property and therefore the dimensions given are for general guidance only.

Thistle House, Main Street, Golspie, KW10 6TG

sales@monster-moves.co.uk

www.monster-moves.co.uk

Sutherland - 01408 525001

Inverness - 01463 263063



monstermoveshighland



monster_moves_estate_agents

