



**3, SEAFIELD COTTAGE
LANE, GREENOCK, PA16 7QZ**



neillclerk
ESTATE AGENTS



Description

**** CLOSING DATE FRIDAY 26TH APRIL AT 11AM**** Set within a highly sought after West End development lying off the Esplanade this two bedroom UPPER QUARTER VILLA offers Pedestrian access to the development is available from both the Esplanade and Eldon Street. There is an allocated parking space for one car within the resident's car park which is reached from the Esplanade.

Rear views extend towards the River Clyde. Conveniently situated for local amenities, transport facilities and the waterfront is within level walking distance. Suits a variety of purchasers including downsizers and the first time buyers.

Specification includes: double glazing and gas central heating. The building is protected by a security door entry system. There is a communal lawned rear garden .

Impressive accommodation comprises: Entrance Hallway by timber door with three inbuilt storage cupboards and hatch to the loft. There is a rear facing Lounge with enjoying views to the Esplanade and River Clyde, plus an ornate fireplace with inset electric fire.

The quality refitted dining sized Kitchen features a range of blue toned units, solid beech work surfaces and splashback panelling. Appliances include: stainless steel chimney extractor hood, electric hob, oven and washing machine.

There are two front facing double sized Bedrooms both with fitted mirrored wardrobes. The Shower Room with side window offer a three piece suite comprising: pedestal wash hand basin, wc and shower cubicle with "Triton" shower.

Early inspection recommended for this rare opportunity to purchase a home within a desirable West End development. EPC = C.

Measurements

Hallway

Lounge

4.67m x 3.61m (15'4" x 11'10")

Kitchen

3.63m x 2.36m (11'11" x 7'09")

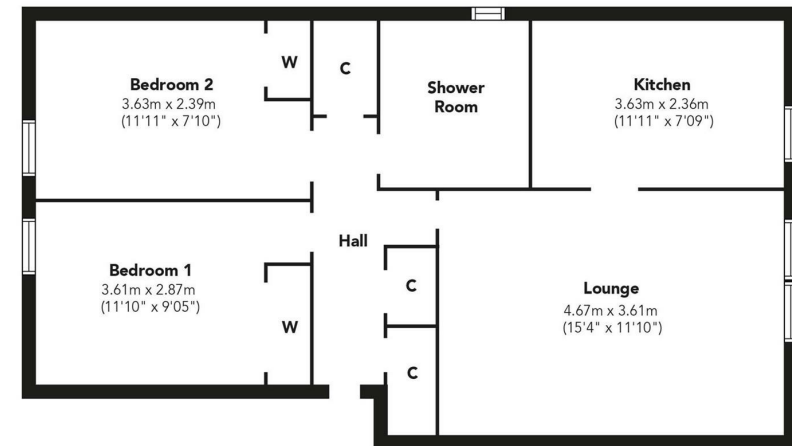
Bedroom 1

3.61m x 2.87m (11'10" x 9'05")

Bedroom 2

3.63m x 2.39m (11'11" x 7'10")

Shower Room



Floorplans are indicative only - not to scale
Produced by Plushplans 









The
next
step..



To view call 01475 888400. Speak to us 7 days a week until 11pm every day to book your viewing appointment.

House to sell or rent?

Call 01475 888400 to book your free market appraisal.

Require a solicitor?

Ask us to supply a free legal quotation from Neill Clerk & Murray, Solicitors.
www.neillclerkmurray.co.uk

Stay fully up-to-date by following Neill Clerk on:



**60 West Blackhall Street
Greenock
Renfrewshire
PA15 1UY**

t: 01475 888400

e: sales@neillclerk.co.uk

w: www.neillclerk.co.uk



Agents Notes:

These sales particulars are set out as a general outline only, issued in good faith, but do not constitute representations of fact and do not form part of any offer or contract. Any services, equipment, appliances, fittings or central heating systems have not been tested and no warranty is given or implied that these are in working order. All measurements are approximate and for guidance only.

Neither Neill Clerk Estate Agents nor any of its employees or agents has any authority to make or give any representation or warranty whatever in relation to this property.

Find all our properties at: [rightmove](#) [Zoopla](#) [onTheMarket.com](#) [s1homes.com](#)