



108 Craighlaw Avenue, Waterfoot

www.nicolestateagents.co.uk



Nicol Estate Agents



Nicol Estate Agents

Situation

Waterfoot is set between the villages of Eaglesham and the high amenity suburb of Clarkston and is located approximately 10 miles from Glasgow City Centre. Commuter routes are served by the M77, M8 and Glasgow Orbital motorways which also provide 30 minute journey times to both Glasgow and Prestwick international airports.

Waterfoot provides semi-rural living with swift access to the neighbouring suburbs of Newton Mearns, Clarkston and the village of Eaglesham.

Newton Mearns and Clarkston are recognised as providing amongst the highest standards of local amenities including healthcare centres, banks and libraries and a broad range of supermarkets, boutique shops and restaurants. Local sports and recreational facilities include Parklands Country Club, David Lloyd Rouken Glen, Bonnyton, Cathcart and Whitecraigs Golf Clubs, a number of private bowling and tennis clubs, and East Renfrewshire Council's own excellent sports and leisure facilities at Eastwood Toll.





Description

A well presented two bedroom mid terraced villa set within this popular residential pocket of Waterfoot.

This family home affords accommodation formed over two levels, well designed for family living.

The complete accommodation comprises:

Ground Floor:

Entrance hallway with staircase to upper floor. Bright and spacious sitting room with feature fireplace. Kitchen, which is fitted with a range of floor standing and wall mounted units and complementary worktops, and affords access to the rear of the property.

First Floor:

Spacious and bright bedroom one, with ample storage space. Bedroom two. House bathroom completes the overall accommodation.

The property is further complemented by gas central heating and double glazing. Well tended gardens, enclosed rear garden with terrace, ideal for entertaining. On street parking provided to the front of the property with a single garage accessed to the rear.



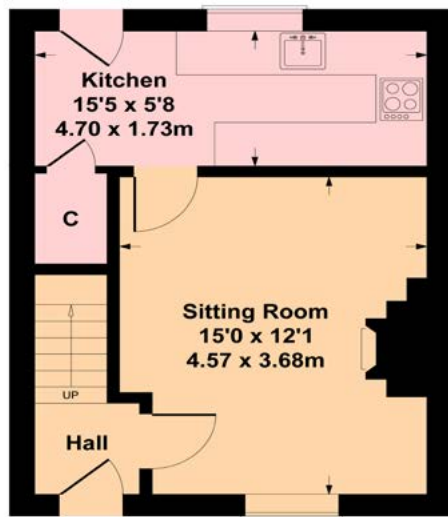


Nicol Estate Agents

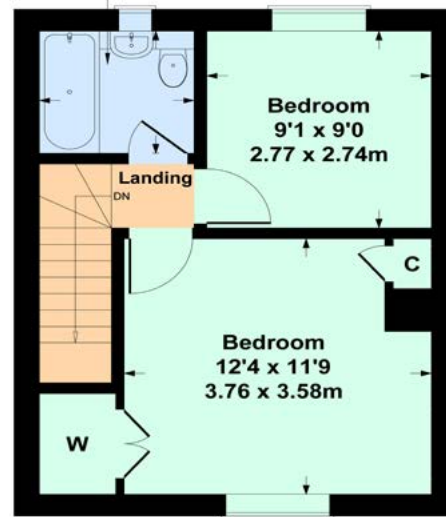


108 Craighlaw Avenue, Waterfoot, G76 0HA

Approximate gross internal area 653 sq ft - 61 sq m



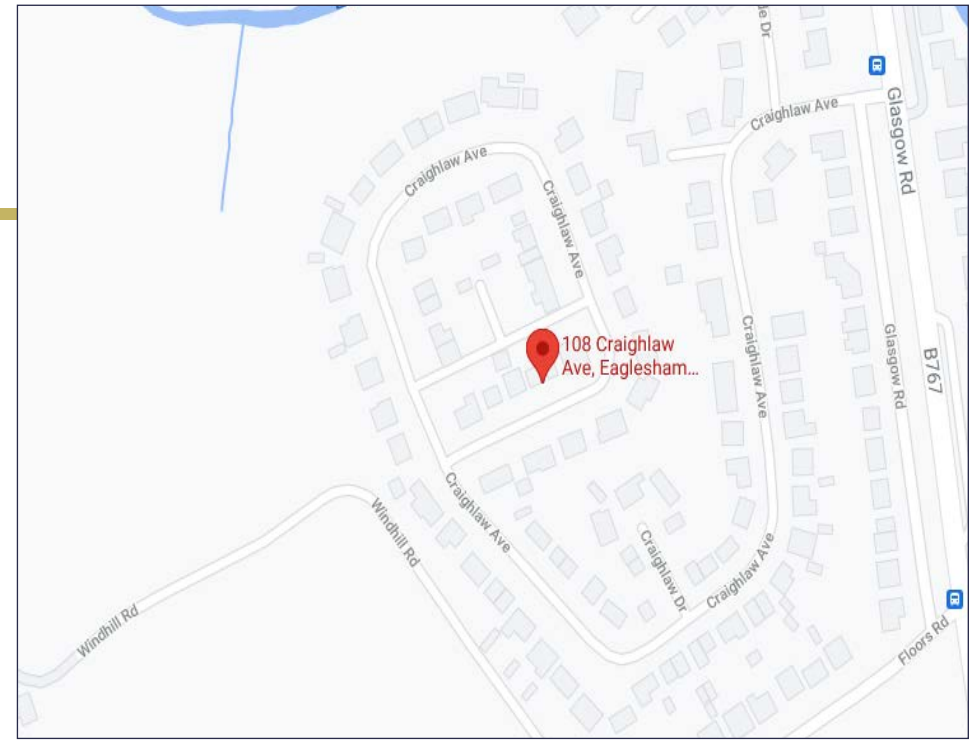
GROUND FLOOR



FIRST FLOOR

SKETCH PLAN FOR ILLUSTRATIVE PURPOSES ONLY

All measurements walls, doors, windows, fittings and appliances, their sizes and locations, are approximate only. They cannot be regarded as being a representation by the seller, nor their agent.



Viewing

By appointment through
Nicol Estate Agents
46 Ayr Road
Newton Mearns, Glasgow G46 6SA
Telephone 0141 616 3960
mail@nicolestateagents.co.uk

Outgoings

East Renfrewshire Council
Council Tax Band: D

Fixtures and Fittings

Only items specifically mentioned in the sale particulars are included in the sale price.

Energy Efficiency Rating

Band D

Services

The property will be supplied by mains water, electricity, gas and drainage.
Gas central heating.

Local Authority

East Renfrewshire Council
Council headquarters
Rouken Glen Road
Giffnock G46 6UG

Property Reference CLA325

We believe these details to be accurate however it is not guaranteed and they do not form any part of a contract. Fixtures and fittings are not included unless specified in the enclosed. Photographs are for general information and it must not be inferred that any item is included for sale with the property. All distances and measurements are approximate. Floorplans may not be to scale and are for illustration purposes only.

46 Ayr Road, Newton Mearns, Glasgow G46 6SA

T: 0141 616 3960 F: 0141 258 2761 E: mail@nicolestateagents.co.uk

www.nicolestateagents.co.uk

