



8 Dundonald Crescent, Newton Mearns

www.nicolestateagents.co.uk



Nicol Estate Agents



Nicol Estate Agents

Situation

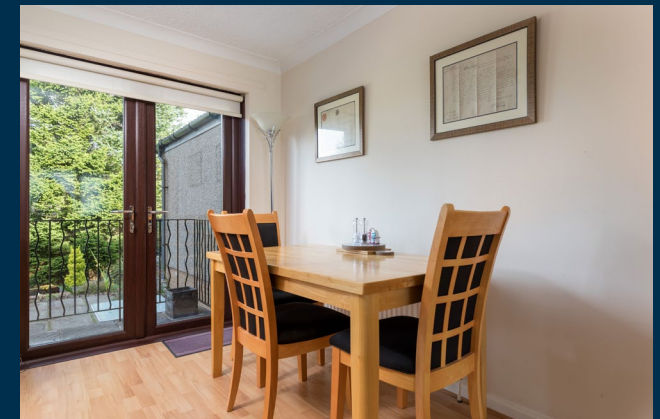
Dundonald Crescent is a continually popular location within Newton Mearns, extremely well positioned for amenities within the surrounding district, close to Mearns Castle High School.

A hugely popular suburb, Newton Mearns is a welcoming, family friendly town, with a fantastic, lively and inclusive community. If you choose to live in Newton Mearns, you will have access to some of Scotland's highest attaining primary and secondary schools, including Kirkhill Primary, St Clare's and Calderwood Lodge Primary Schools, Mearns Castle and St. Ninian's High Schools. Newton Mearns is within easy reach of the private Belmont House School and a number of school-run pick-up points for private schools in Glasgow.

Newton Mearns is located approximately 9 miles from Glasgow City Centre. Commuter routes are served by the M77, M8 and Glasgow Orbital motorways which also provide 30 minute journey times to both Glasgow and Prestwick international airports. There are regular train and bus services to Glasgow, East Kilbride and the beautiful Ayrshire coast.

Recognised as providing amongst the highest standards of local amenities, Newton Mearns offers an array of healthcare centres, banks and libraries and a broad range of supermarkets, boutique shops and restaurants, including The Avenue Shopping Centre and The Greenlaw Retail Park includes Waitrose and Tesco Metro, Broomburn Park and local shops at the Broom.

Local sports and recreational facilities include David Lloyd Rouken Glen, Parklands Country Club, Cathcart, Williamwood and Whitecraigs Golf Clubs, a number of private bowling clubs and Whitecraigs tennis club. As well as East Renfrewshire Council's own excellent sports and leisure facilities at Eastwood Toll. If you are an outdoors lover, Rouken Glen Park, voted Best Park in the UK 2016, is nearby with walking trails through the woods, a great adventure play area, a skate park, five a side football pitches and a boating pond.





Description

A well presented two bedroom semi detached villa, positioned within sought after pocket of Newton Mearns.

Internally the property provides flexible accommodation which is well-proportioned throughout, arranged over two levels. The overall accommodation comprises:

Ground Floor: Entrance hallway. Sitting room. The sitting room is on an open plan arrangement to the dining area/ kitchen with a full complement of wall mounted and floor standing units.

First Floor: Two bedrooms, both benefiting from a fitted wardrobe space. House family bathroom completes the accommodation.

Well kept private gardens, enclosed to the rear with patio area. The property is further complemented by gas central heating and double glazing. A driveway provides off street parking and leads to a tandem garage.



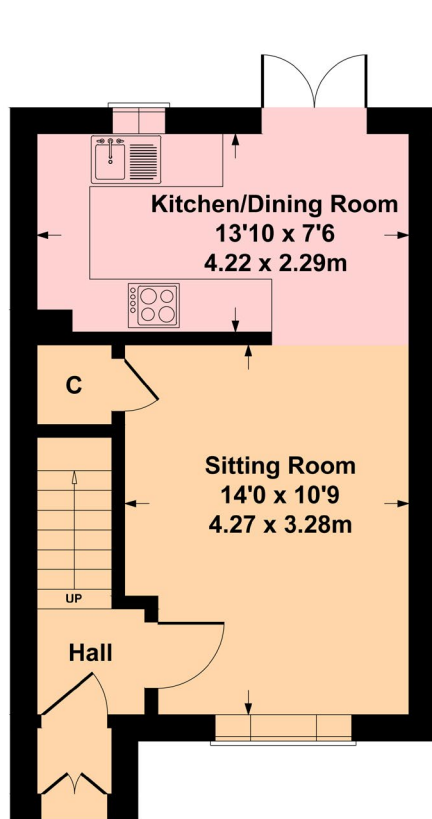


Nicol Estate Agents

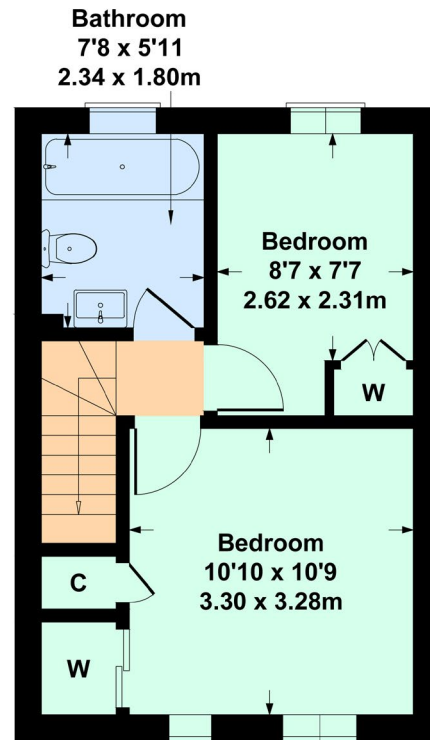


8 Dundonald Crescent, Newton Mearns G77 5TJ

Approximate gross internal area 628 sq ft - 58 sq m



GROUND FLOOR

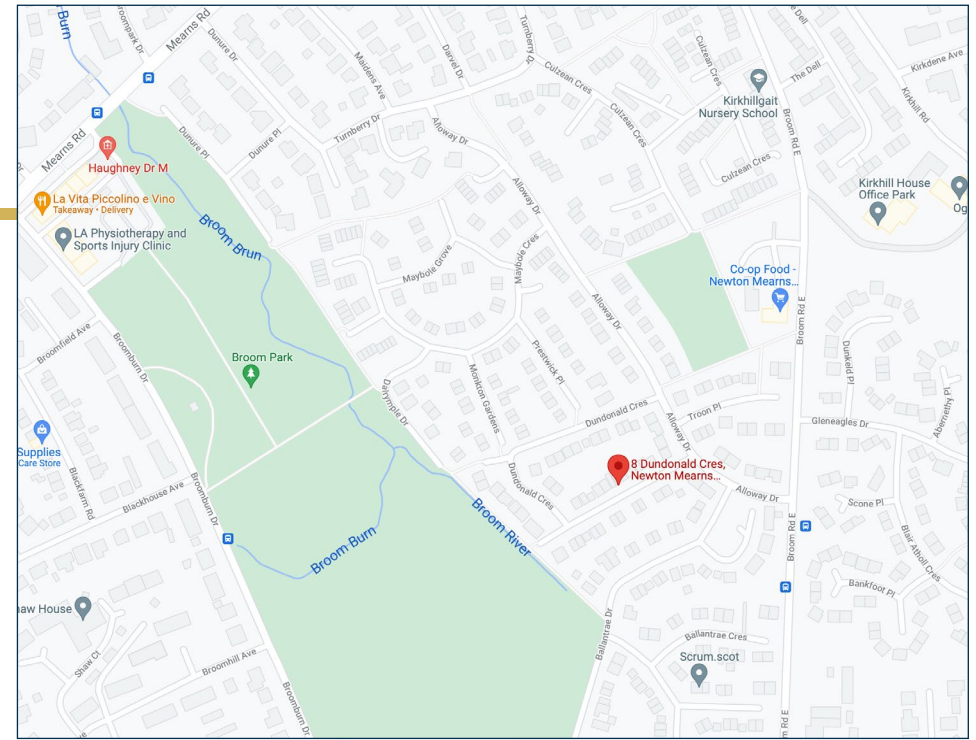


FIRST FLOOR

SKETCH PLAN FOR ILLUSTRATIVE PURPOSES ONLY

All measurements, walls, doors, windows, fitting and appliances, their sizes and locations are approximate only. They cannot be regarded as being a representation by the seller, nor their agent. produced by Potterplans Ltd. 2021

We believe these details to be accurate however it is not guaranteed and they do not form any part of a contract. Fixtures and fittings are not included unless specified in the enclosed. Photographs are for general information and it must not be inferred that any item is included for sale with the property. All distances and measurements are approximate. Floorplans may not be to scale and are for illustration purposes only.



Viewing

By appointment through
Nicol Estate Agents
46 Ayr Road
Newton Mearns, Glasgow G46 6SA
Telephone 0141 616 3960
mail@nicolestateagents.co.uk

Outgoings

East Renfrewshire Council
Band E

Fixtures and Fittings

Only items specifically mentioned in the sale particulars are included in the sale price.

Energy Efficiency Rating

Band

Services

The property will be supplied by mains water, gas and electricity. Gas central heating.

Local Authority

East Renfrewshire Council
Council headquarters
Eastwood Park
Rouken Glen Road
Giffnock
G46 6UG
Tel: (0141) 577 3000

Property Reference 1990

46 Ayr Road, Newton Mearns, Glasgow G46 6SA

T: 0141 616 3960 F: 0141 258 2761 E: mail@nicolestateagents.co.uk

www.nicolestateagents.co.uk

