



 O'MALLEY

 O'MALLEY

26 Old College View
Sauchie, FK10 3FJ

omalleyproperty.com
01259212337



Description

Welcome to Old College View, Sauchie, where charm meets comfort in this delightful two-bedroom mid-terrace house. Located in a quaint neighbourhood, this residence offers a perfect blend of contemporary living and classic charm.

The ground floor features a cosy living room, adorned with warm tones and large windows that fill the space with natural light. The adjoining kitchen is a culinary haven, equipped with modern appliances and ample counter space for preparing delicious meals.

Ascend the staircase to the second floor, where two bedrooms await, each providing a tranquil retreat for rest and relaxation. The master bedroom boasts generous proportions and is complemented by large windows, creating an airy ambiance. The second bedroom is versatile, ideal for accommodating guests, a home office, or a personal hobby space.

The property also includes a well-appointed bathroom, offering both style and convenience.

Outside, the private rear garden provides a peaceful low maintenance oasis, perfect for enjoying al fresco dining or simply unwinding after a busy day.

Don't miss the opportunity to make this charming mid-terrace house in Old College View your home, where comfort, style, and community converge in perfect harmony. Contact our team for a viewing!



“Spacious Property”

Location

Old College View is a sought-after location, offering a friendly community atmosphere while being conveniently situated near local amenities and schools. With easy access to transportation links, shopping centers, and green spaces, this residence combines the tranquility of suburban living with the convenience of urban accessibility.

Living Room

14'0" x 13'8"

Kitchen

14'0" x 8'8"

Bedroom 1

10'7" x 10'2"

Bedroom 2

14'0" x 8'5"

Bathroom

7'5" x 6'5"

W/C

6'4" x 3'8"

Home Report

The home report is available upon request.

Fixtures & Fittings

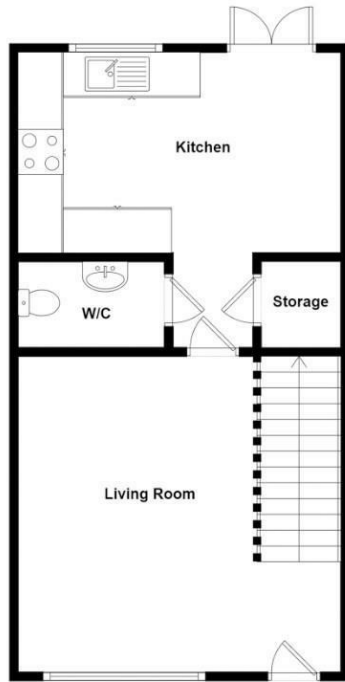
All carpets, floor coverings, light fittings and integrated appliances are included with the sale.



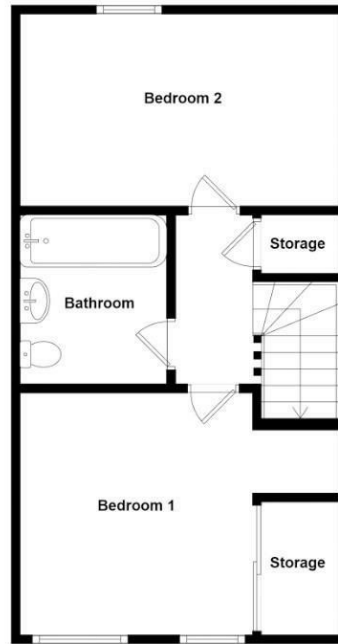
Offers Over £169,995

Viewing 9am - 9pm 7 days a week

Ground Floor



1st Floor



Whilst every attempt has been made to ensure the accuracy of the floorplan contained here, measurements of doors, windows, rooms and any other items are approximate and no responsibility is taken for any error, omission or mis-statement. This plan is for illustrative purposes only and should be used as such by any prospective purchaser. The services, systems and appliances shown have not been tested and no guarantee as to their operability or efficiency can be given.

