



O'MALLEY

O'MALLEY

70 Fairfield
Alloa, FK10 3DD

omalleyproperty.com
01259212337



Description

****CLOSING DATE SET FOR WEDNESDAY 3RD APRIL AT 12 NOON ****

This charming three-bedroom semi-detached house, situated in the serene neighbourhood of Fairfield in Sauchie, offers an inviting and warm ambiance, perfect for families or those looking for a peaceful retreat.

Upon entering, you're greeted by a welcoming hallway that leads to a spacious living room, adorned with large windows that bathe the space in natural light. The heart of this home is undoubtedly its kitchen. It features ample storage space and a generous countertop area, with ample space for free standing appliances. Completing the lower level is the family bathroom, which comprises; a W.C, wash hand basin and bath with overhead shower.

Upstairs, the house boasts three beautifully appointed bedrooms. The master bedroom, with its generous proportions, promises a tranquil haven for rest, while the two additional bedrooms offer flexibility and can easily accommodate children, guests, or be transformed into a home office or study.

Externally, the property does not disappoint. The front garden sets a welcoming tone with its well-maintained appearance and side driveway for multiple vehicles. The extensive rear garden is a mixture of pathed slabs and grass.



“Spacious Property”

Location

Located in Fairfield, Sauchie, the house benefits from its proximity to local amenities, including shops, schools, and parks, making it an ideal setting for family living. The peaceful surroundings and community feel of the area add to the appeal of this property, making it a truly special place to call home.

Living Room

14'1" x 12'9"

Kitchen

16'2" x 8'1"

Bedroom 1

14'11" x 10'1"

Bedroom 2

10'11" x 10'11"

Bedroom 3

10'7" x 7'6"

Bathroom

8'1" x 5'0"

Home Report

The home report is available upon request.



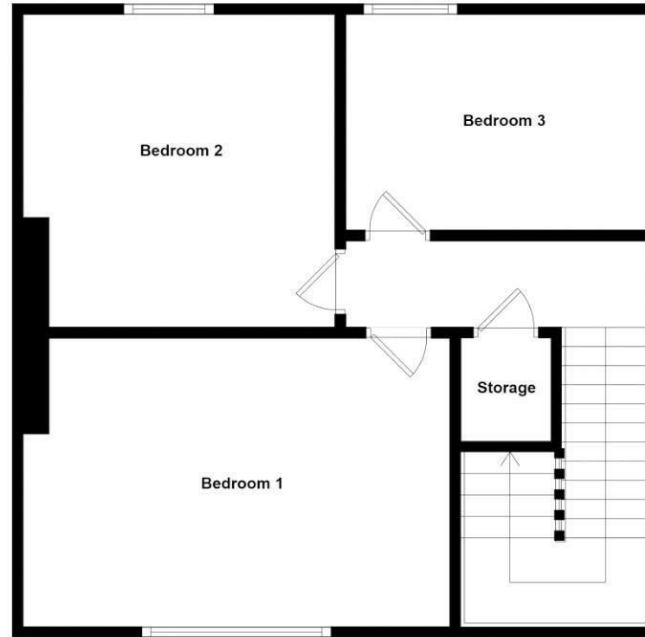
Offers Over £144,995

Viewing 9am - 9pm 7 days a week

Ground Floor



1st Floor



Whilst every attempt has been made to ensure the accuracy of the floorplan contained here, measurements of doors, windows, rooms and any other items are approximate and no responsibility is taken for any error, omission or mis-statement. This plan is for illustrative purposes only and should be used as such by any prospective purchaser. The services, systems and appliances shown have not been tested and no guarantee as to their operability or efficiency can be given.

