



## 8 Campsie Road

, Wishaw, ML2 7QG

**Offers over £63,000**

Internal viewing a must to appreciate this lovely spacious, freshly decorated and newly carpeted upper flat.

The accommodation comprises entrance hall, large bright lounge, modern fitted dining kitchen, 2 double bedrooms and bathroom.

Further benefits include new double glazing, gas central heating, rear garden, garage and driveway. EPC C

- Freshly carpeted and painted throughout
- Great sized modern kitchen
- Excellent location for transport facilities & shops
- Two double bedrooms

### Viewing

Please contact our Pomphreys Properties Ltd Office on 01698373365 if you wish to arrange a viewing appointment for this property or require further information.



2



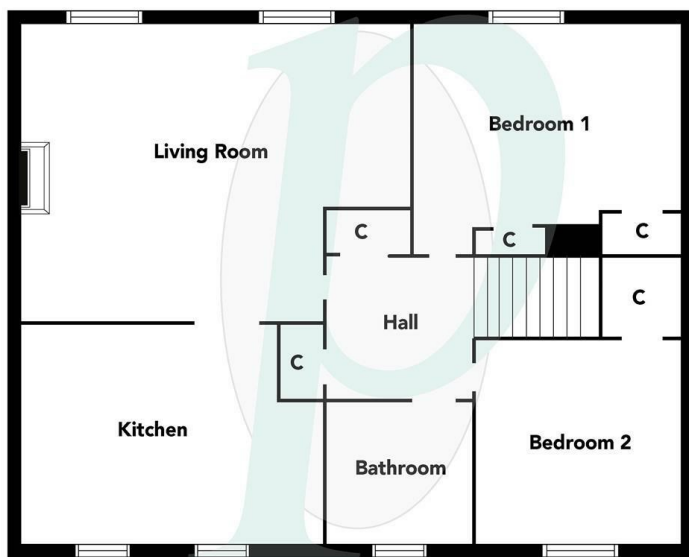
1



1



## Floor Plan



Floorplans are indicative only - not to scale  
Produced by Plush Plans Ltd

## Area Map



## Energy Efficiency Graph



These particulars, whilst believed to be accurate are set out as a general outline only for guidance and do not constitute any part of an offer or contract. Intending purchasers should not rely on them as statements of representation of fact, but must satisfy themselves by inspection or otherwise as to their accuracy. No person in this firms employment has the authority to make or give any representation or warranty in respect of the property.