



124 Waverley Drive

, Wishaw, ML2 7DR

Fixed asking price £70,000

NEW TO THE MARKET!

Freshly decorated and newly carpeted throughout this lovely bright ground floor flat must be internally viewed!

The accommodation comprises entrance hall, large lounge with feature fire, fitted dining kitchen with new integrated oven hob cooker hood and washing machine, 2 double bedrooms and immaculate bathroom.

Further benefits include double glazing, gas central heating, garage, off street parking, private garden and communal garden to rear.

Waverley Drive is situated a few minutes walk from Wishaw Town Centre where all day-to-day requirements can be catered for including all shops, schooling, recreational and leisure pursuits. For the commuter, there are excellent public transport links to Glasgow, Edinburgh and all points beyond.

EPC D.

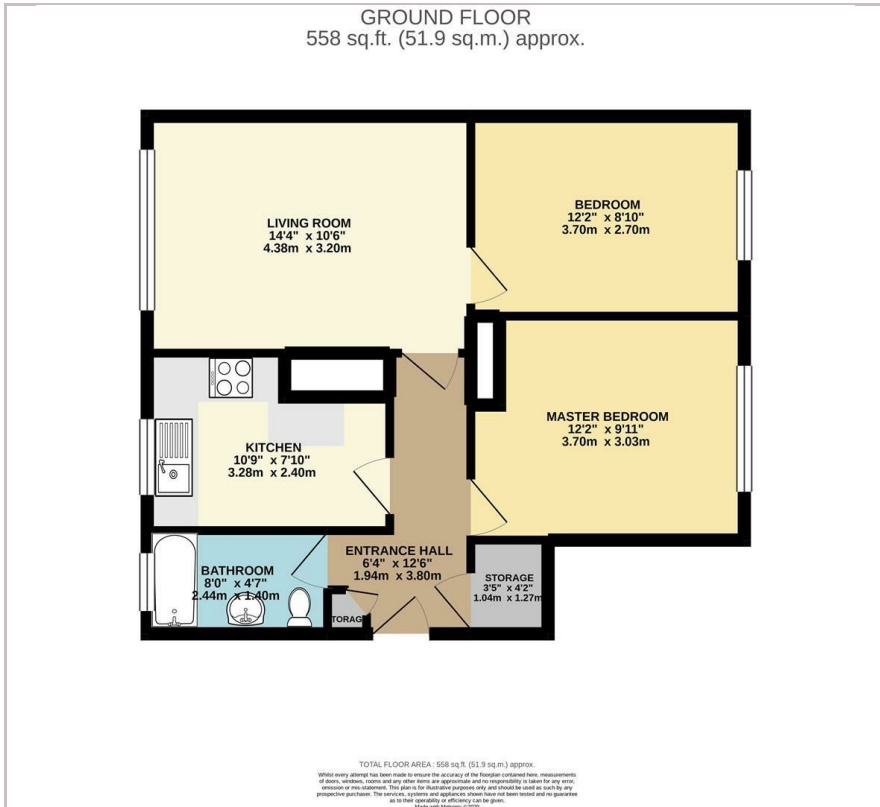
Viewing

Please contact our Pomphreys Properties Ltd Office on 01698373365 if you wish to arrange a viewing appointment for this property or require further information.

- Ground Floor Flat minutes from Town Centre
- Quiet yet central location
- Two Double Bedrooms
- Freshly carpeted and newly decorated
- New Integrated oven hob and cooker hood
- Garage
- Off Road Parking



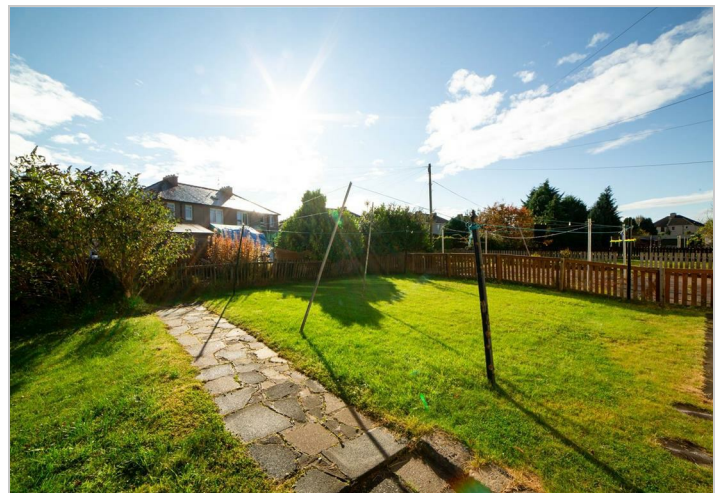
Floor Plan



Area Map



Energy Efficiency Graph



These particulars, whilst believed to be accurate are set out as a general outline only for guidance and do not constitute any part of an offer or contract. Intending purchasers should not rely on them as statements of representation of fact, but must satisfy themselves by inspection or otherwise as to their accuracy. No person in this firm's employment has the authority to make or give any representation or warranty in respect of the property.