



18 Sighthill Terrace

, Salsburgh Shotts, ML7 4NB

Offers over £62,000

NEW TO THE MARKET!

A mid terraced villa requiring a small amount of internal upgrade offering spacious, family sized accommodation with an excellent opportunity for first time purchasers to own their own home.

The accommodation comprises of hallway, spacious lounge, large fitted dining kitchen, two double bedrooms and shower room.

The property has double glazing throughout and an oil central heating system. There are private landscaped garden areas to front and rear..

Salsburgh is ideally situated for commuting to Glasgow, Edinburgh and the central belt via the M8 motorway network.

Viewing

Please contact our Pomphreys Properties Ltd Office on 01698373365 if you wish to arrange a viewing appointment for this property or require further information.

- Two double bedrooms
- In need of internal upgrade



2



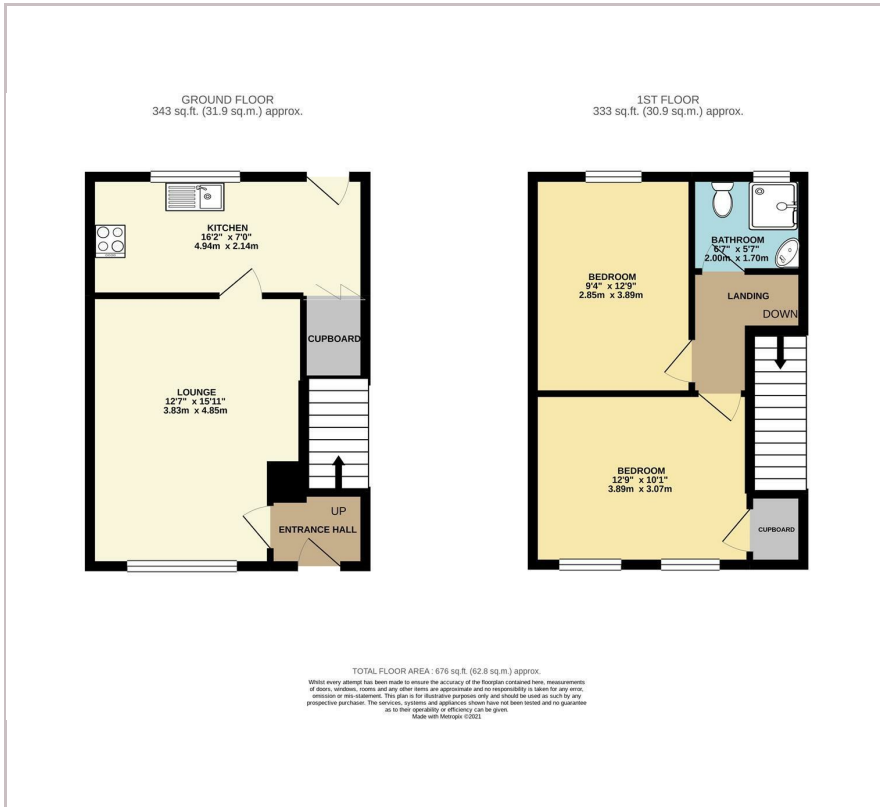
1



1



Floor Plan



Area Map



Energy Efficiency Graph



These particulars, whilst believed to be accurate are set out as a general outline only for guidance and do not constitute any part of an offer or contract. Intending purchasers should not rely on them as statements of representation of fact, but must satisfy themselves by inspection or otherwise as to their accuracy. No person in this firms employment has the authority to make or give any representation or warranty in respect of the property.