



6 Hawthorn Drive

, Motherwell, ML1 4ER

Offers over £71,000

UNEXPECTEDLY BACK ON THE MARKET!!

An extremely spacious upper cottage flat set in a large corner plot within a quiet and popular locale in Carfin, Motherwell.

The generously sized accommodation on offer comprises entrance hallway, bright and spacious lounge with feature fireplace semi open plan to a lovely formal dining room, fitted modern kitchen with ample wall and base units, breakfast bar sitting area and double oven with integrated cooker hood, two good size double bedrooms one benefiting from fitted mirrored wardrobes and an immaculate contemporary family bathroom.

Features of the property include gas central heating and double glazing. Externally the property benefits from an enclosed landscaped rear garden and a large side providing an abundance of off road parking.

Pomphreys Properties highly recommends early internal inspection to fully appreciate the size and standard of accommodation on offer here. This property would make the perfect purchase for first-buyers or investors alike.

Situated in Carfin which has a range of local amenities including primary and nearby secondary schools and shops on the outskirts of Motherwell, which offers a greater variety of shops and recreational facilities. Carfin train station provides regular services to both Glasgow and Edinburgh. The property is ideally situated for commuting throughout the

- Immaculate upper flat
- large corner plot
- 2 double bedrooms
- Lovely bright lounge
- Dining Room
- Modern Kitchen
- Landscaped gardens

Viewing

Please contact our Pomphreys Properties Ltd Office on 01698373365 if you wish to arrange a viewing appointment for this property or require further information.



2



1

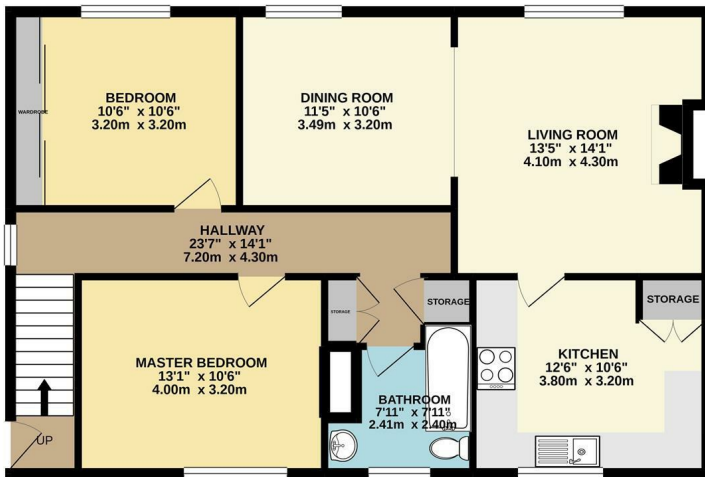


2



Floor Plan

GROUND FLOOR
895 sq.ft. (83.1 sq.m.) approx.



TOTAL FLOOR AREA: 895 sq.ft. (83.1 sq.m.) approx.
 Whilst every attempt has been made to ensure the accuracy of the floorplan contained here, measurements of doors, windows, rooms and any other items are approximate and no responsibility is taken for any error, omission or mis-statement. This plan is for illustrative purposes only and should be used as such by any prospective purchaser. The services, appliances and appliances shown have not been tested and no guarantee is given for their operation or reliability at all times.
 Made with Metropix ©2021

Area Map



Energy Efficiency Graph



These particulars, whilst believed to be accurate are set out as a general outline only for guidance and do not constitute any part of an offer or contract. Intending purchasers should not rely on them as statements of representation of fact, but must satisfy themselves by inspection or otherwise as to their accuracy. No person in this firm's employment has the authority to make or give any representation or warranty in respect of the property.