



30 Patterson Drive

Law, Carlisle, ML8 5LT

Offers over £39,500

NEW TO THE MARKET!

A spacious upper cottage flat situated close to Law Centre, by Carlisle

In need of a slight degree of internal upgrade, the accommodation comprises hallway, large lounge, kitchen, with floor and wall mounted units, 2 good sized bedrooms and shower room.

Further benefiting from double glazing, electric storage and panel heating, driveway, garage and rear garden

The property is located in Law Village and is situated close to the centre which provides access to the necessary amenities for everyday living and ideally located for commuting throughout the central belt with convenient access to motorway networks.

EPC D.

Viewing

Please contact our Pomphreys Properties Ltd Office on 01698373365 if you wish to arrange a viewing appointment for this property or require further information.

- excellent first time buyer or investor opportunity
- Two bedrooms
- Garage
- In need of internal upgrade
- Driveway
- Rear Garden



2



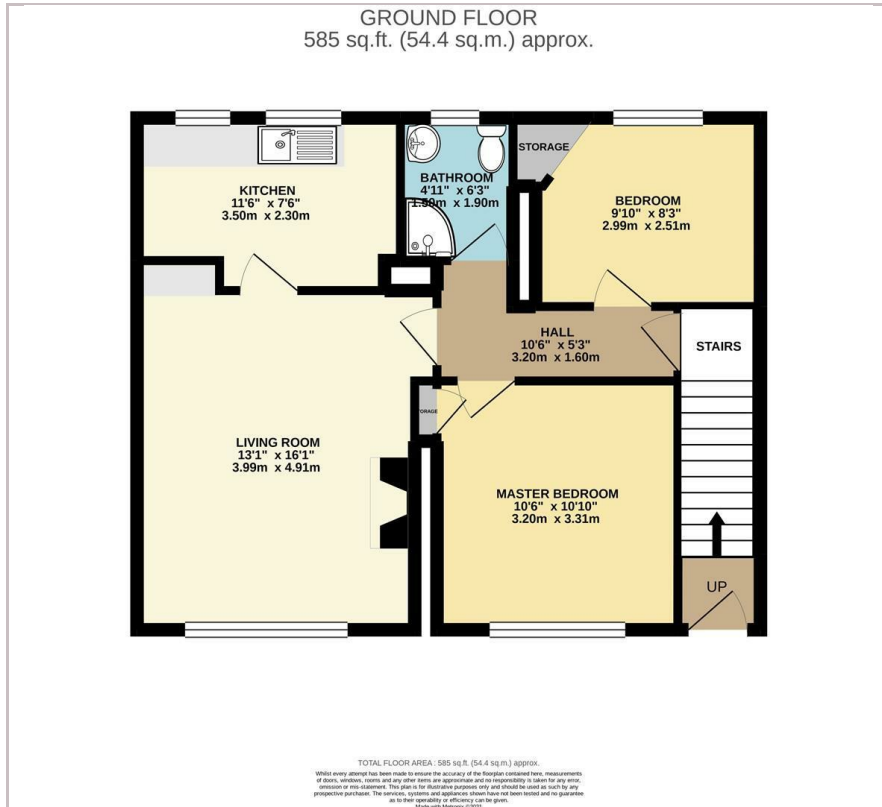
1



1



Floor Plan



Area Map



Energy Efficiency Graph



These particulars, whilst believed to be accurate are set out as a general outline only for guidance and do not constitute any part of an offer or contract. Intending purchasers should not rely on them as statements of representation of fact, but must satisfy themselves by inspection or otherwise as to their accuracy. No person in this firm's employment has the authority to make or give any representation or warranty in respect of the property.