



31 Arden Craig Terrace

, Glasgow, G45 9BJ

Offers over £225,000

Pomphreys Properties are delighted to present to the market this stunning, spacious three bedroom detached villa situated in a popular residential area of Castlemilk in the southside of Glasgow well placed for local amenities and transport links. Early internal viewing is highly advised to appreciate this gorgeous property and will appeal to a wide range of buyers.

The accommodation, on the ground level, comprises a welcoming reception hallway, spacious front facing lounge, great sized fitted modern dining kitchen with integrated appliances of oven hob cooker hood and dishwasher. French Doors offer access and overlook the large private rear garden, utility room and cloakroom/wc.

Upstairs are three bedrooms, master bedroom en suite and all with fitted wardrobes along with the family bathroom.

Gas Central Heating (solar panels), Double Glazing, security alarm and camera system

Externally, the property benefits from a landscaped lawn rear garden, enclosed and private. To the side is a monobloc driveway. A fully insulated shed with power is also found to the side of the home, currently being used as an office and store.

Arden Craig Terrace is located within the popular residential area of Castlemilk which offers local shops and eateries nearby. It also offers primary and secondary schooling at John Paul II and Miller Primaries and St Margaret Mary's and

- Three Bedrooms (Master en suite)
- Stunning Dining Kitchen with appliances
- Utility Room
- Landscaped enclosed rear garden
- Monoblocked Driveway to side
- Double Glazing
- Gas Central Heating
- Outbuilding, fully insulated with power

Viewing

Please contact our Pomphreys Properties Ltd Office on 01698373365 if you wish to arrange a viewing appointment for this property or require further information.



3



3

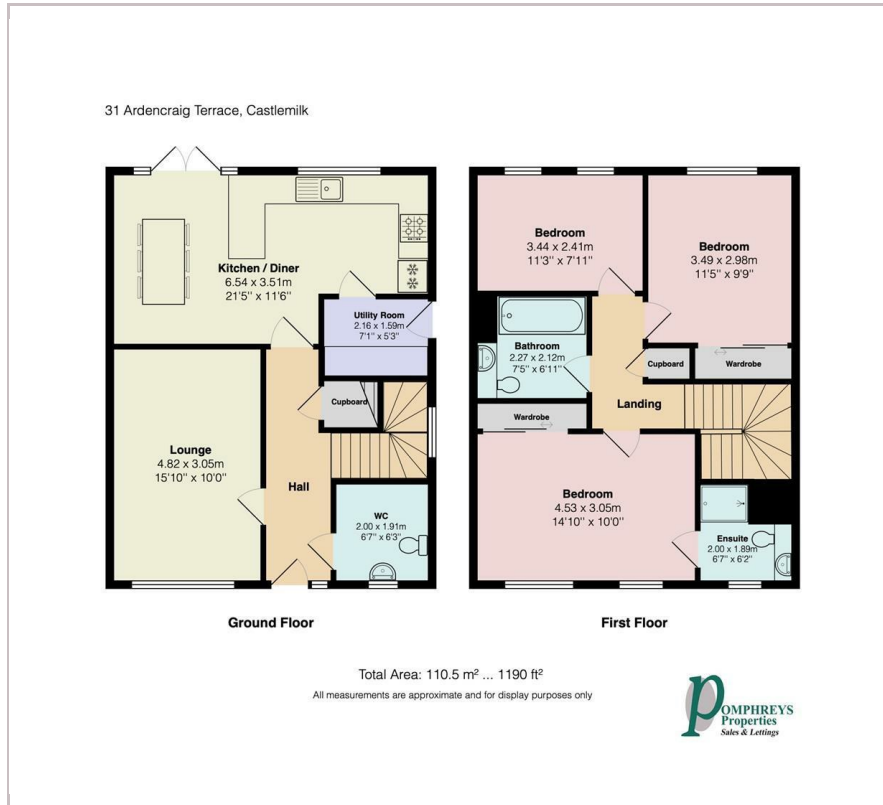


1

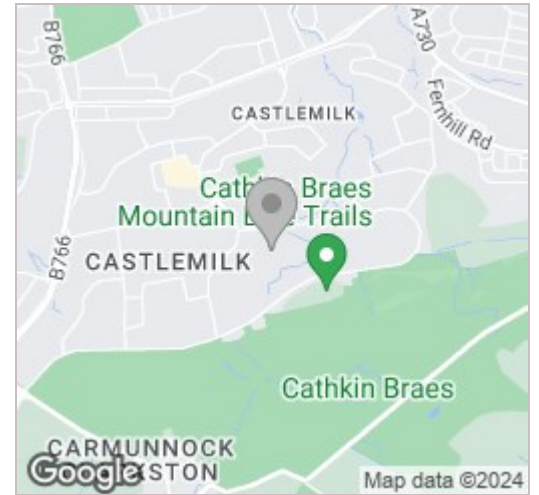


1

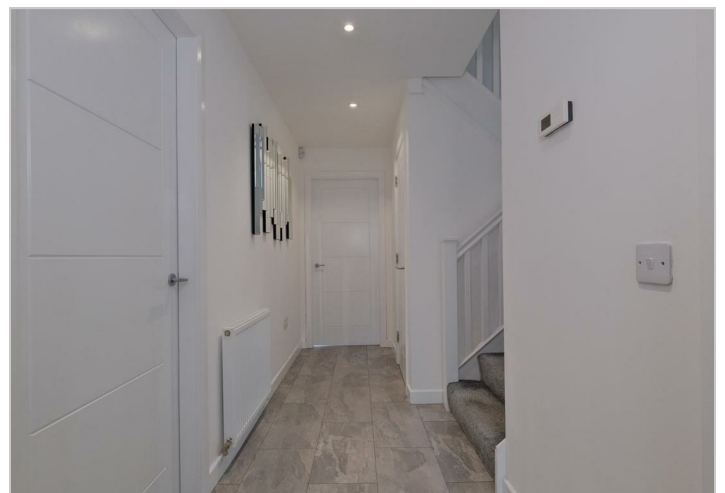
Floor Plan



Area Map



Energy Efficiency Graph



These particulars, whilst believed to be accurate are set out as a general outline only for guidance and do not constitute any part of an offer or contract. Intending purchasers should not rely on them as statements of representation of fact, but must satisfy themselves by inspection or otherwise as to their accuracy. No person in this firm's employment has the authority to make or give any representation or warranty in respect of the property.