



RESIDENCE

10 Eaglesfield Crescent, Strathaven, ML10 6HY

www.residencestateagents.co.uk



Viewing by appointment with Residence Strathaven

T: 01357 572222 | E: strathaven@residenceestateagents.co.uk | A: 3 Bridge Street, Strathaven, ML10 6AN



RESIDENCE



5 Bedrooms | 2 Public Rooms | 2 Bathrooms



This versatile and deceptively spacious 5 bedroomed chalet style detached villa offers an array of spacious apartments and features and excellent sized tandem style garage.

The accommodation comprises; entrance vestibule with access to a reception hallway, formal lounge with aspects to front, open plan kitchen and dining room with a range of base and wall mounted storage units, worktops and space for appliances. There is a useful home office, 2 double bedrooms and a family bathroom on the ground floor level whilst on the upper floor there is a large storage cupboard housing the boiler and an additional 3 double bedrooms of which the master has its own walk-in closet and there is a separate and further family bathroom. Features of the property include gas central heating, double glazing, established garden grounds, driveway and tandem garage.

Early viewing is recommended in order to appreciate the size of accommodation on offer.



Eaglesfield Crescent is a highly regarded and desirable residential address within the area. Strathaven is a market town located south of East Kilbride and Hamilton. Catchment areas for excellent primary schools and the highly rated Strathaven Academy. The area offers excellent shopping facilities & sports facilities including swimming baths, bowling clubs, golf courses, public parks and country walks. Strathaven has a typical market Town community, a wide variety of shops within the town centre including restaurants, pubs, cafes and a large Sainsbury's.

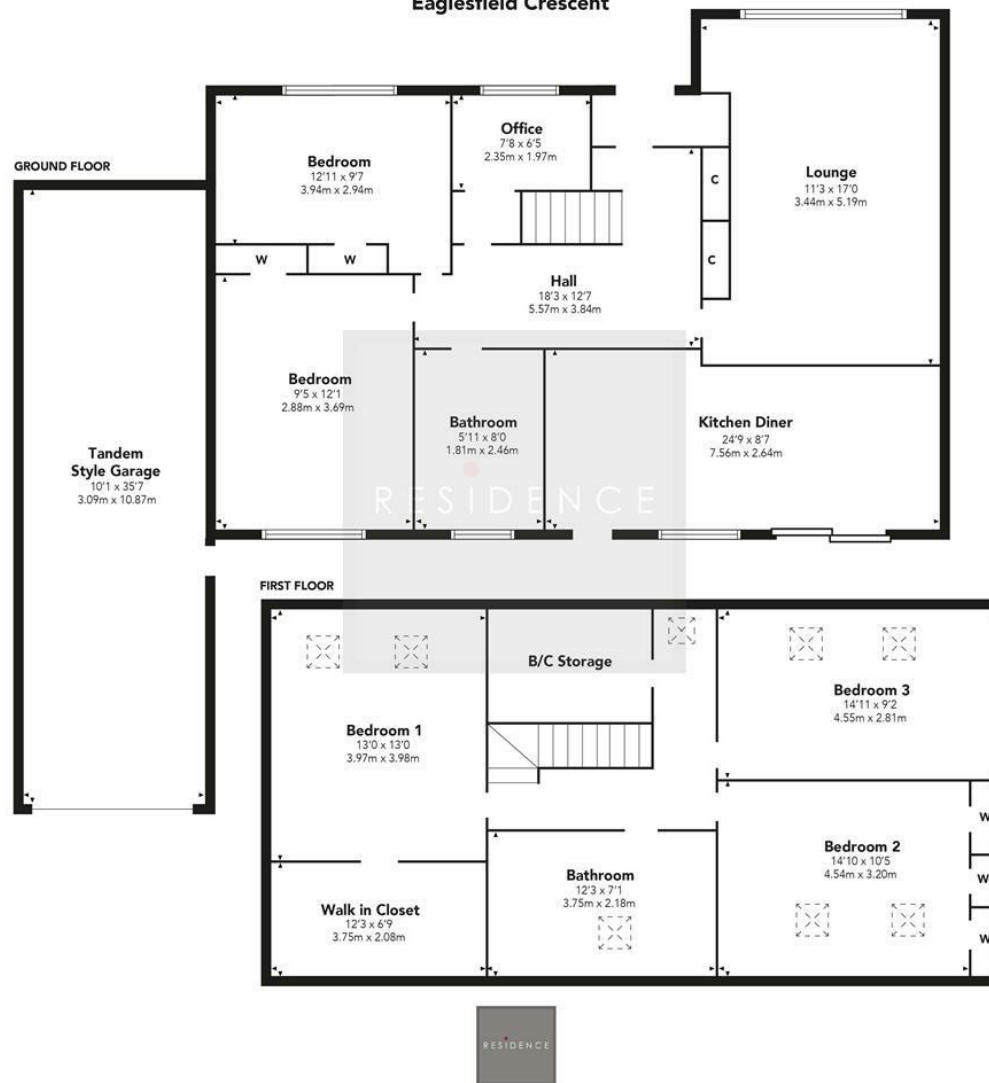
1722.00 sq ft | EER = D



RESIDENCE



Eaglesfield Crescent



Floor Plan measurements are approximate and are for illustrative purposes only. While we do not doubt the floor plans accuracy, we make no guarantee, warranty or representation as to the accuracy and completeness of the floor plan. You or your advisors should conduct a careful, independent investigation of the property to determine to your satisfaction as to the suitability of the property for your space requirements.

Produced by Plush Plans Ltd

We believe these details to be accurate; however, they do not form any part of a contract. Fixtures and fittings are not included unless specified in the enclosed. Photographs are for general information and it must not be inferred that any item is included for sale with the property. All distances and measurements are approximate. Floorplans may not be to scale and are for illustration purposes only.