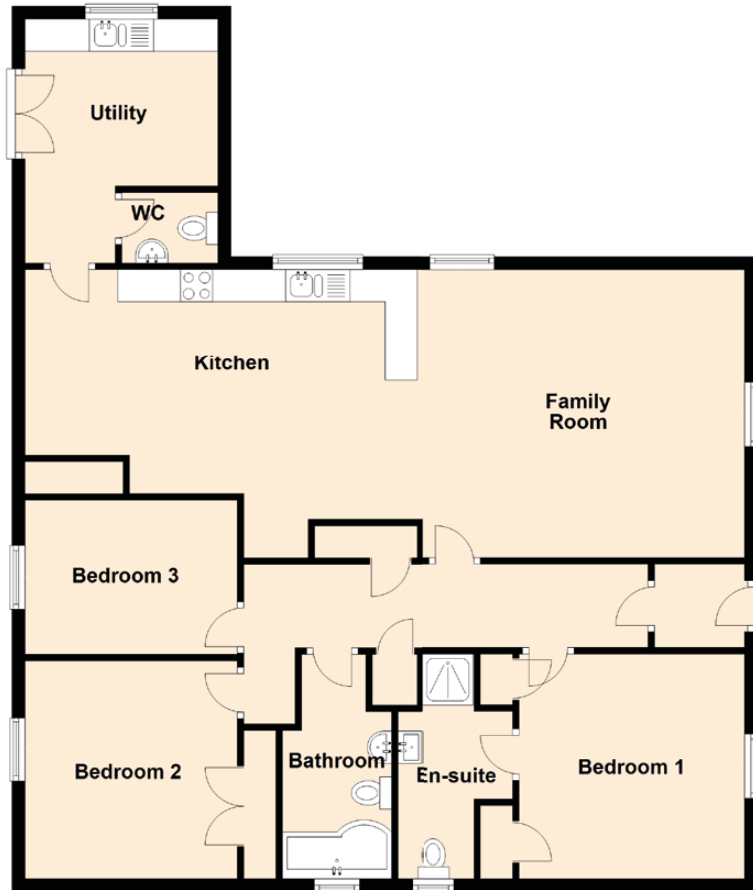


2 Bridgend

FORGLEN, TURRIFF, ABERDEENSHIRE, AB53 4LX



Approximate Dimensions (Taken from the widest point)

Family Room	5.00m (16'5") x 4.50m (14'9")
Kitchen	6.10m (20') x 3.80m (12'6")
Utility	3.00m (9'10") x 2.60m (8'6")
Bedroom 1	3.50m (11'6") x 3.50m (11'6")
En-suite	3.50m (11'6") x 1.80m (5'11")
Bedroom 2	3.40m (11'2") x 3.30m (10'10")
Bedroom 3	3.30m (10'10") x 2.40m (7'10")
Bathroom	3.50m (11'6") x 1.70m (5'7")
WC	1.50m (4'11") x 1.10m (3'7")