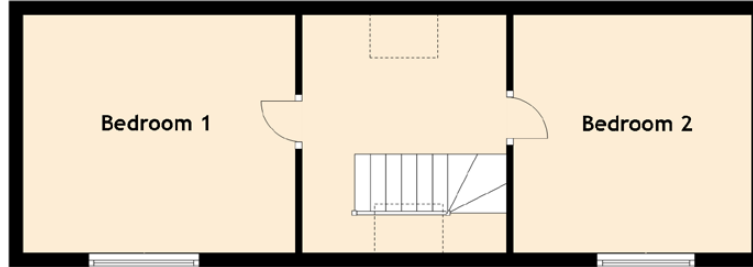


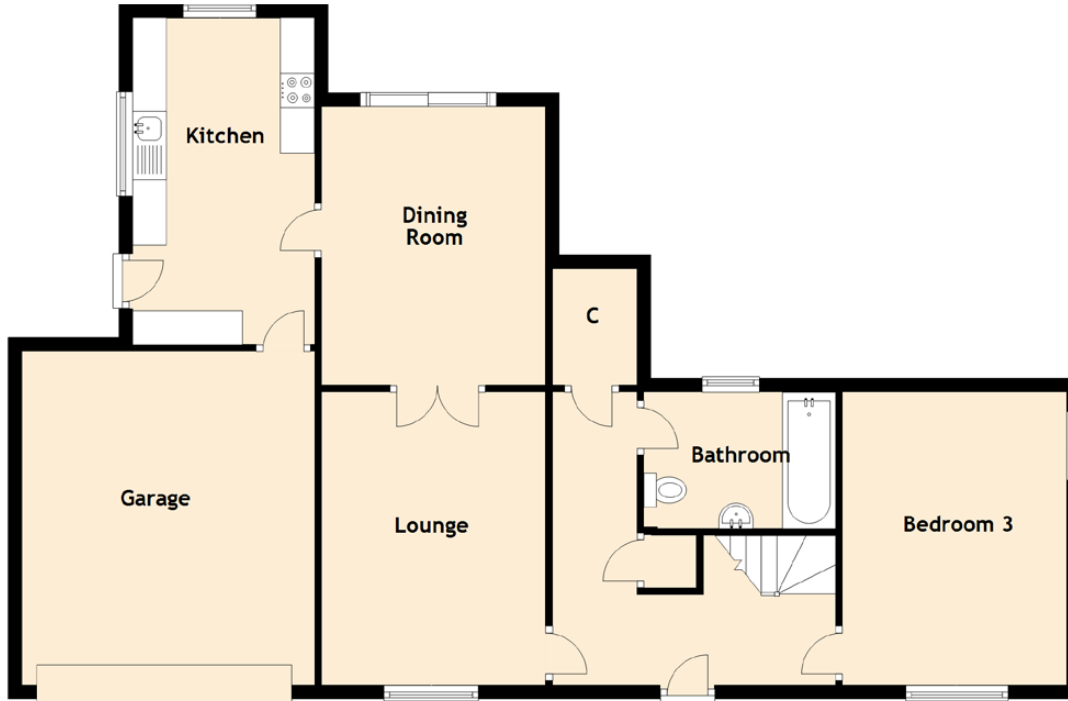
# 4 Cross Street

PORTGORDON, BUCKIE, AB56 5QW



Approximate Dimensions (Taken from the widest point)

Lounge	4.20m (13'9") x 3.30m (10'10")
Dining Room	4.10m (13'5") x 3.50m (11'6")
Kitchen	4.80m (15'9") x 2.50m (8'2")
Bedroom 1	4.00m (13'1") x 3.50m (11'6")
Bedroom 2	3.50m (11'6") x 3.50m (11'6")
Bedroom 3	4.30m (14'1") x 3.30m (10'10")
Bathroom	2.80m (9'2") x 2.00m (6'7")
Garage	4.90m (16'1") x 4.30m (14'1")



Gross internal floor area (m<sup>2</sup>): 114m<sup>2</sup> | EPC Rating: E