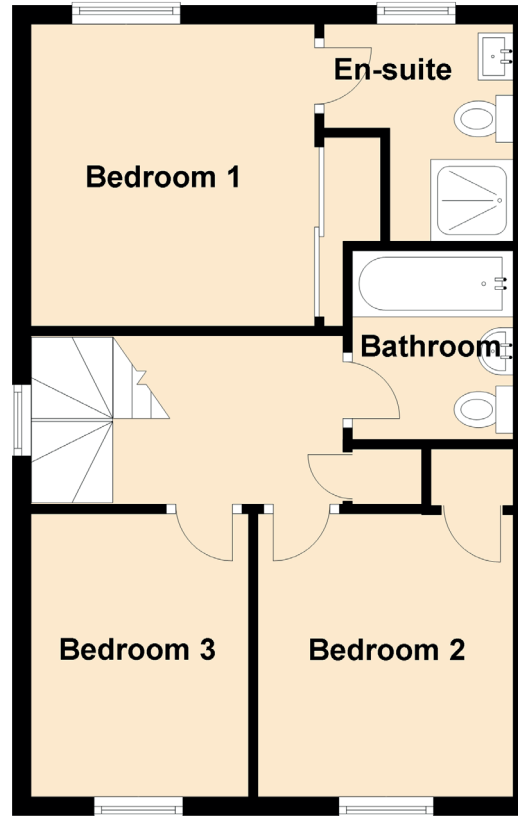
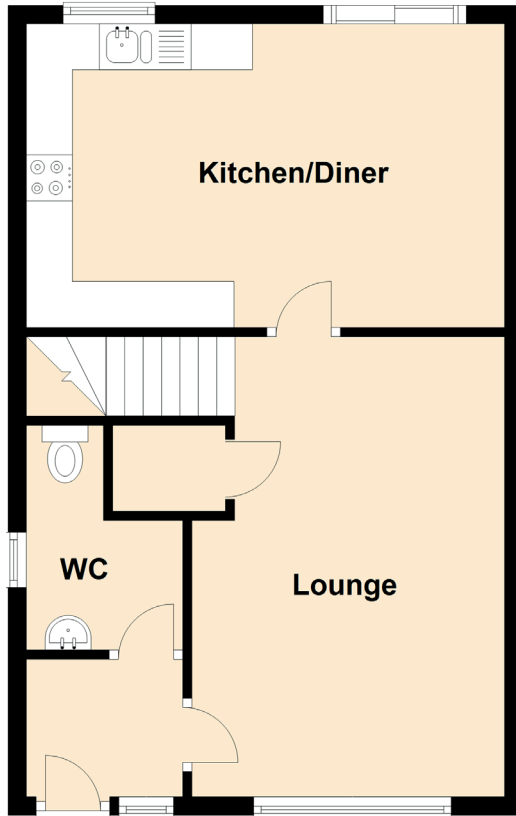


27a Wards Drive

MUIR OF ORD, HIGHLAND, IV6 7PX



APPROXIMATE DIMENSIONS
(TAKEN FROM THE WIDEST POINT)

Kitchen/Diner	5.20m (17'1") x 3.30m (10'10")
Lounge	5.00m (16'5") x 3.40m (11'2")
Bedroom 1	3.20m (10'6") x 3.00m (9'10")
Bedroom 2	3.00m (9'10") x 2.70m (8'10")
Bedroom 3	3.00m (9'10") x 2.30m (7'7")
Bathroom	2.00m (6'7") x 1.70m (5'7")
En-suite	2.30m (7'7") x 2.00m (6'7")
WC	2.40m (7'10") x 1.70m (5'7")