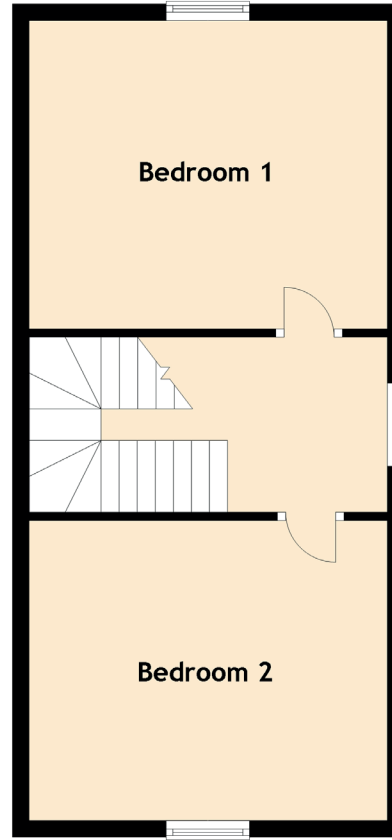
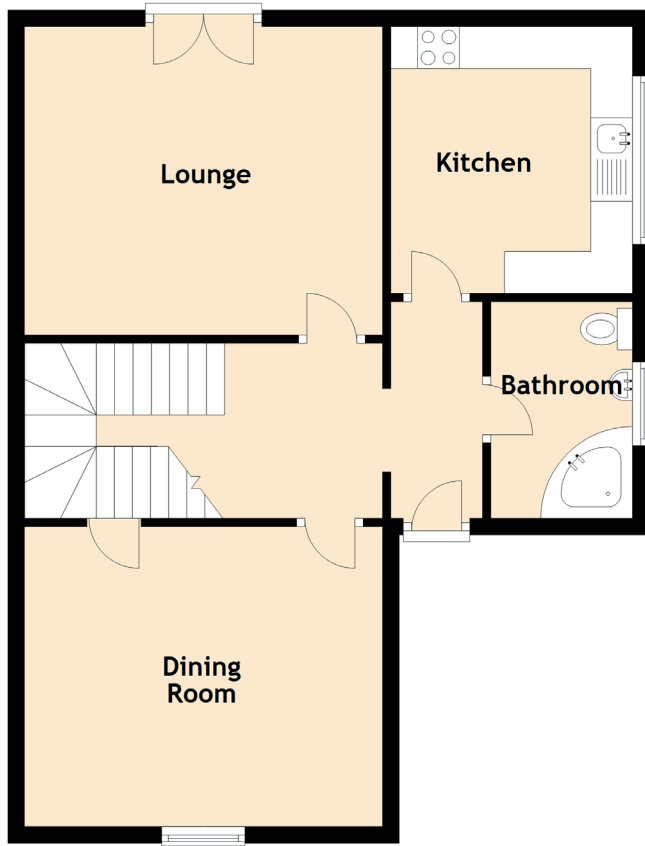


5 Manse Lane

TANNADICE, FORFAR, DD8 3TA



Approximate Dimensions
(Taken from the widest point)

Lounge	4.30m (14'1") x 3.70m (12'2")
Dining Room	4.30m (14'1") x 3.60m (11'10")
Kitchen	3.20m (10'6") x 2.90m (9'6")
Bedroom 1	4.30m (14'1") x 3.60m (11'10")
Bedroom 2	4.30m (14'1") x 3.60m (11'10")
Bathroom	2.60m (8'6") x 1.70m (5'7")