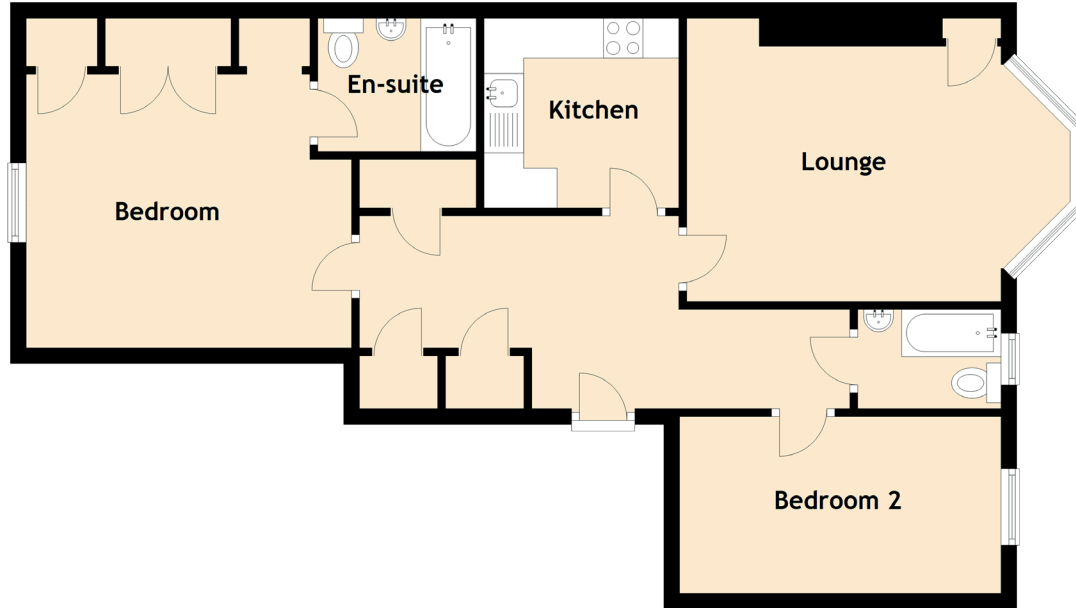


Specifications

FLOOR PLAN, DIMENSIONS & MAP



Approximate Dimensions
(Taken from the widest point)

Lounge	5.72m (18'9") x 3.57m (11'9")
Kitchen	2.46m (8'1") x 2.39m (7'10")
Bedroom 1	4.11m (13'6") x 3.45m (11'4")
En-suite	2.00m (6'7") x 1.68m (5'6")
Bedroom 2	4.06m (13'4") x 2.23m (7'4")

Gross internal floor area (m²): 70m²

EPC Rating: D

