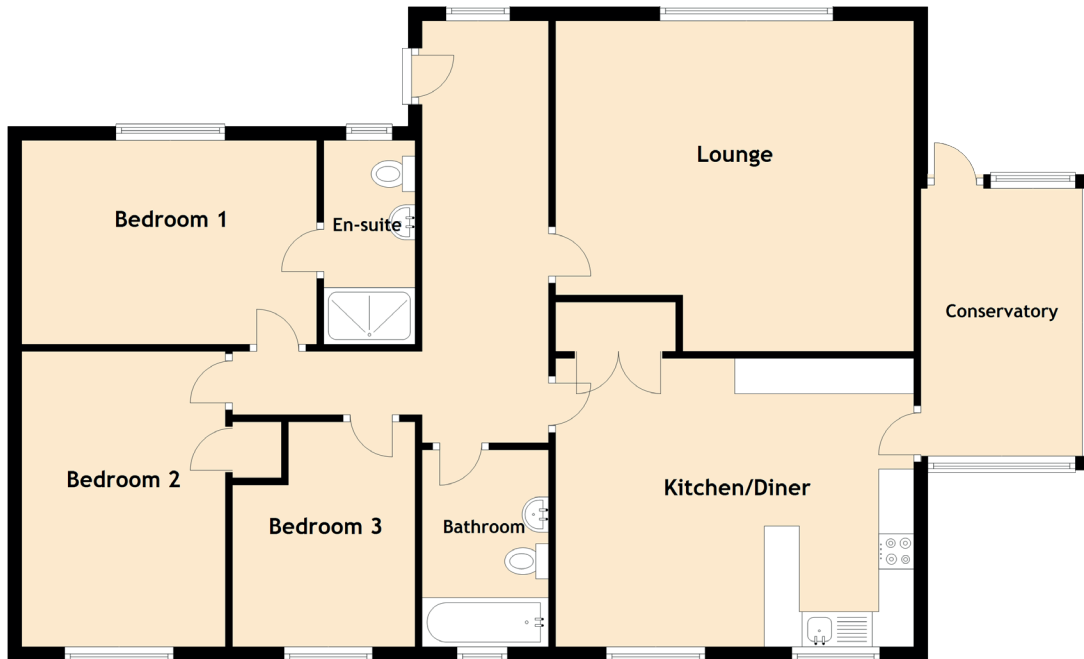


# 1 Bothwell Terrace

PITMEDDEN, ABERDEENSHIRE, AB41 7PT



Approximate Dimensions  
(Taken from the widest point)

Lounge	5.30m (17'5") x 4.70m (15'5")
Kitchen/Diner	5.10m (16'9") x 4.10m (13'5")
Conservatory	3.60m (11'10") x 2.30m (7'7")
Bedroom 1	4.20m (13'9") x 2.90m (9'6")
Bedroom 2	4.20m (13'9") x 2.90m (9'6")
Bedroom 3	3.20m (10'6") x 2.60m (8'6")
Bathroom	2.80m (9'2") x 1.80m (5'11")
En-suite	2.90m (9'6") x 1.30m (4'3")