

142 High Street

LESLIE, FIFE, KY6 3DB



Approximate Dimensions (Taken from the widest point)

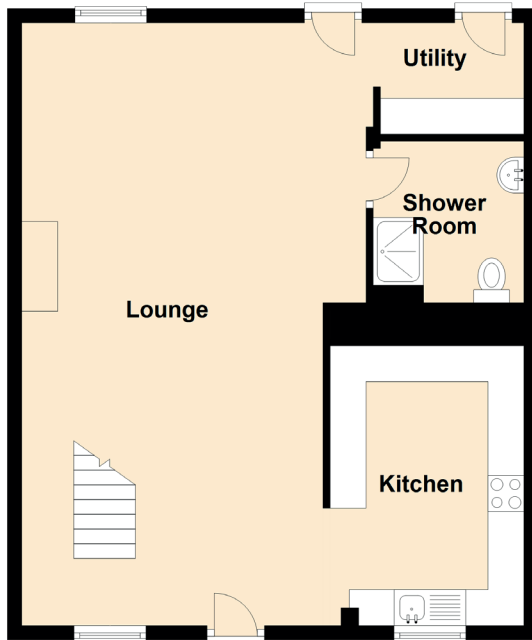
Flat

Lounge	4.70m (15'5") x 4.10m (13'5")
Kitchen	3.30m (10'10") x 3.30m (10'10")
Bedroom 3	4.10m (13'5") x 2.45m (8')
Bedroom 2	3.10m (10'2") x 3.00m (9'10")
Bedroom 1	4.10m (13'5") x 2.75m (9')
Bathroom	2.20m (7'3") x 1.80m (5'11")

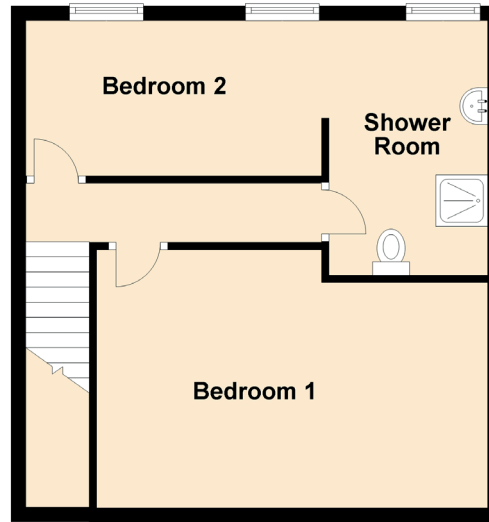
142a High Street

LESLIE, FIFE, KY6 3DB

Ground Floor



First Floor



Approximate Dimensions (Taken from the widest point)

Lounge	8.40m (27'7") x 4.80m (15'9")
Kitchen	3.90m (12'10") x 2.70m (8'10")
Utility	2.00m (6'7") x 1.55m (5'1")
Shower Room	2.25m (7'5") x 2.10m (6'11")
Upper Shower Room	3.45m (11'4") x 2.15m (7'1")