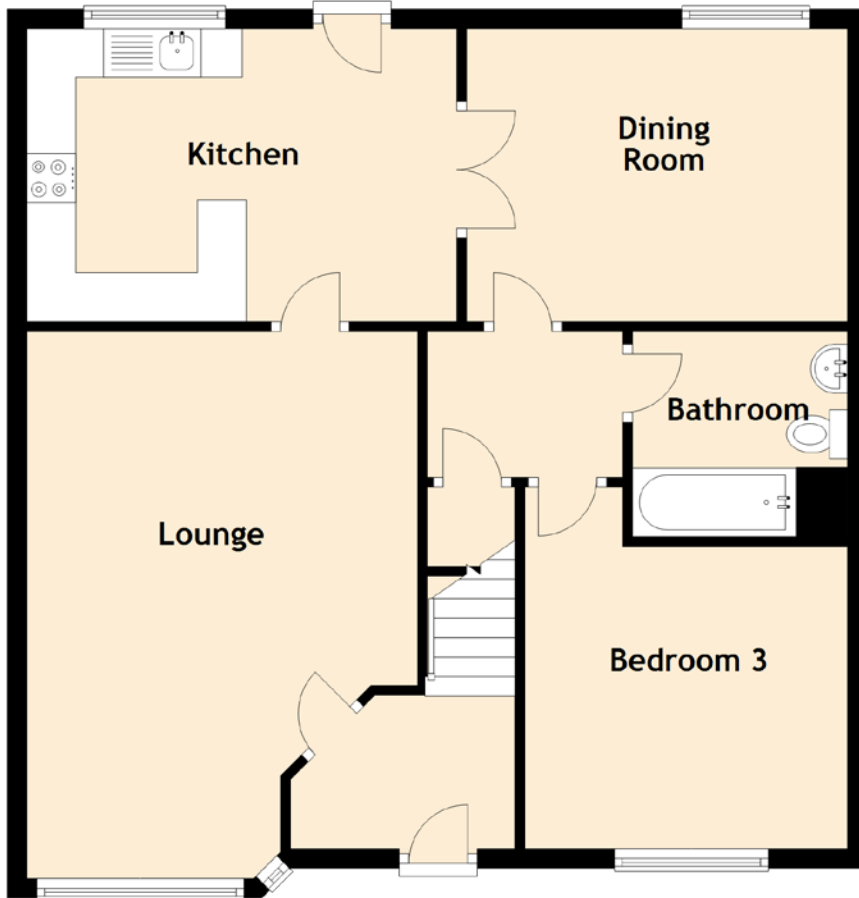


72 Ballumbie Drive

DUNDEE, ANGUS, DD4 0NP



Approximate Dimensions
(Taken from the widest point)

| | |
|-------------|--------------------------------|
| Lounge | 5.60m (18'4") x 4.00m (13'1") |
| Dining Room | 3.90m (12'10") x 3.00m (9'10") |
| Kitchen | 4.40m (14'5") x 3.00m (9'10") |
| Bedroom 1 | 4.10m (13'5") x 2.89m (9'6") |
| En-suite | 2.50m (8'2") x 0.90m (2'11") |
| Bedroom 2 | 4.20m (13'9") x 3.30m (10'10") |
| Bedroom 3 | 3.70m (12'2") x 3.30m (10'10") |
| Bathroom | 2.20m (7'3") x 2.10m (6'11") |

