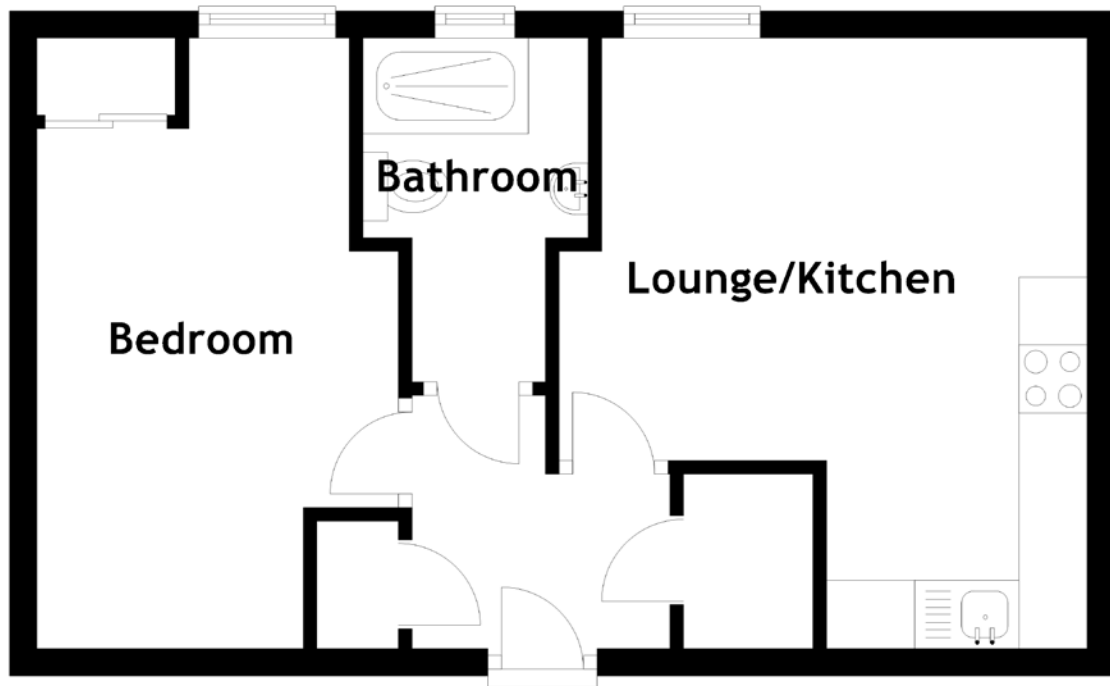


FLOOR PLAN, DIMENSIONS & MAP



Approximate Dimensions (Taken from the widest point)	Bedroom	4.47m (14'8") x 2.65m (8'8")
Lounge/Kitchen	4.19m (13'9") x 3.87m (12'8")	Gross internal floor area (m ²): 32m ²
Bathroom	2.35m (7'9") x 1.65m (5'5")	EPC Rating: D

