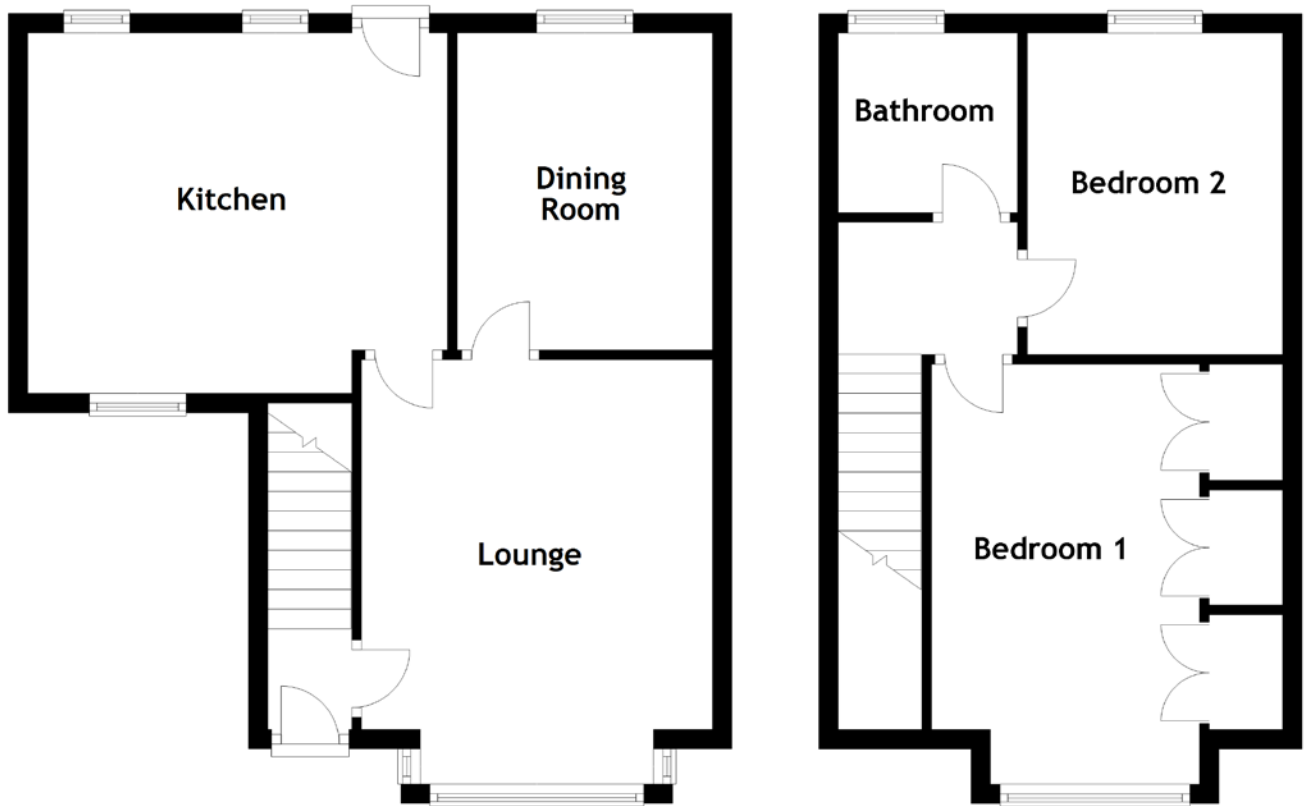


# FLOOR PLAN, DIMENSIONS & MAP



Approximate Dimensions  
(Taken from the widest point)

Lounge 4.39m (14'5") x 3.63m (11'11")  
Kitchen 4.34m (14'3") x 3.73m (12'3")  
Bedroom 1 4.50m (14'9") x 2.77m (9'1")

Bedroom 2 3.33m (10'11") x 2.64m (8'8")  
Bedroom 3/Dining Room 3.28m (10'9") x 2.64m (8'8")  
Bathroom 1.86m (6'1") x 1.86m (6'1")

Gross internal floor area (m<sup>2</sup>): 75m<sup>2</sup>  
EPC Rating: C

